



# The Broadway, Nantwich, CW5 6JH

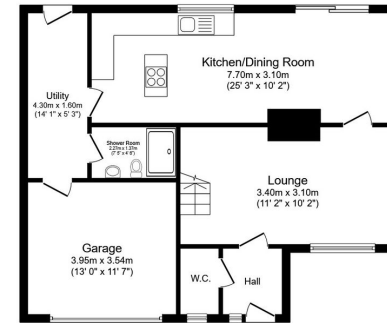
Offers Over £450,000

🛏️ 4 🚿 2 🚗 1

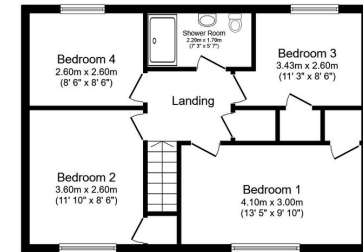


- Detached family home in a highly desirable Nantwich location
- Extended dining kitchen with open plan living area
- Family bathroom
- Double garage and driveway for a number of cars
- Quiet street within walking distance of Nantwich Town Centre
- Well proportioned living room
- Four good sized bedrooms
- Utility and downstairs shower room
- Enclosed rear garden ideal for entertaining and family life
- Close to excellent local schools and local amenities





**Ground Floor**  
Floor area 73.4 sq.m. (790 sq.ft.)



**First Floor**  
Floor area 55.0 sq.m. (592 sq.ft.)

**Total floor area: 128.4 sq.m. (1,382 sq.ft.)**

This floor plan is for illustrative purposes only. It is not drawn to scale. Any measurements, floor areas (including any total floor area), openings and orientations are approximate. No details are guaranteed, they cannot be relied upon for any purpose and do not form any part of any agreement. No liability is taken for any error, omission or misstatement. A party must rely upon its own inspection(s). Powered by www.Propertybox.io

## LW006

A beautifully proportioned detached family home on one of Nantwich's most desirable streets. Offering spacious and versatile accommodation including large lounge, extended dining kitchen with space for sofa and sitting area, utility and shower room. Four good sized bedrooms and a family bathroom, double garage, a private driveway, and an enclosed rear garden, 55 The Broadway combines comfort and convenience in a sought-after location close to schools, amenities, and transport links.

Score	Energy rating	Current	Potential
92+	A		
81-91	B		83 B
69-80	C	70 C	
55-68	D		
39-54	E		
21-38	F		
1-20	G		