



8 Peterson Drive, New Waltham, North East Lincolnshire, DN36 4LF
£210,000

Key Features:

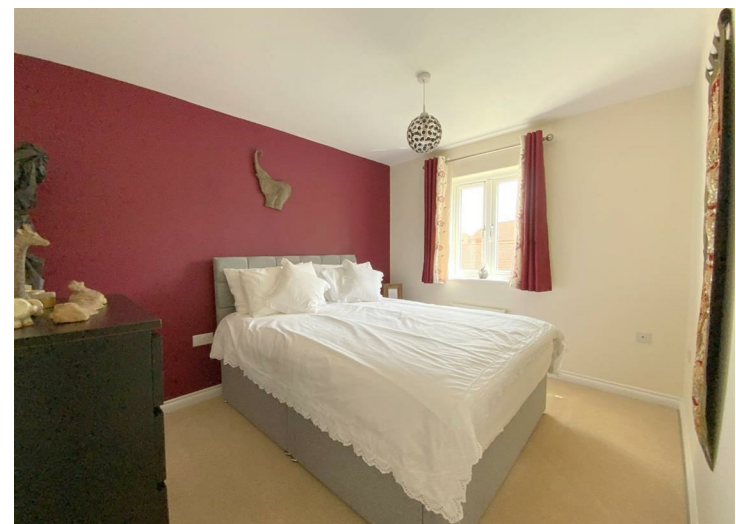
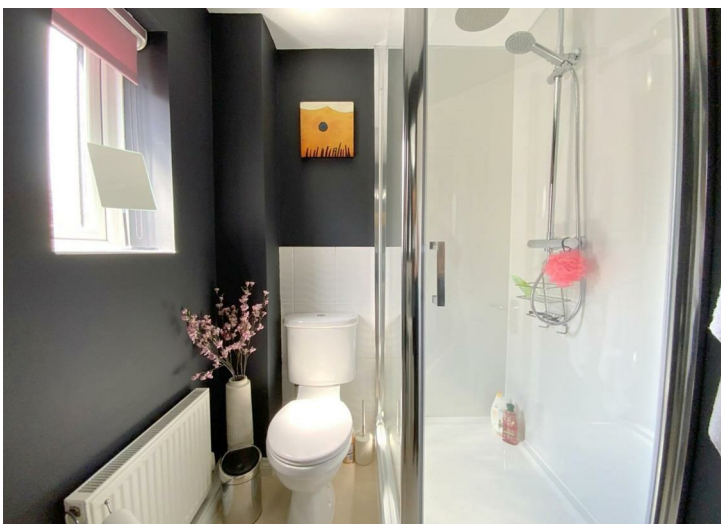
- Attractive Three Bedroom End Link Property
- Highly Regarded Village Location
- Spacious Rear Aspect Lounge
- Modern Dining Kitchen
- Ground Floor Cloak/WC
- En Suite Shower Room & Family Bathroom
- Charming Cottage Style Garden
- Car Port to the Rear

Situated within the highly regarded Renaissance development, off Humberston Avenue, this attractive gable fronted end link home offers stylish and well-planned accommodation, complemented by a beautifully maintained rear garden.

The property features a spacious rear aspect lounge with French doors opening onto the garden, creating a bright and welcoming living space. The modern dining kitchen is well appointed with a range of shaker style units and integrated appliances including an oven/microwave, induction hob and dishwasher, while a useful ground floor cloak/WC adds further practicality.

To the first floor are three bedrooms, with the main bedroom benefiting from an en-suite shower room. A second double bedroom and a versatile third bedroom are served by a family bathroom, complete with both a bath and separate shower enclosure.

The rear garden is a particular feature of the property, thoughtfully designed in a cottage style with a shaped lawn, well stocked beds and borders, and a patio seating area. A door from the garden gives access to the rear carport, providing sheltered off-road parking.



LOUNGE

18'6" x 11'9" (5.64 x 3.60)

DINING KITCHEN

15'8" x 10'10" (4.79 x 3.32)

CLOAKROOM/WC

7'0" x 3'2" (2.14 x 0.98)

FIRST FLOOR**BEDROOM 1**

12'10" x 9'10" (3.92 x 3.02)

EN-SUITE

7'2" x 5'4" (2.19 x 1.63)

BEDROOM 2

11'1" x 9'1" (3.38 x 2.78)

BEDROOM 3

9'5" x 9'1" (2.88 x 2.78)

BATHROOM

8'9" x 6'6" (2.67 x 2.00)

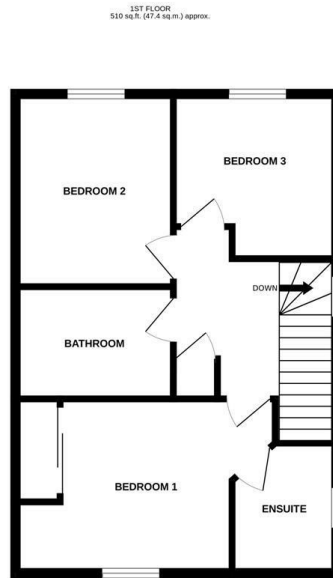
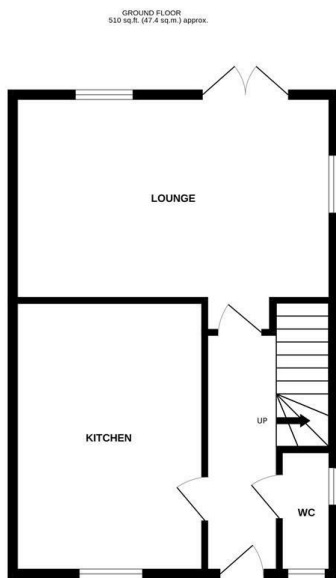
TENURE

Freehold

COUNCIL TAX BAND

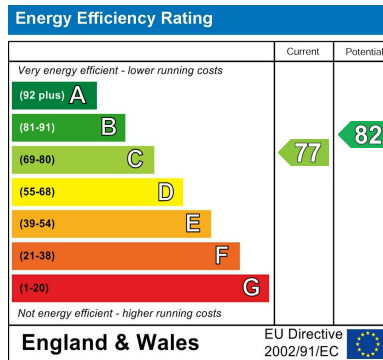
C





TOTAL FLOOR AREA : 1170 sq.ft. (108.7 sq.m.) approx.

Whilst every attempt has been made to ensure the accuracy of the floorplan contained here, measurements of doors, windows, rooms and any other items are approximate and no responsibility is taken for any error, omission or mis-statement. This plan is for illustrative purposes only and should be used as such by any prospective purchaser. The services, systems and appliances shown have not been tested and no guarantee as to their operability or efficiency can be given.
Made with Metropix ©2020



Viewing

By appointment only.

Tenure

We are advised by the vendor that the property is: As Above However, prospective purchasers should have the tenure of this property confirmed by a solicitor.

Additional Information Local Authority: North East Lincolnshire Council Telephone 01472 313 131

Services: All mains services are available or connected subject to the statutory regulations. we have not tested any heating systems, fixtures, appliances or services.

DISCLAIMER - IMPORTANT NOTICE REGARDING SALES PARTICULARS

Although we have taken great care to ensure the accuracy of the information contained in these particulars, we specifically deny liability for any mistakes, omissions or errors and strongly advise that all proposed purchasers should satisfy themselves by inspection or otherwise, as to their correctness, prior to entering into any commitment to purchase. Any references to the condition, use or appearance of the property or appliances therein, are made for guidance only, and no warranties are given or implied by this information. It is not the Agents policy to check the position with regards to any planning permission or building regulation matters and as such all interested parties are advised to make their own enquiries., in order to ensure that any necessary consents have been obtained. Measurements are taken from wall to wall unless otherwise stated, with the metric conversion shown in brackets. Any plans or maps contained are for identification purposes only and are not for any other use but guidance and illustration. The Agents have not tested any apparatus, equipment, fixtures, fittings or services including central heating systems and cannot therefore