



# Millennium Drive

London, E14

Offers in Excess of £550,000

A lovely 2-bedroom apartment by a waterside development on the Isle of Dogs, combined with modern comfort, characterful design and stunning River Thames views.

**CHESTERTONS**



# Millennium Drive

London, E14

- Two bedrooms | Two Bathrooms
- Spectacular River Thames views from private balcony
- Integrated kitchen appliances
- Bathroom with built-in waterproof TV
- Underfloor and combi heating system
- Private underground parking space
- 0.6km from North Greenwich Station
- 0.5km from Crossharbour DLR Station



Set within the desirable waterside development of Millennium Wharf on the eastern flank of the Isle of Dogs this beautifully designed 2-bedroom apartment offers modern comfort, characterful design, and serene River Thames views — ideal for individuals, couples, or small families seeking stylish riverside living.

High-quality 20mm solid wood flooring runs throughout, leading into a bright open-plan living and dining area with full-height windows and access to a private balcony overlooking the river. A striking exposed brick wall adds an urban touch to the contemporary interior. The sleek, fully integrated kitchen offers ample storage and modern appliances, combining style with practicality. Both bedrooms are generously sized with good sized windows and built-in storage, comfortably fitting king-sized beds.

The luxurious bathroom features a built-in waterproof TV, perfect for relaxing, and the property benefits from underfloor and combi heating for year-round comfort. You are granted with access to private underground parking, a valuable asset in this prime location. With scenic riverside walks, local amenities, and excellent transport links all within easy reach, this home offers the perfect balance of tranquillity and convenience.

**Tenure:** Share of Freehold 96 years approx. remaining

**Service Charge:** £4,056.79 pa approx. Combined £3,558.59 to BPM and £498.20  
Meto PM.

**Ground Rent:** Peppercorn

**Local Authority:** Tower Hamlets

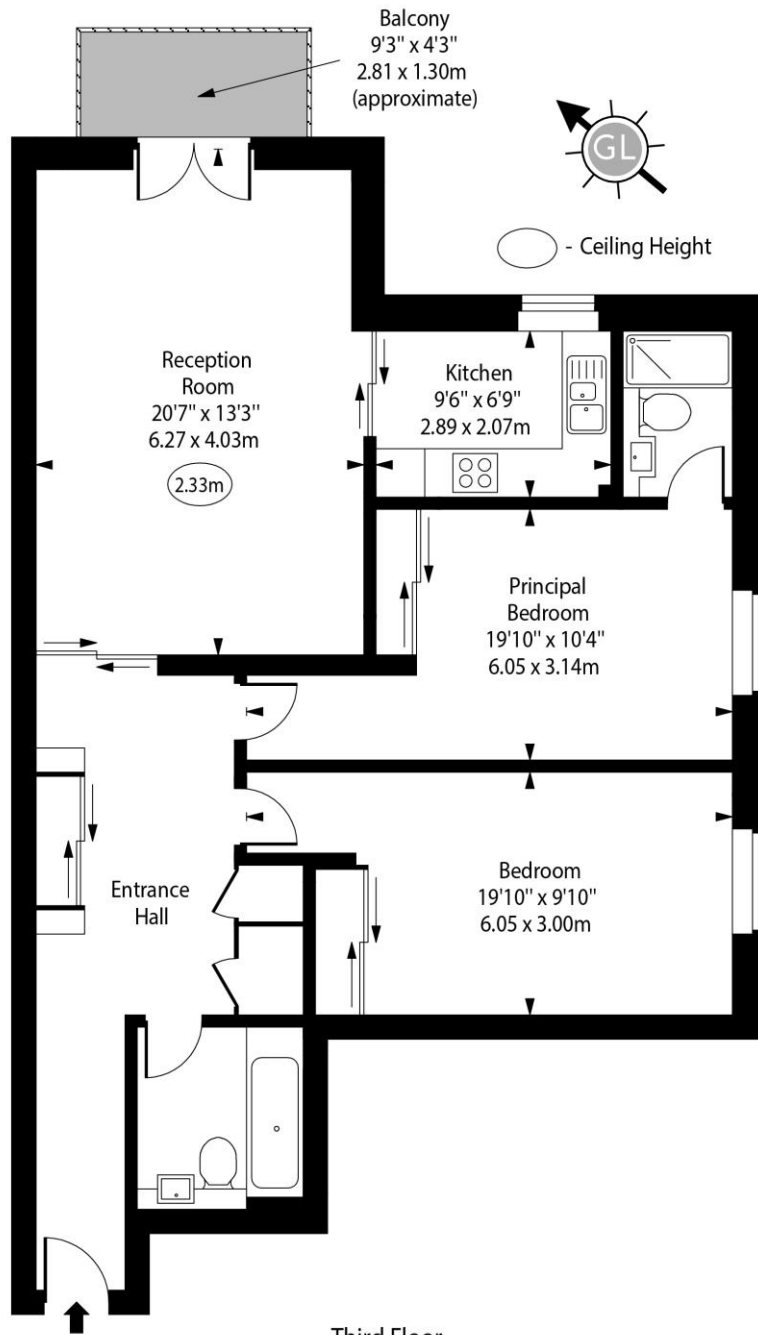
**Council Tax Band:** F

Score	Energy rating	Current	Potential
92+	A		
81-91	B		
69-80	C	81 B	83 B
55-68	D		
39-54	E		
21-38	F		
1-20	G		

### *Chestertons Canary Wharf & Greenwich Sales*

Harbour Island  
 28 Harbour Exchange Square  
 London  
 E14 9GE  
 canarywharf@chestertons.co.uk  
 020 7510 8300  
 chestertons.co.uk

# Millennium Drive, E14



Third Floor

Approx Gross Internal Area 967 Sq Ft - 89.83 Sq M

Every attempt has been made to ensure the accuracy of the floor plan shown. However, all measurements, fixtures, fittings, and data shown are approximate interpretations and for illustrative purposes only. Measured according to the RICS. Not To Scale.

[www.goldlens.co.uk](http://www.goldlens.co.uk)

Ref. No. 029467D

