



Aneurin Crescent, £200,000

- Well presented
- Off Road parking
- Rear garden
- Ideal First time buyer
- Close to local amenities
- Great transport links
- EPC Rating: C



3 1 1



About the property

We are delighted to present this three-bedroom semi-detached house in a popular residential area. This property benefits from excellent transport links and is close proximity to nearby schools and a wide range of local amenities.

Upon entering, you are greeted by a welcoming open-plan living/dining/kitchen ideal for relaxation or entertaining guests. To the first floor, you will find three bedrooms and a family bathroom.

Externally, the home features off-road parking, ensuring convenience for residents and visitors alike. The rear garden provides an ideal space for outdoor entertaining, gardening, or children's play.

This property truly represents an exceptional opportunity to secure a family home in a desirable area, combining comfort, convenience, and great potential. Early viewing is highly recommended to fully appreciate all this home has to offer.

Agents Note

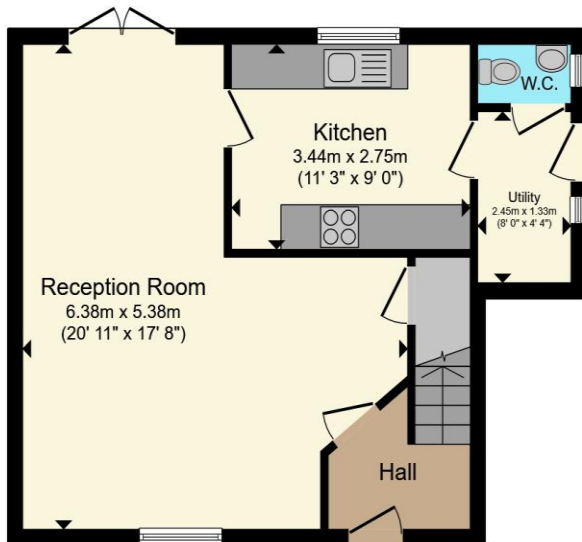


Accommodation

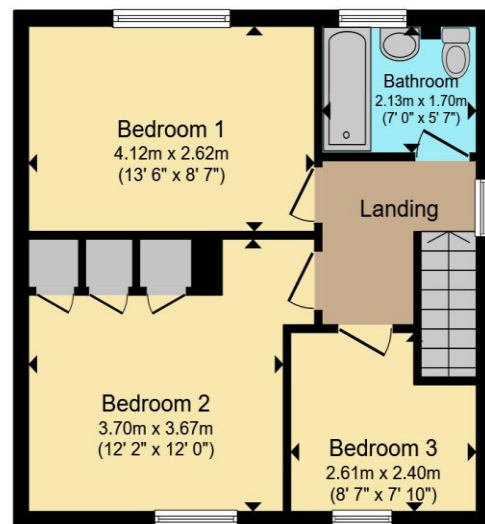
01685 722223

merthyrdyfil@peteralan.co.uk

Floorplan



Ground Floor



First Floor

Total floor area 88.4 m² (952 sq.ft.) approx

This floor plan is for illustrative purposes only. It is not drawn to scale. Any measurements, floor areas (including any total floor area), openings and orientation are approximate. No details are guaranteed, they cannot be relied upon for any purpose and they do not form part of any agreement. No liability is taken for any error, omission or misstatement. A party must rely upon its own inspection(s). Powered by www.propertybox.io



Important Information

Note while we endeavour to make our sales details accurate and reliable, if there is any point which is of particular interest to you, please contact the office and we will be pleased to confirm the position for you. We have not personally tested any apparatus, equipment, fixtures, fittings or services and cannot verify they are in working order or fit for their purposes. Nothing in these particulars is intended to indicate that carpets or curtains, furnishings or fittings, electrical goods (whether wired or not). Gas fires or light fittings or any other fixtures not expressly included form part of the property offered for sale. This computer generated Floorplan, if applicable, is intended as a general guide to the layout and design of the property. It is not to scale and should not be relied upon for dimensions. Tenure: We cannot confirm the tenure of the property as we have not had access to the legal documents. The buyer is advised to obtain verification from their solicitor or surveyor.

Peter Alan Limited is registered in England and Wales under company number 2073153, Registered Office is Cumbria House, 16-20 Hockliffe Street, Leighton Buzzard, Bedfordshire, LU7 1GN. VAT Registration Number is 500 2481 05. For activities relating to regulated mortgages and non-investment insurance contracts, Peter Alan Limited is an appointed representative of Connells Limited which is authorised and regulated by the Financial Conduct Authority. Connells Limited's Financial Services Register number is 302221. Most buy-to-let

