



DAMAC Tower, Bondway

Asking Price £2,875,000

Welcome to this stunning new build apartment located in the prestigious DAMAC Tower on Bondway. Spanning an impressive 1,576 square feet, this property offers a perfect blend of modern living and elegant design.

Upon entering, you are greeted by a spacious reception room that provides a warm and inviting atmosphere, ideal for both relaxation and entertaining guests. The apartment boasts three well-proportioned bedrooms, each designed to offer comfort and tranquillity. With two stylish bathrooms, you will find ample space for family and guests alike, ensuring convenience and privacy.

The contemporary design of this apartment reflects the latest trends in modern architecture, making it a desirable choice for those seeking a luxurious lifestyle. The new build status guarantees that you will benefit from the latest fixtures and fittings, providing a fresh and pristine living environment.

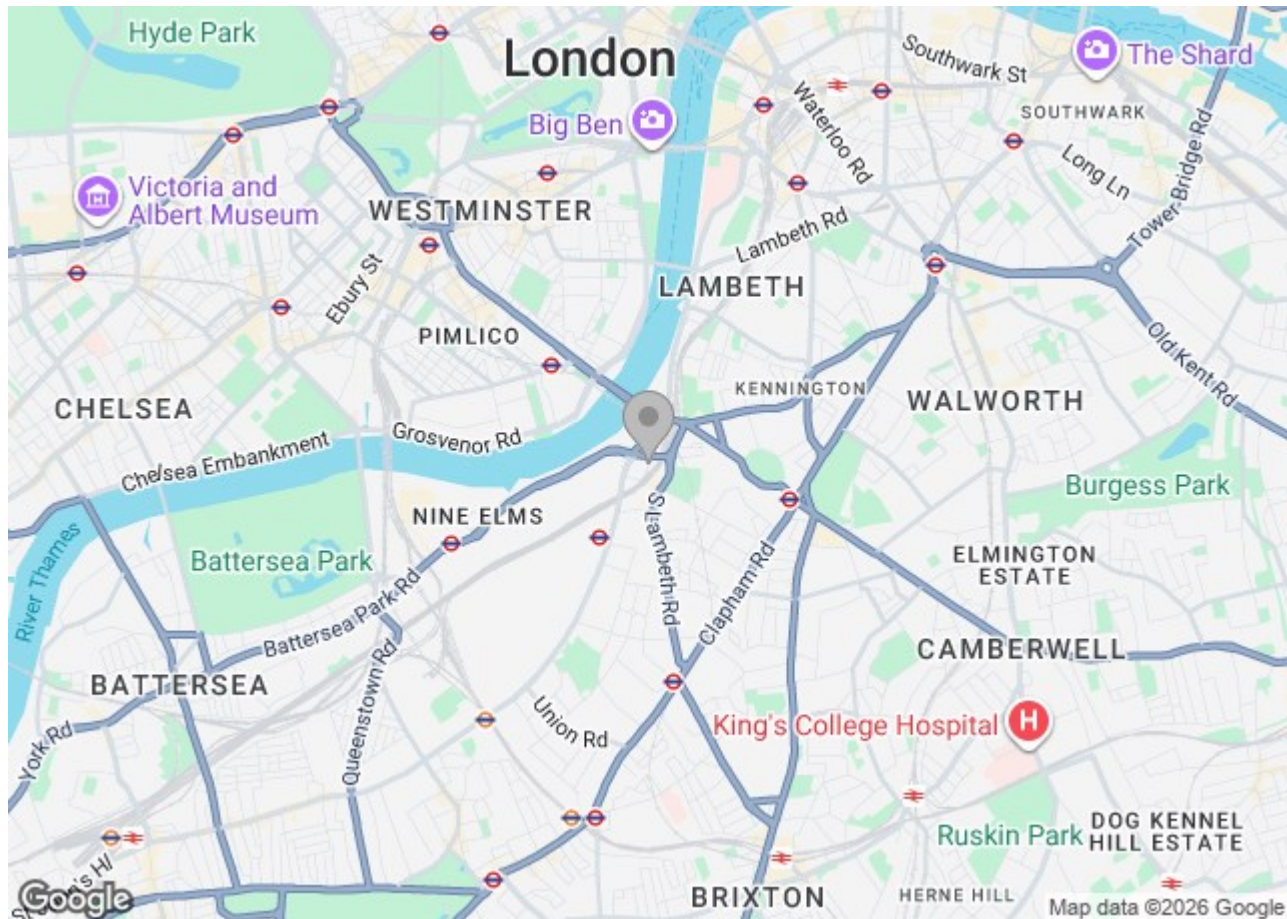
Situated in a sought-after location, this property not only offers a beautiful home but also easy access to local amenities and transport links, making it an ideal choice for both families and professionals.

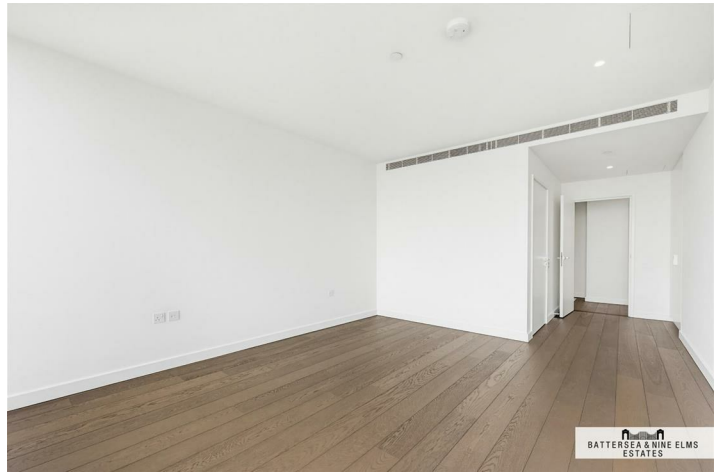
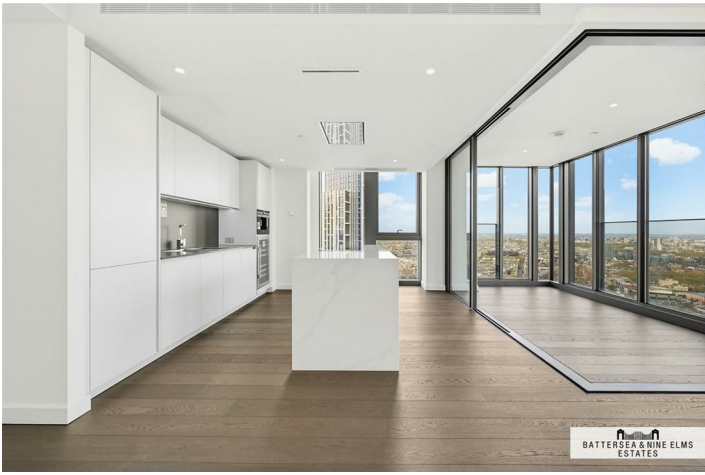
In summary, this apartment in DAMAC Tower is a remarkable opportunity for anyone looking to invest in a modern, spacious, and stylish home in a prime location. Do not miss the chance to make this exceptional property your own.

67 Bondway London



- Lift access
- 24th floor gym
- Residents lounge
- Four double bedrooms
- Swimming pool
- Zone 1 transport links
- River views
- 24 Hour concierge
- **Photos of similar apartment - example only



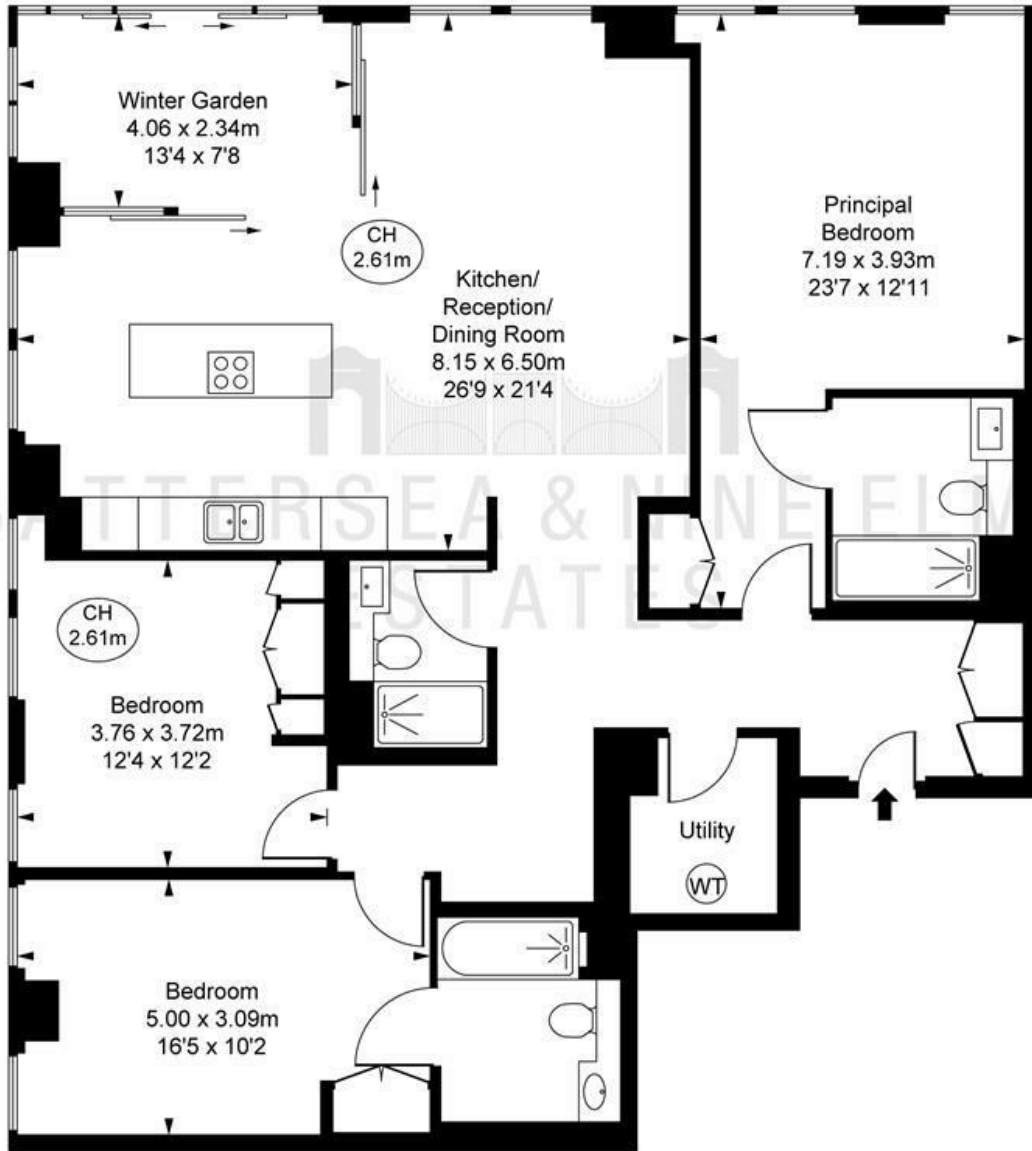
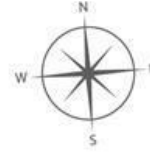


Damac Tower,
Bondway Parry Street, W8

Approximate Gross Internal Area
146.90 sq m / 1,581 sq ft

(Including Winter Garden
9.19 sq m / 99 sq ft)

(CH = Ceiling Heights)



Forty-Forth Floor



This plan is not to a given scale. A detailed layout plan to scale for valuation is available on request. All measurements and areas are within 1% tolerance and have been prepared in accordance with industry standards as defined in the RICS Code of Measuring Practice
© Fulham Performance

These particulars, whilst believed to be accurate are set out as a general outline only for guidance and do not constitute any part of an offer or contract. Intending purchasers should not rely on them as statements of representation of fact, but must satisfy themselves by inspection or otherwise as to their accuracy. No person in this firm's employment has the authority to make or give any representation or warranty in respect of the property.

Energy Efficiency Rating		Environmental Impact (CO ₂) Rating	
Current	Potential	Current	Potential
83	83		

Energy Efficiency Rating		Environmental Impact (CO ₂) Rating	
Very energy efficient - lower running costs	Very environmentally friendly - lower CO ₂ emissions	Current	Potential
(92 plus) A	(92 plus) A		
(81-91) B	(81-91) B		
(69-80) C	(69-80) C		
(55-68) D	(55-68) D		
(39-54) E	(39-54) E		
(21-38) F	(21-38) F		
(1-20) G	(1-20) G		
Not energy efficient - higher running costs	Not environmentally friendly - higher CO ₂ emissions		

England & Wales EU Directive 2002/91/EC