

Old Bethnal Green Road, E2

£1,850 Per calendar month

Well-presented studio flat in a purpose-built block in Bethnal Green, offering a bright open-plan living and sleeping area with a separate fitted kitchen and bathroom. The property benefits from communal gardens and a convenient location close to local amenities and transport links.

Ideally located for numerous amenities whilst the weekend markets of Columbia Road and Broadway Market are both moments away. Shoreditch and Liverpool Street are also within walking distance.

Features

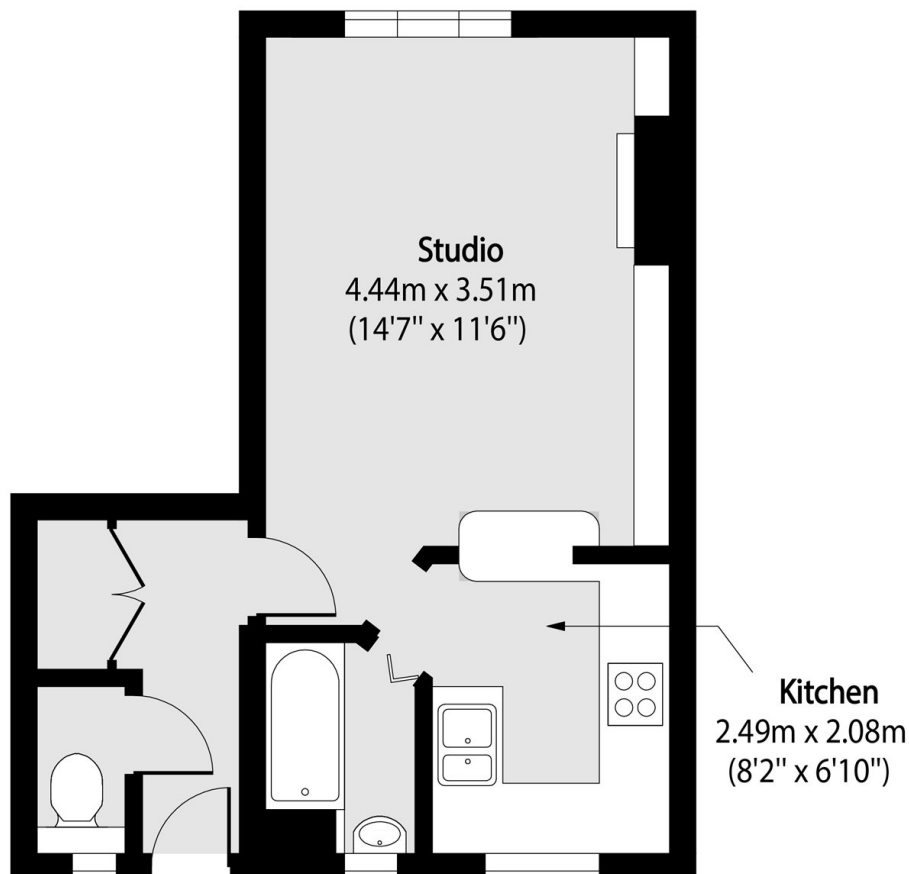
Purpose-built

Studio Flat

Furnished

Communal Gardens

Old Bethnal Green Road, London, E2



Total area (approx): 30.57 sq m (329 sq. ft)