



£200,000

Mansfield Road, Warsop, Mansfield,

Welcome to **BuckleyBrown**, where every home is carefully presented, so you can explore with clarity and confidence.

BuckleyBrown
ESTATE AGENTS

"From the moment you step inside, the sense of space and natural light is immediately apparent. The bay-fronted living room, spacious kitchen diner and flexible conservatory make this a home perfectly suited to family life. Combined with a great-sized garden and a convenient Warsop location, this is a property that ticks many of the boxes buyers are searching for."

- Tim, Valuer



STYLE IN ABUNDANCE

We are excited to present this fantastic three-bedroom semi-detached home, ideally located in the popular village of Warsop.

Offering generous living space, modern interiors and off-street parking, this well-presented property provides everything needed for comfortable family living. Warsop is a sought-after location with a range of local amenities, including shops, schools and leisure facilities, while also benefiting from excellent transport links to nearby towns and surrounding countryside. Combining convenience, practicality and style, this home is an ideal choice for families, first-time buyers and those looking to upsize.



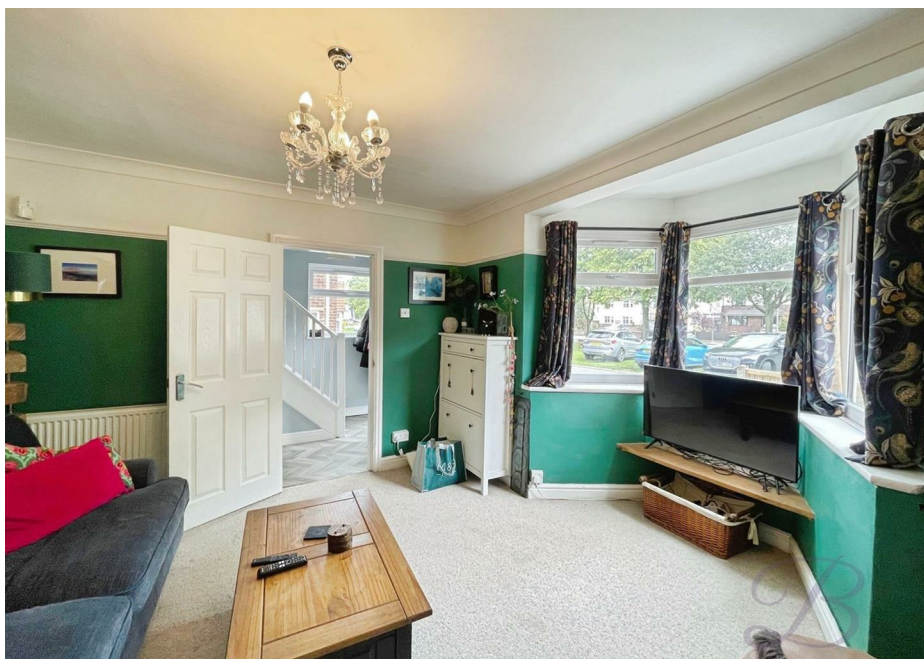
THE FINER DETAILS

Upon entering the property, you're welcomed by a spacious hallway that immediately sets the tone for the generous accommodation on offer. The living room is bright and inviting, featuring a stunning bay window that fills the space with natural light and creates a warm, welcoming atmosphere.

To the rear of the property, the modern kitchen diner provides the perfect hub for family life and entertaining. Fitted with a range of contemporary units and a stylish breakfast bar, there is also plenty of room for a dining table, making it an ideal space for both everyday living and social occasions. Double doors open into the conservatory, a versatile additional reception space that could be utilised as a home office, playroom, snug or hobby room to suit the needs of the new owners. Further doors provide direct access to the rear garden.

The first floor hosts three well-proportioned bedrooms, all offering comfortable accommodation. The principal bedroom benefits from an attractive bay window, enhancing the sense of space and light. Completing the accommodation is the family bathroom, fitted with a modern three-piece suite including a shower over the bath.

Externally, the property enjoys a driveway to the front, providing convenient off-street parking. To the rear, the enclosed garden is predominantly laid to lawn and features a patio seating area, creating the perfect setting for outdoor dining, entertaining or simply relaxing during the warmer months.





BuckleyBrown
ESTATE AGENTS







LIFE IN WARSOP

Warsop is a popular market town in north Nottinghamshire, offering a friendly community atmosphere, everyday convenience and excellent access to the countryside. Located between Mansfield and Worksop, and close to Sherwood Forest, it appeals to a wide range of buyers seeking a balance between town amenities and outdoor living.

The town provides a good selection of local shops, supermarkets, cafés, schools and healthcare facilities, creating a practical and well-served environment for families, professionals and retirees alike. Its traditional market town character adds to the area's appeal, while a strong sense of community makes it a welcoming place to live.

Surrounded by woodland and open countryside, Warsop is ideal for those who enjoy walking, cycling and spending time outdoors. Sherwood Forest and a variety of nearby nature trails are easily accessible, offering year-round opportunities for recreation and leisure.

Despite its semi-rural setting, Warsop remains well connected via the A60, providing convenient access to Mansfield, Worksop and the wider Nottinghamshire area. With its combination of affordability, local amenities and countryside surroundings, Warsop continues to be a popular choice for homebuyers across the region.



Key Features

Legal Fee Incentive

Spacious three-bedroom semi-detached home in a popular residential location.

Modern kitchen diner, perfect for family living and entertaining.

Versatile conservatory offering additional reception space.

Three well-proportioned bedrooms and a modern family bathroom.

Generous rear garden with lawn and patio seating area.

Driveway providing convenient off-street parking.

Ideally located close to local amenities, schools and transport links.

A fantastic opportunity for first-time buyers, families and downsizers alike.

Energy Performance Certificate -

Council Tax - A

BuckleyBrown
ESTATE AGENTS



These particulars are intended as a guide only and do not form part of any offer or contract. All descriptions, measurements, images and plans are provided for illustration purposes and should not be relied upon as statements of fact. Prospective purchasers should satisfy themselves as to the accuracy of the information. Buckley Brown Estate Agents accept no liability for any loss arising from reliance on these details.

© Buckley Brown Estate Agents 2026. All rights reserved.

Exceptional homes deserve
exceptional representation.

Let's Chat.

01623 633633

mansfield@buckleybrown.co.uk

buckleybrown.co.uk

BuckleyBrown
ESTATE AGENTS