



## 34 CLARENDON ROAD

Little Canfield, Dunmow, Essex, CM6 1GA

OFFERS OVER £550,000



COMMERCIAL | RESIDENTIAL | LETTINGS

[www.jamesandco.net](http://www.jamesandco.net)

- Attractive Detached Four Bedrooms
- En suite and Family Bathroom
- Three Reception Areas
- Kitchen with Utility Area
- Ground Floor Cloakroom
- Good Sized Garden
- Double Tandem Garage
- Well Situated On the Development





## Property Description

### THE PROPERTY

Wonderful detached four bedroom family home. Well situated on this ever popular development the property works beautifully as a family home with added advantage of a lovely garden and double tandem garage.

### Property Information

Freehold

Council Tax Band - E

EPC - Awaiting

All main services connected

### THE LOCATION

Clarendon Road is situated in Little Canfield between Great

Dunmow and Bishop's Stortford that offers Takeley Primary School, nursery and community hall.

Further schooling and facilities are available in the nearby towns as well as public houses and restaurants.

The nearby A120 bypass supplies quick and easy access to M11/M25 at the Bishop's Stortford junction which of course benefits from London Stansted International Airport that also supplies mainline railway links to London Liverpool Street Station.

### ENTRANCE HALL

### CLOAKROOM

### LIVING ROOM

20' 11" x 12' 9" (6.40m x 3.90m)

### SITTING ROOM

11' 5" x 10' 9" (3.50m x 3.30m)

### KITCHEN

11' 5" x 9' 6" (3.50m x 2.90m)

### UTILITY ROOM

7' 2" x 5' 2" (2.20m x 1.60m)

### DINING ROOM

9' 6" x 7' 2" (2.90m x 2.2m)

## FIRST FLOOR

### LANDING

#### BEDROOM 1

16' 8" x 10' 2" (5.10m x 3.10m)

#### EN SUITE

#### BEDROOM 2

12' 9" x 8' 5" (3.90m x 2.59m)

#### BEDROOM 3

11' 5" x 10' 2" (3.50m x 3.10m)

#### BEDROOM 4

8' 2" x 6' 6" (2.50m x 2m)

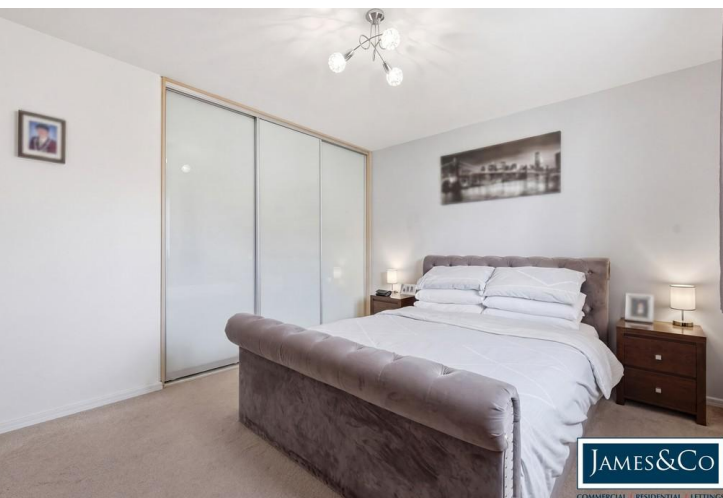
#### FAMILY BATHROOM

#### DOUBLE TANDEM GARAGE

#### OUTSIDE

The garden is laid mainly to lawn with a patio area.





**JAMES&Co**  
COMMERCIAL | RESIDENTIAL | LETTINGS

**JAMES&Co**  
COMMERCIAL | RESIDENTIAL | LETTINGS

**JAMES&Co**  
COMMERCIAL | RESIDENTIAL | LETTINGS

**JAMES&Co**  
COMMERCIAL | RESIDENTIAL | LETTINGS

**JAMES&Co**  
COMMERCIAL | RESIDENTIAL | LETTINGS

**JAMES&Co**  
COMMERCIAL | RESIDENTIAL | LETTINGS

## COUNCIL TAX BAND

Tax band E

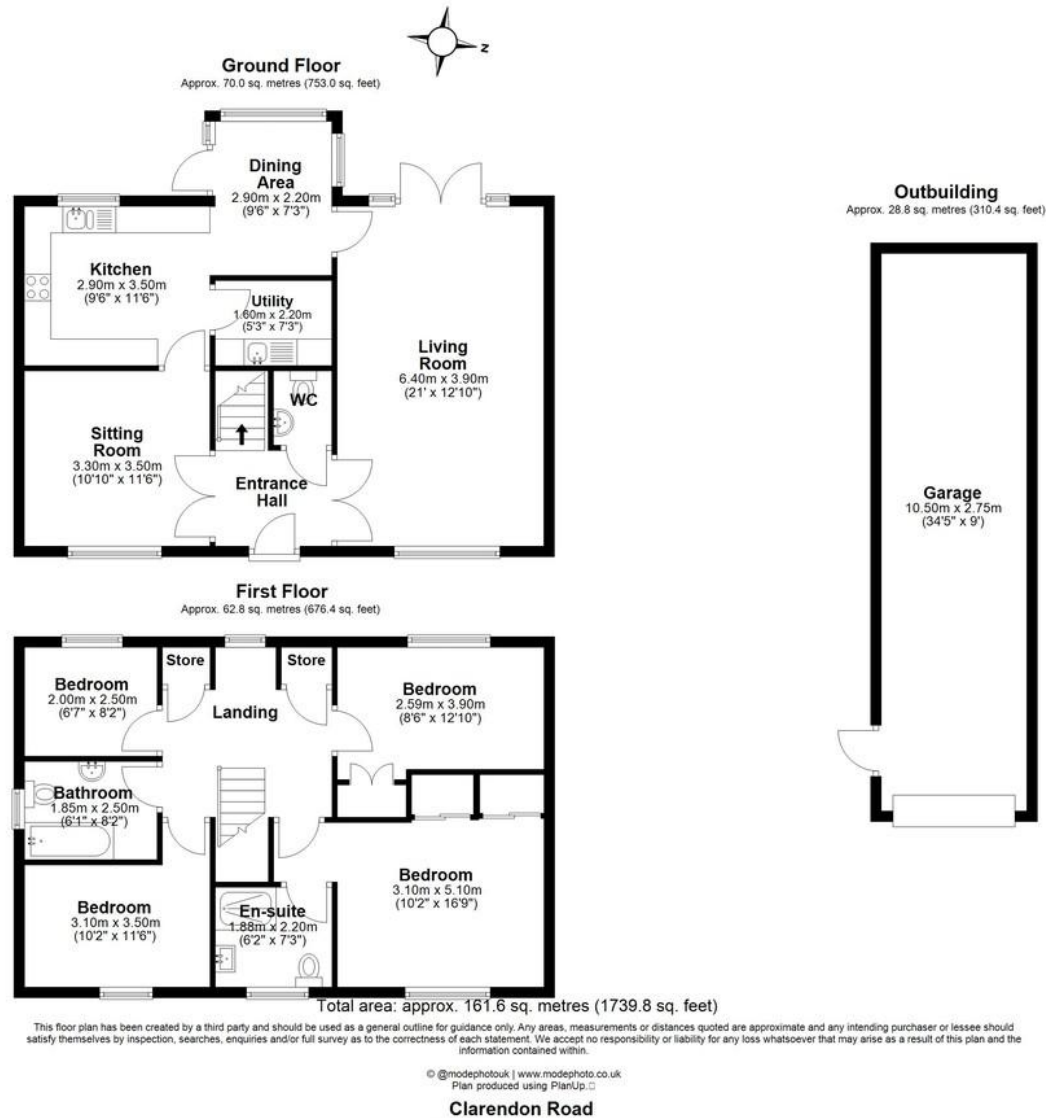
## TENURE

Freehold

## LOCAL AUTHORITY

Uttlesford District Council

Agents Note: Whilst every care has been taken to prepare these sales particulars, they are for guidance purposes only. All measurements are approximate and for general guidance purposes only and whilst every care has been taken to ensure their accuracy, they should not be relied upon and potential buyers are advised to recheck the measurements



4 Stortford Road, Dunmow, Essex, CM6 1DA

01371 876678

info@jamesandco.net

www.jamesandco.net

