



# Meldon

High Heworth Lane, Gateshead



Yale

MELDON

S

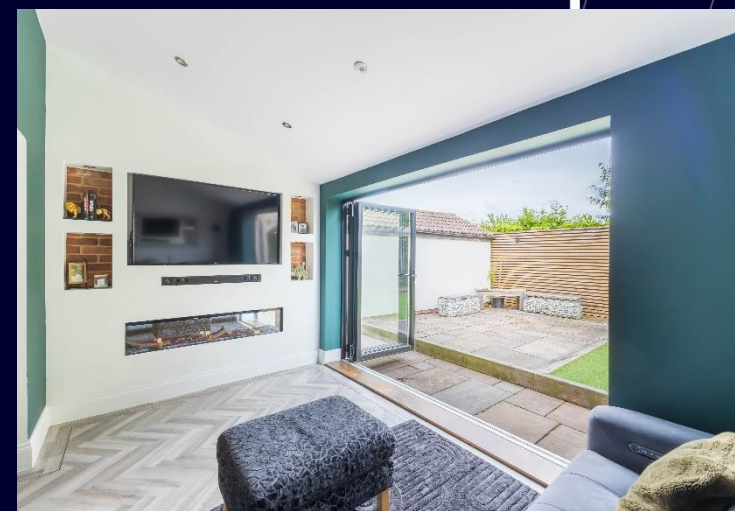
## Meldon, High Heworth Lane, Heworth, Gateshead, Tyne & Wear, NE10 0PB

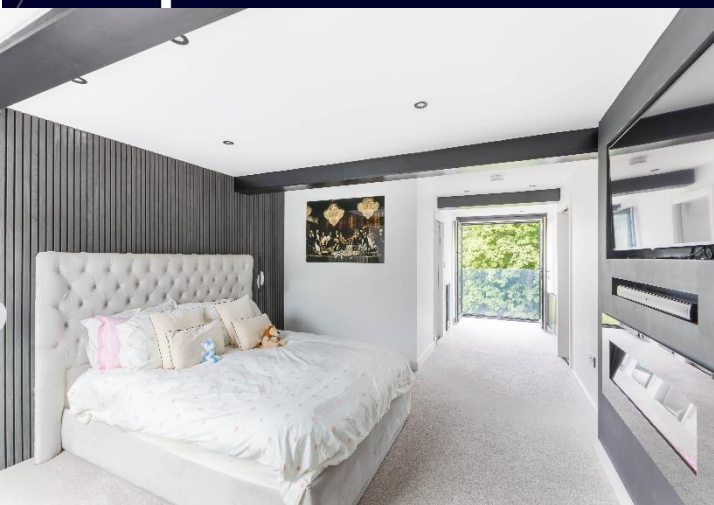
Beautifully Presented & Substantial Detached Family Home Boasting Four Bedrooms, Three Bathrooms, Two Reception Rooms, Stunning Open Plan Kitchen/Diner, Utility, Gated Off Street Parking & Landscaped Gardens!

Meldon offers an extremely impressive, detached family home which has been sympathetically upgraded throughout to combine period features with a stylish contemporary finish.

The existing owner has significantly enhanced the property with a series of works including a loft conversion to form an excellent principal suite and newly fitted bespoke kitchen, amongst many other works.

Boasting in excess of 2,100 sq.ft, the internal accommodation comprises: Entrance hall with understairs storage | Front sitting room with feature bay window and log burning stove | Open plan kitchen/diner with newly laid flooring, a range of bespoke cabinetry & worktops, integrated appliances throughout and a central island with breakfast bar | Day to day family room with media wall and electric fireplace | Utility | Ground floor WC.





The staircase then leads up to the first floor landing and onto three bedrooms | Bedroom two is positioned to the front and enjoys a large double room with bay window, ample fitted storage and ensuite shower room WC | Bedroom three is a further generous double to the rear | Bedroom four is a large single bedroom | Family bathroom with contemporary three piece suite, including free standing tub.

The staircase then continues up to the loft conversion and onto an excellent principal suite. The principal bedroom offers a dormer to the rear with Juliet balcony and a large double bedroom with media wall | The suite connects through to a dressing room with a range of bespoke units leading through to an immaculate ensuite shower room WC.

Externally, the property is approached via a dwarfed wall and electronic gated entrance which leads to a gravel driveway, offering ample off street parking | To the rear is a relandscaped garden which is laid partially to artificial turf and partially to a paved patio terrace to enjoy the sun throughout the day.

Presented to an immaculate standard throughout, early viewings are strongly encouraged.

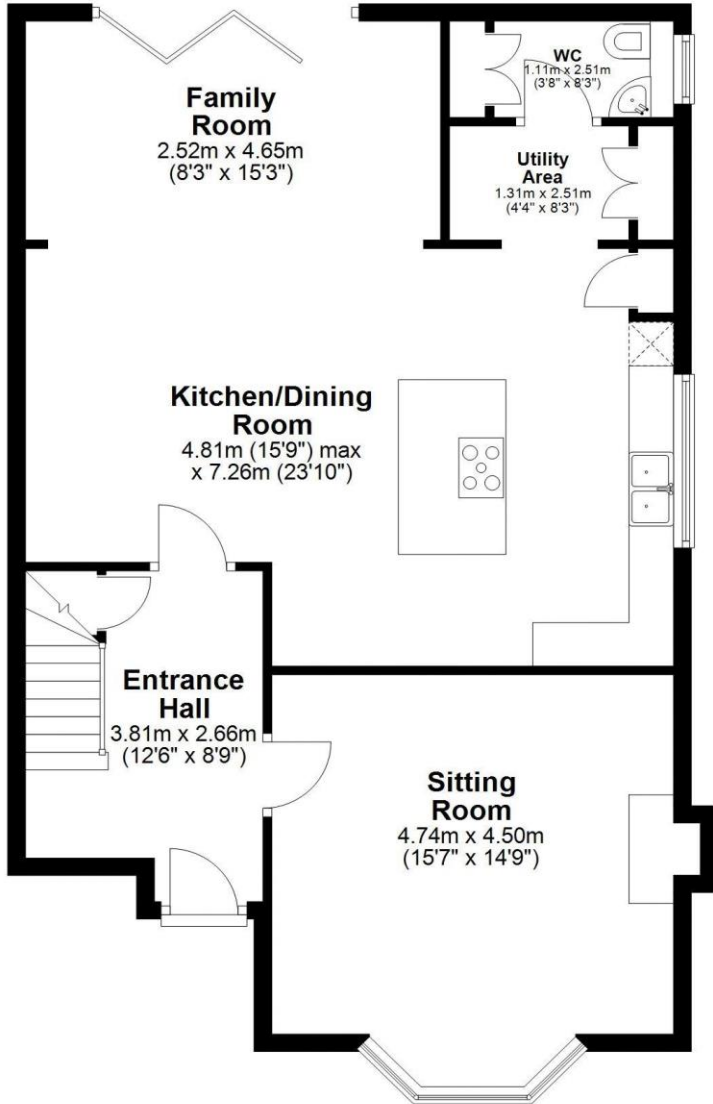
Services: Mains gas, electricity, water & drainage | Tenure: Freehold | Council Tax: Band D | EPC: Rating D

**Price Guide: Offers Over £525,000**



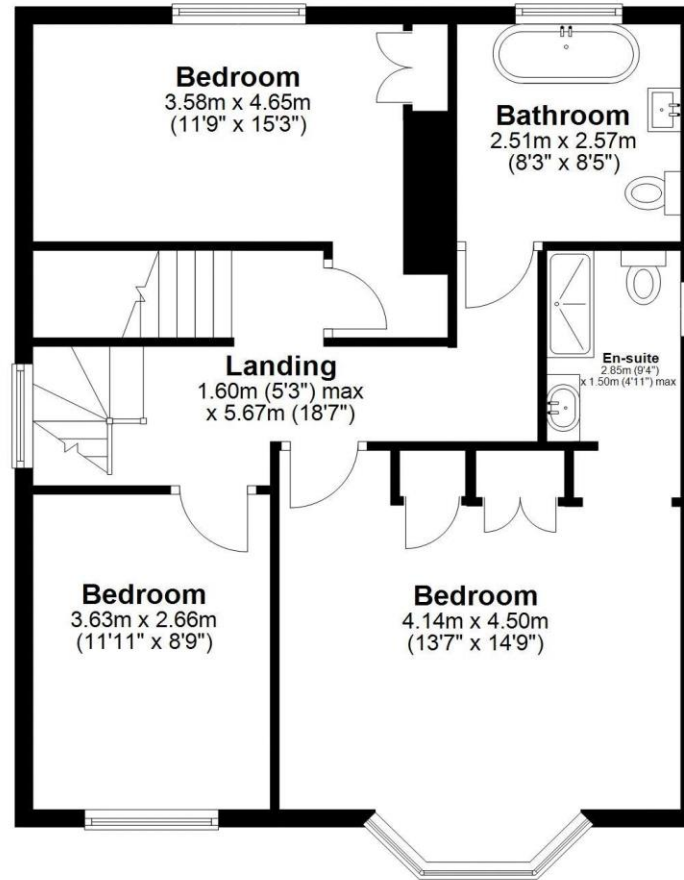
### Ground Floor

Approx. 80.1 sq. metres (862.6 sq. feet)



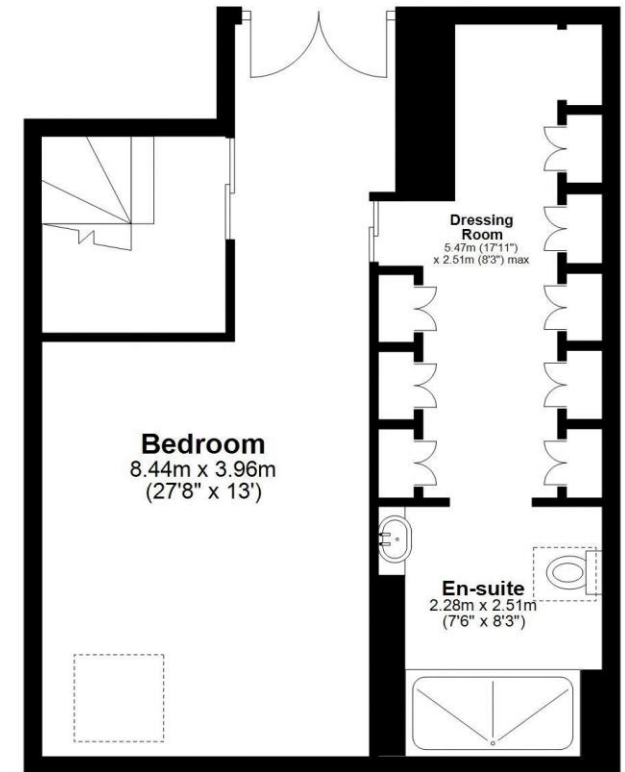
### First Floor

Approx. 66.2 sq. metres (712.3 sq. feet)



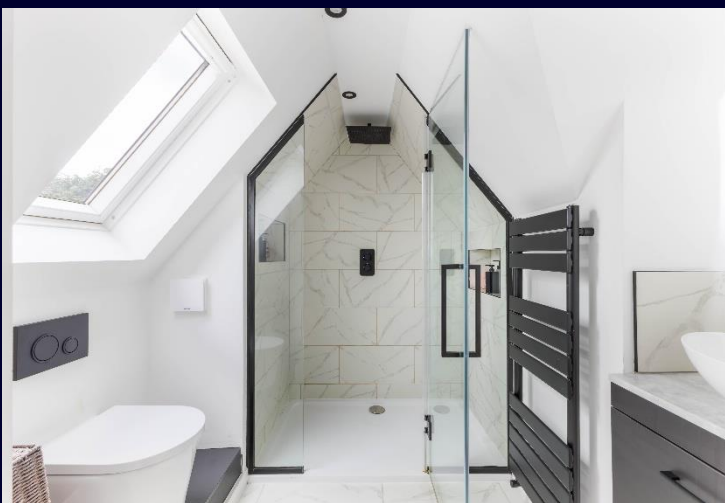
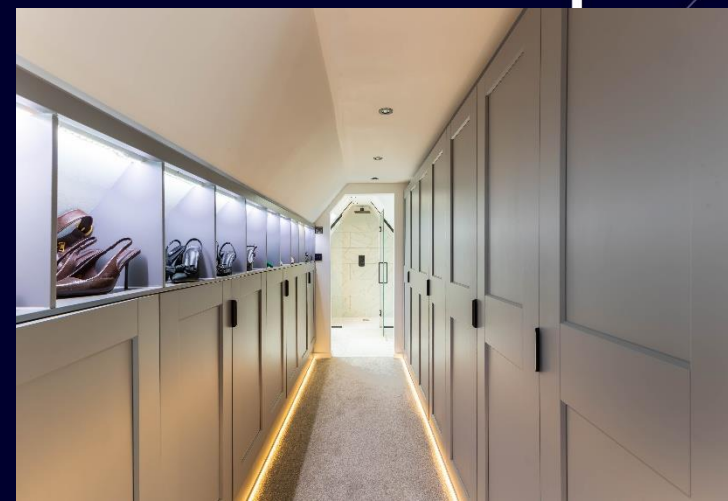
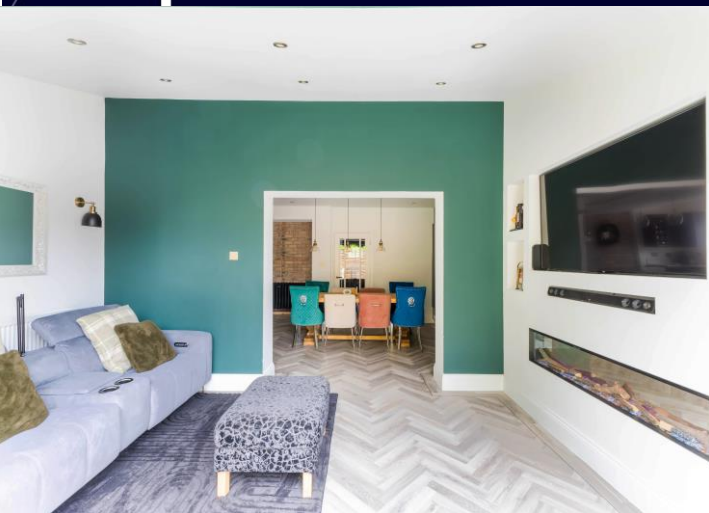
### Second Floor

Approx. 50.2 sq. metres (540.3 sq. feet)



Total area: approx. 196.5 sq. metres (2115.2 sq. feet)

**Meldon, High Heworth**





SANDERSON  
YOUNG

Regional Gosforth Office  
95 High Street | Gosforth  
Newcastle upon Tyne | NE3 4AA  
[gosforth@sandersonyoung.co.uk](mailto:gosforth@sandersonyoung.co.uk)  
0191 213 0033