

Sloane Avenue, SW3

£2,058 Per calendar month

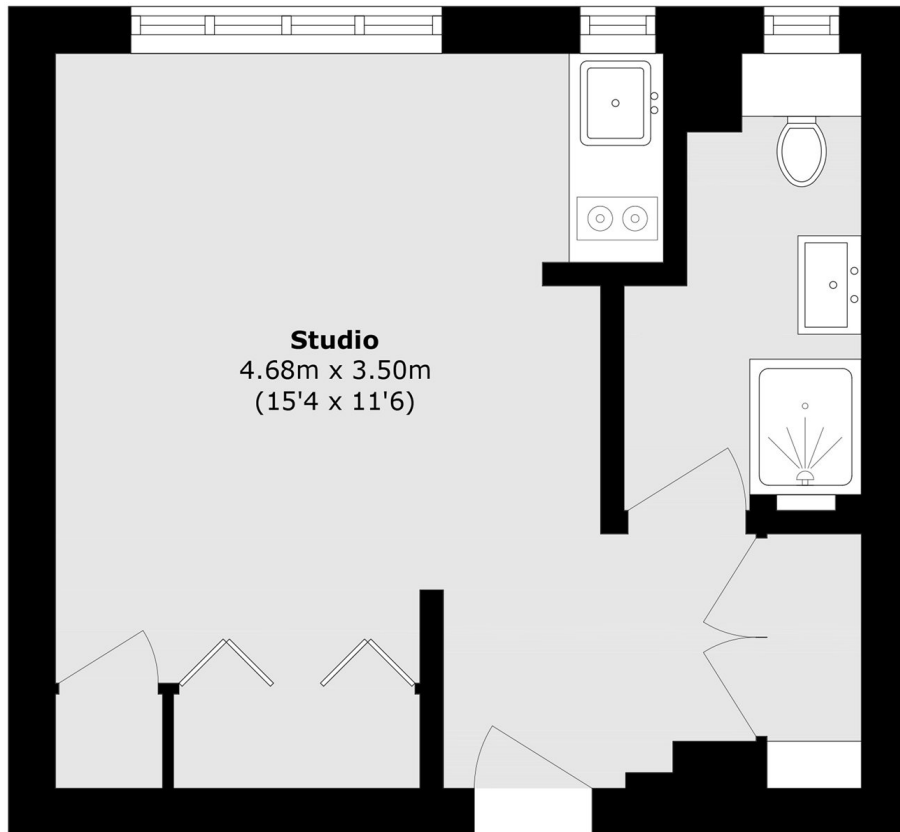
Immaculate and ultra modern studio flat to rent in the heart of Sloane Square. The property has been finished to a very high standard throughout and is located on the ninth floor allowing fantastic views over Chelsea and so much natural light. Perfect for a professional tenant.

Sloane Avenue Mansions is located between Kings Road and Fulham Road. There are so many local amenities available making this such a great part of Chelsea to live in.

Features

- Portered Building
- Prestigious Mansion Block
- Ninth Floor
- Lift Access
- Marble bathroom
- Refurbished Throughout

Sloane Avenue, London, SW3



Total area (approx.): 24.0 sq. m (258.3 sq. ft)