



Rotherhithe Street, London, SE16 5XX

A very generous apartment in sought after portered riverside warehouse conversion in the heart of Rotherhithe.

The property boasts a spacious living room featuring wooden flooring throughout and exposed bricks walls, a generous kitchen, a double bedroom with built in wardrobe and a well kept bathroom.

Globe Wharf it was originally a granary and then a rice warehouse. With on-site concierge, gym, as well as access to a heated swimming pool, and many amenities on its doorstep is now one of the most sought-after developments in South East London.

Council Tax Band: E

£1,900 Per month

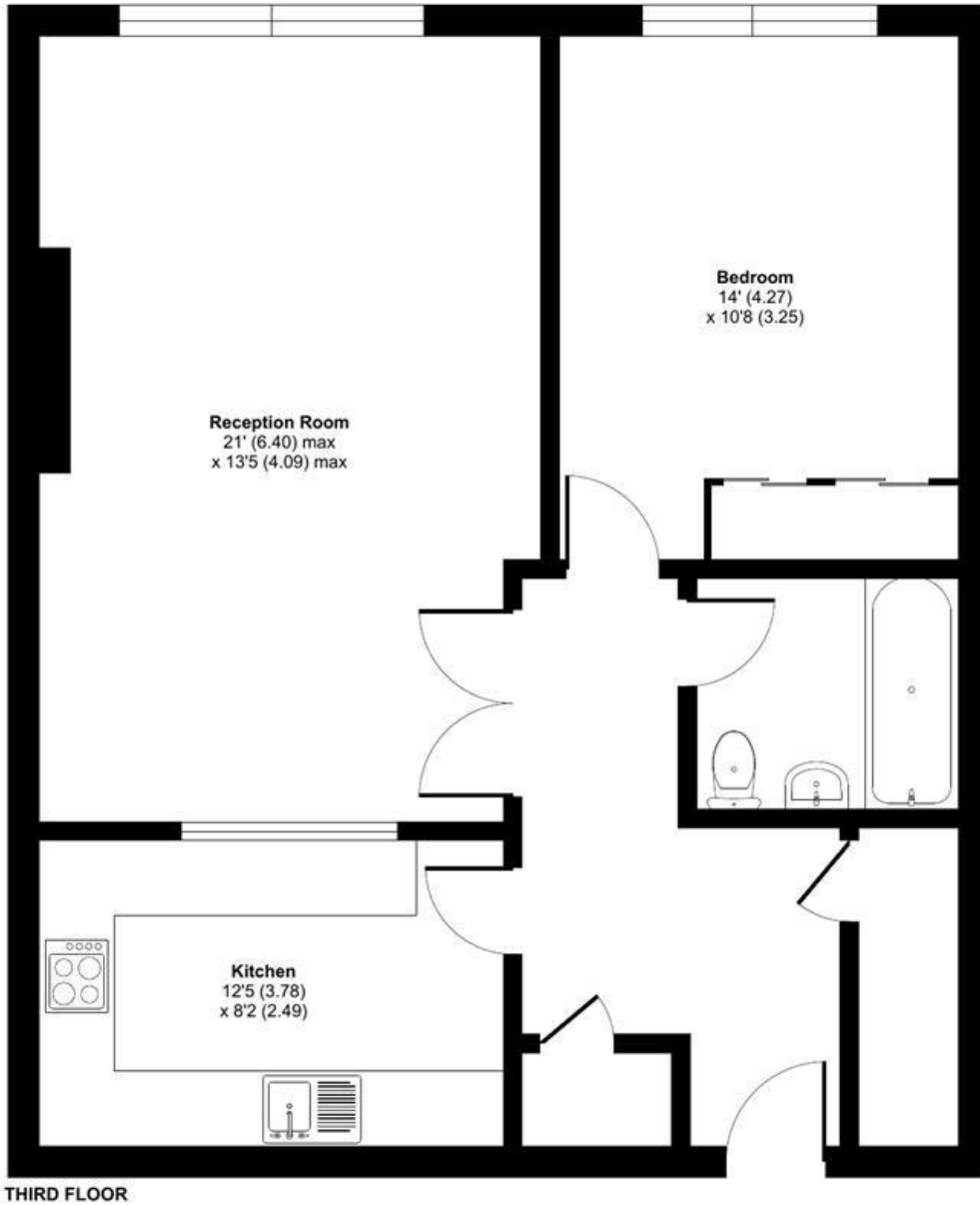
- Generous Apartment
- Sought-After Riverside Development
- Concierge, Gym, Swimming Pool
- Steps from Grocery Shop
- Short Walk From Underground and Overground Stations

Alex & Matteo
ESTATE AGENTS

Globe Wharf, 205 Rotherhithe Street, London, SE16

Approximate Area = 729 sq ft / 67.7 sq m

For identification only - Not to scale



Floor plan produced in accordance with RICS Property Measurement Standards incorporating International Property Measurement Standards (IPMS2 Residential). © nitchcom 2023. Produced for Alex & Matteo Estate Agents. REF: 1026638

Energy Efficiency Rating		Current	Potential
Very energy efficient - lower running costs			
(92 plus) A			
(81-91) B		81	84
(69-80) C			
(55-68) D			
(39-54) E			
(21-38) F			
(1-20) G			
Not energy efficient - higher running costs			
England & Wales		EU Directive 2002/91/EC	