

Framlingham
Crescent

SE9 4AF



***** CHAIN FREE SALE *****

Offering spacious living across two levels, this three-bedroom split-level maisonette on Framlingham Crescent, SE9, is available chain-free and presents an excellent opportunity for first-time buyers or investors.

Boasting a generous 1194 sq ft of living space, this property features three comfortable double bedrooms, a well-proportioned reception room, separate lounge/diner, fitted kitchen and a family bathroom. The layout provides ample room for both relaxation and everyday living. Outside, a large private garden to the rear offers a superb space for outdoor enjoyment and entertaining. Residents will benefit from allocated off-street parking, in addition to convenient on-street parking options.

Situated in a sought-after location, this home benefits from excellent transport links, making commutes straightforward. Local amenities, shops, and reputable schools are all within walking distance, providing convenience for daily needs.

With a long lease length and no onward chain, this maisonette is ready for its new owners. Contact us today to arrange your viewing!

Lease Length - 105 Years
Service Charge - Varies
Ground Rent - £10 Per Annum (all figures are approx.)



Key Features:

- ❑ Chain Free Sale
- ❑ Split Level Maisonette
- ❑ Three Double Bedrooms
- ❑ Private Garden To Rear
- ❑ Long Lease Length
- ❑ Off Street Parking
- ❑ Ideal First Time Purchase Or Buy To Let Investment
- ❑ Located For Excellent Transport Links
- ❑ Walking Distance To Good Schools
- ❑ Council Tax Band C - London Borough Of Bromley



EPC: C

COUNCIL TAX BAND: C

TENURE: Leasehold

For more information on this property or to arrange a viewing please call the office on

0208 859 8590

Alternatively, you can scan below to view all of the details of the property online.

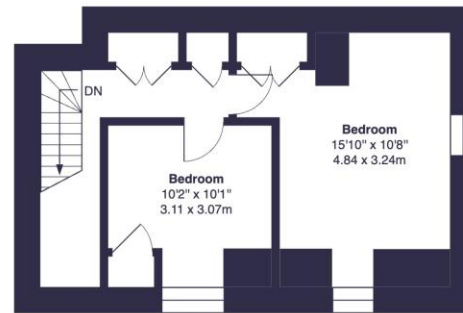


352 Footscray Road
New Eltham
London
SE9 2EB

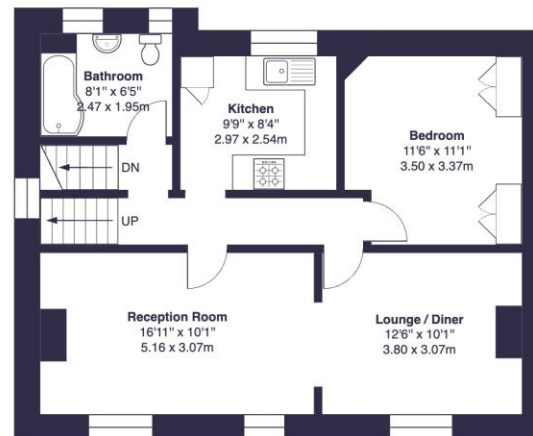


Framlingham Crescent, SE9

Approximate Gross Internal Area =
1194 sq ft / 110.9 sq m



Second Floor



First Floor



Ground Floor

This floor plan was produced using RICS measurements standards 2nd edition.
For layout guidance only and not drawn to scale unless stated. Window and door openings are approximate.
Whilst every care is taken in the preparation of this plan, we would advise interested parties to check all dimensions, shapes and compass bearings prior to making any decisions reliant upon them. No liability is accepted for any errors.
By www.prim SQUARE photography.com / Copyright 2026