
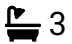



## Rising Sun, Callington, PL17

Guide Price £525,000

 4  3  2



A spacious four-bedroom detached bungalow set within approximately 0.55 acres of gardens, enjoying far-reaching countryside views. The property offers generous accommodation, a private driveway with ample off-road parking and no onward chain. The layout also provides an excellent opportunity for multi-generational living, with scope to convert the left-hand side of the property into a self-contained living space.

Situated within the hamlet of Rising Sun, approximately 3 miles from Callington and 7 miles from Tavistock. The nearby village of Harrowbarrow (just 0.7 miles away) offers a post office, primary school, public house, church, children's play park and a thriving village hall.

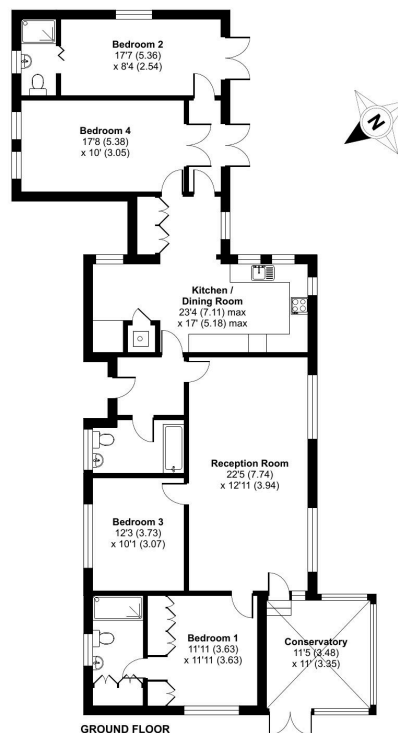
## Key Features

- TO ARRANGE A VIEWING PLEASE QUOTE BL0650
- Four Bedrooms (2 Ensuites)
- 0.55 Acre Plot
- Private Driveway With Ample Parking
- Countryside Views
- Detached Bungalow
- Spacious Accommodation
- Multi-Generational Living Potential
- South-Facing Garden
- Freehold

### Rising Sun, Callington, PL17

Approximate Area = 1675 sq ft / 155.6 sq m

For identification only - Not to scale



Floor plan produced in accordance with RICS Property Measurement Standards incorporating International Property Measurement Standards (IPMS2 Residential). ©richcom 2026. Produced for Ben Estates TA Ben Langton Powered By exp. REF: 1402319