

HUNTERS[®]

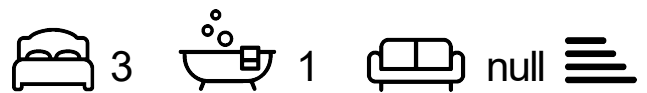
HERE TO GET *you* THERE



Walworth Road

London, SE17 3HQ

£2,400 Per Calendar Month



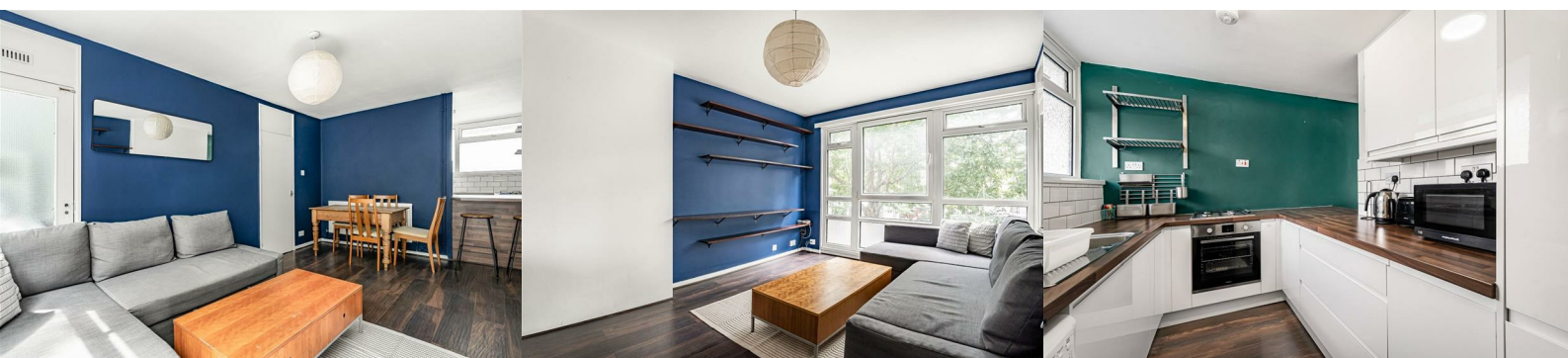
Purpose built split level 3 double bedroom apartment.

This well proportioned apartment benefits from a spacious separate reception, modern fitted kitchen with a range of high specification integrated appliances and separate 'bonus' room/study.

On the first floor are three good sized double bedrooms and contemporary bathroom with both bath and shower fitting. There is a separate WC making it perfect for sharers.

Situated in the heart of Walworth minutes from a vast range of bars restaurants and local amenities that this vibrant central London area has to offer.

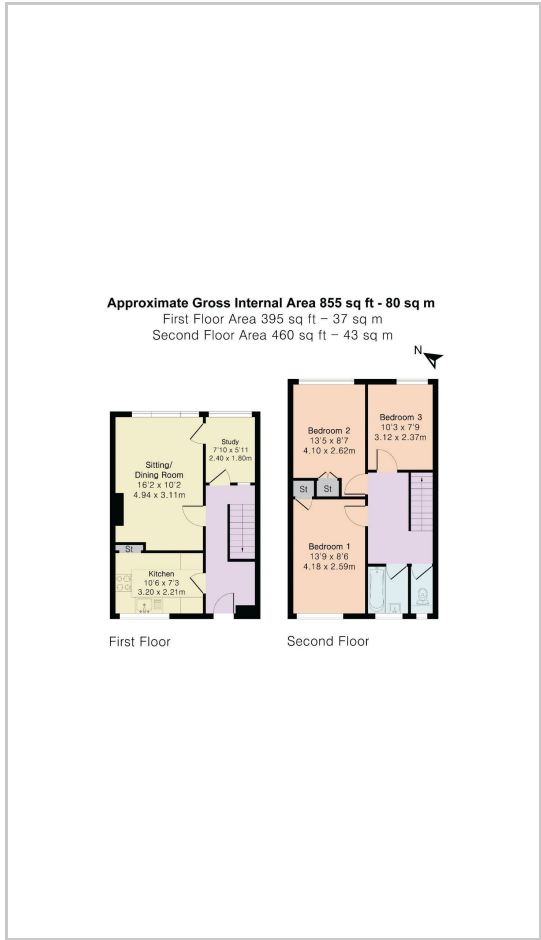
There are excellent transport links nearby including Elephant & Castle overland and underground providing quick easy access to the West End & City.



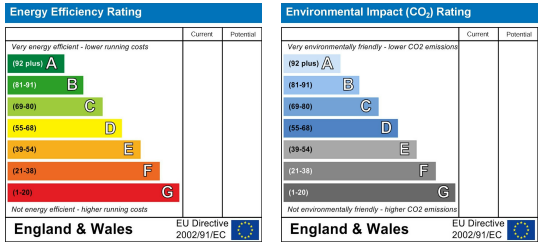
Area Map



Floor Plans



Energy Efficiency Graph



These particulars are intended to give a fair and reliable description of the property but no responsibility for any inaccuracy or error can be accepted and do not constitute an offer or contract. We have not tested any services or appliances (including central heating if fitted) referred to in these particulars and the purchasers are advised to satisfy themselves as to the working order and condition. If a property is unoccupied at any time there may be reconnection charges for any switched off/disconnected or drained services or appliances - All measurements are approximate. **THINKING OF SELLING?** If you are thinking of selling your home or just curious to discover the value of your property, Hunters would be pleased to provide free, no obligation sales and marketing advice. Even if your home is outside the area covered by our local offices we can arrange a Market Appraisal through our national network of Hunters estate agents.