



, Hexagon Apartments,  
33 Newton Street, WC2B

£3,750 Per Month,

NAPIER WATT

T: 0207 935 0011  
E: [enquiries@napierwatt.co.uk](mailto:enquiries@napierwatt.co.uk)  
W: [napierwatt.co.uk](http://napierwatt.co.uk)

35 Berkeley Square, Mayfair, London, W1J 5BF







## Description

Hexagon Apartments is a central, modern development with a 24 hour concierge. A geometric tower with floor to ceiling windows and interiors finished by Michaelis Boyd create this luxurious 1 bedroom apartment on the 5th floor. Boasting comfort heating/cooling, chevron timber flooring throughout, good storage, separate washing machine and tumble dryer and excellent natural light. Comprising entrance hall, open plan reception / kitchen, bedroom, walk in wardrobe and bathroom with under floor heating. Offering westerly views over Covent Garden and a short walk to the famous Piazza, as well as the vast range of restaurants and entertainments on the doorstep.

Transport is available just moments away at Holborn Underground Station (Central Line), or Covent Garden (Piccadilly) a 5 minute walk. An array of buses offer swift access to Overground Railway Stations in all directions.

1 Bedroom : 1 Bathroom : 24-Hour Concierge : Lift : EPC Rating B : Camden Council Band F

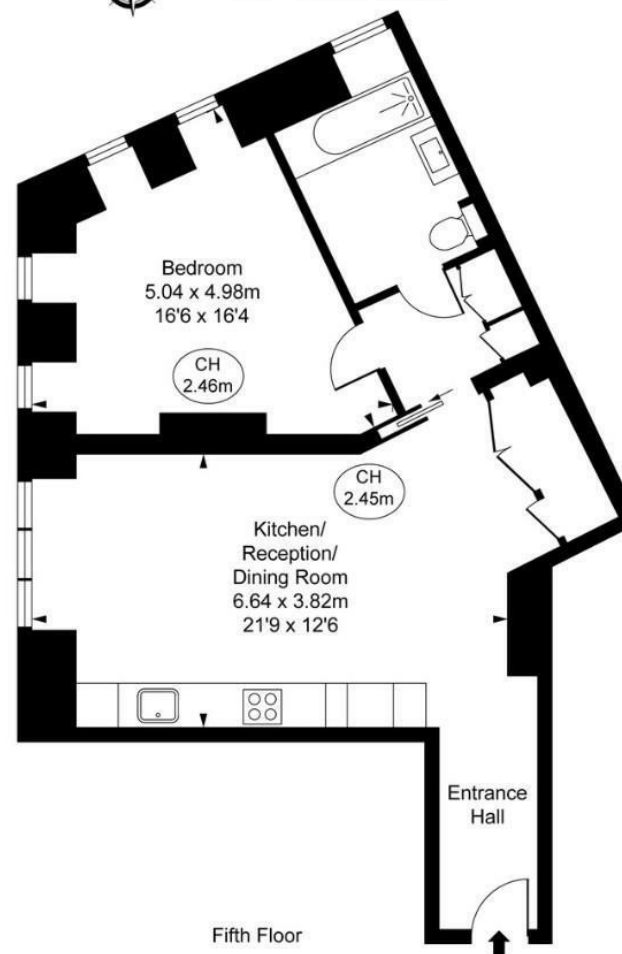
## Key Features

- 24-HOUR CONCIERGE
- 5th FLOOR
- WOOD FLOORING
- EASY ACCESS TO COVENT GARDEN
- COMFORT COOLING
- LIFTS
- CENTRAL LOCATION
- GOOD ENERGY EFFICIENCY

## Terms

Fees & Charges: Tenancies exceeding £100,000 Per annum £480 inc VAT, Tenancies where a company is a tenant £480 Inc VAT.

Newton Street, WC2B  
 Approximate Gross Internal Area  
 58.73 sq m / 632 sq ft  
 ( CH = Ceiling Heights )



This plan is not to scale. It is for guidance and not for valuation purposes.  
 All measurements and areas are approximate only, and have been prepared in accordance with the current edition of the RICS Code of Measuring Practice.  
 © Fulham Performance

IMPORTANT: We would inform prospective purchasers that these sales particulars have been prepared as a general guide only. A detailed survey has not been carried out, nor the services, appliances and fittings tested. Room sizes should not be relied upon for furnishing purposes and are approximate. If floor plans are included, they are for guidance only and illustration purposes only and may not be to scale. If there are any important matters likely to affect your decision to buy, please contact us before viewing the property.