



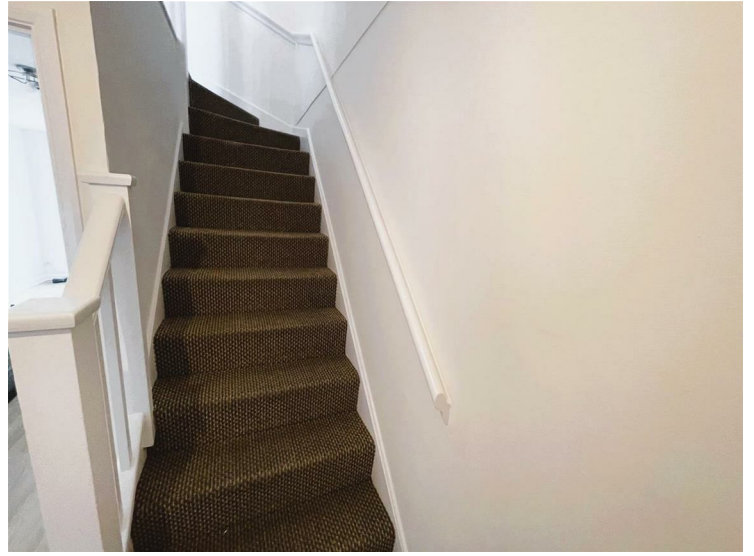
## **Heathfields Court, Hounslow, TW4 5BS**

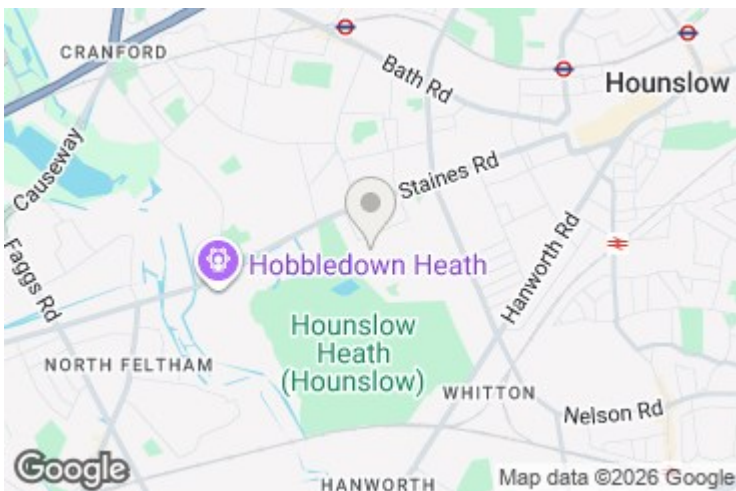
**£1,700 PCM**

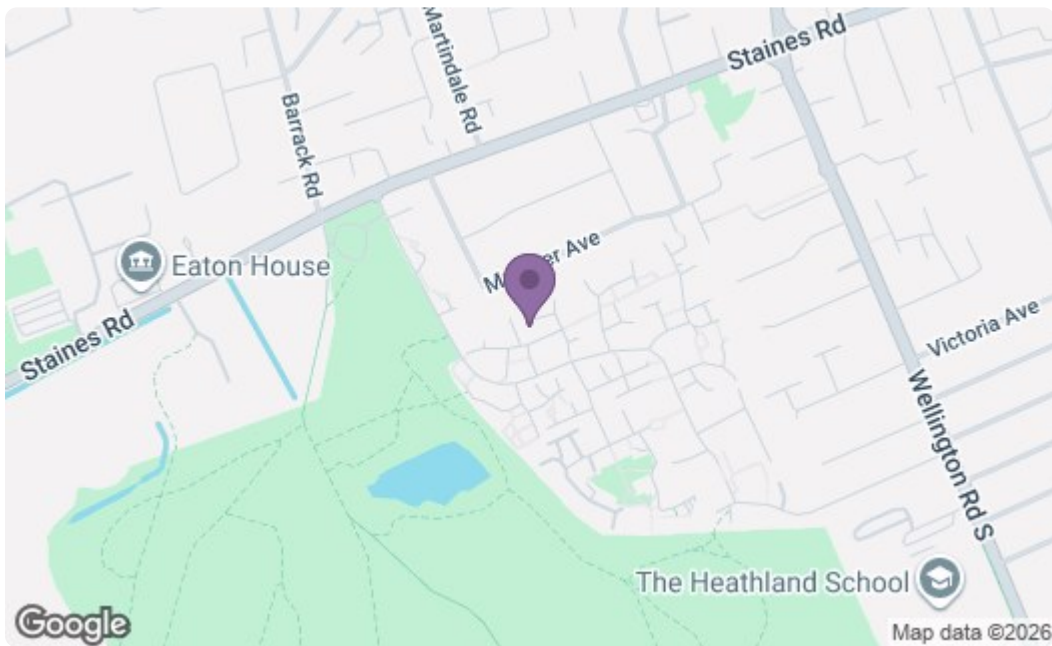
A newly refurbished two-bedroom end-of-terrace home, ideally located in a popular residential area with convenient access to local shops, schools, and transport links. The ground floor offers a lounge/diner and a modern fully fitted kitchen. On the first floor the property comprises two well-proportioned bedrooms and a contemporary bathroom suite. Externally the home benefits from a private rear garden and off-street parking to the front. Offered unfurnished and available immediately, this property is perfect for tenants seeking a well-presented home in a convenient location.



A partner of  
*The Guild Of Professional Estate Agents*  
with a network of over 700 independent estate agents

Associated Office: 121 Park Lane, Mayfair, London W1K 7AG t 020 7318 7075







Energy Efficiency Rating		Current	Potential
Very energy efficient - lower running costs			
(92 plus) <b>A</b>			
(81-91) <b>B</b>			
(69-80) <b>C</b>			
(55-68) <b>D</b>			
(39-54) <b>E</b>			
(21-38) <b>F</b>			
(1-20) <b>G</b>			
Not energy efficient - higher running costs			
<b>England &amp; Wales</b>		EU Directive 2002/91/EC 	
<b>Environmental Impact (CO<sub>2</sub>) Rating</b>		Current	Potential
Very environmentally friendly - lower CO <sub>2</sub> emissions			
(92 plus) <b>A</b>			
(81-91) <b>B</b>			
(69-80) <b>C</b>			
(55-68) <b>D</b>			
(39-54) <b>E</b>			
(21-38) <b>F</b>			
(1-20) <b>G</b>			
Not environmentally friendly - higher CO <sub>2</sub> emissions			
<b>England &amp; Wales</b>		EU Directive 2002/91/EC 	

A partner of  
**The Guild Of Professional Estate Agents**  
 with a network of over 700 independent estate agents

Associated Office: 121 Park Lane, Mayfair, London W1K 7AG t 020 7318 7075