

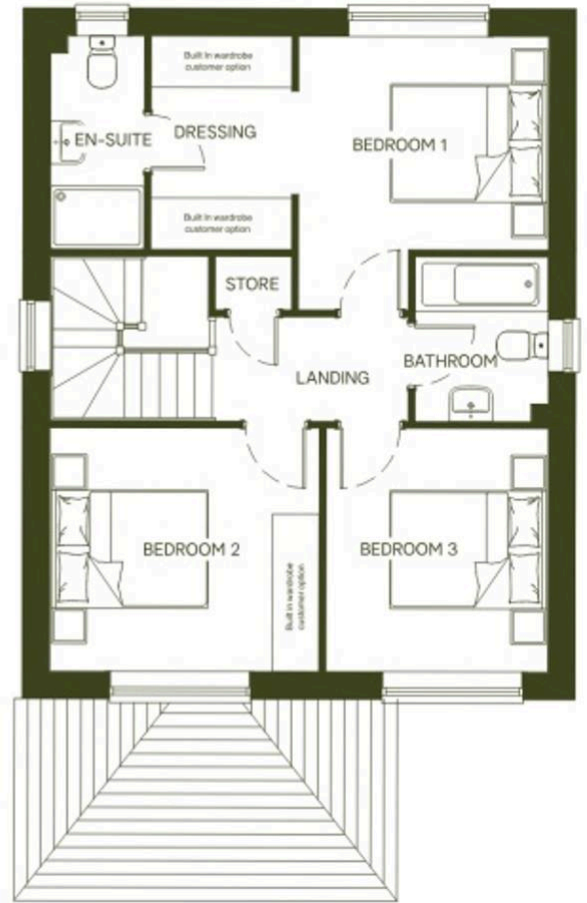
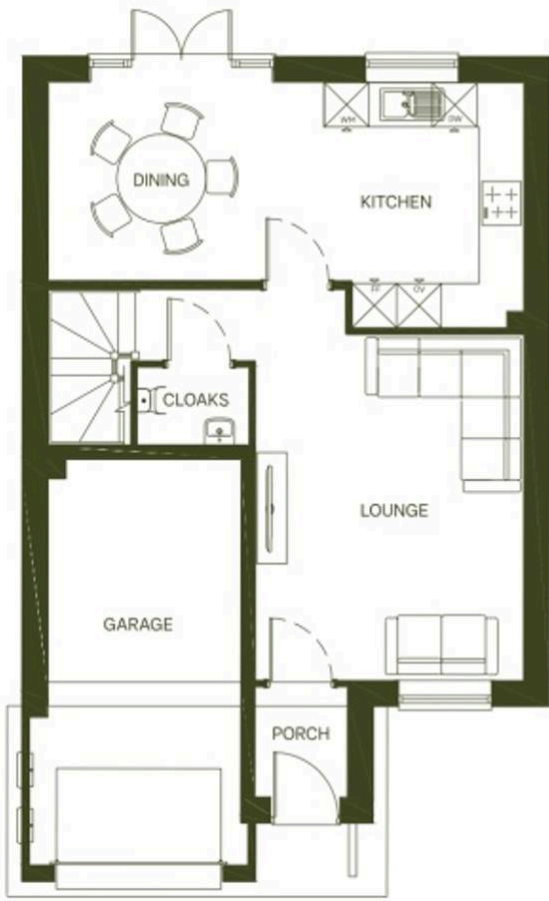


## Plot 12 – Stratford, Wrexham Road, Wrexham – LL12 9DG

£340,000

Presenting a premium opportunity to acquire a stunning three bedroom detached family home, built by the five star rated builders Castle Green. The Stratford offers a contemporary open plan kitchen and dining area, designed to provide both style and practicality for modern living. The spacious main bedroom benefits from a dedicated dressing area and a luxurious en-suite, ensuring comfort and privacy. With an integral garage and off-road parking, convenience is at the forefront of this home's design. The exclusive WILLOW scheme allows you to customise your new home, tailoring the interior to reflect your personal taste. Peace of mind is guaranteed with a 10 year NHBC warranty, and the assurance of purchasing from established, well known developers with a proven track record.

Other house types are also available within the development, with prices ranging from £327,000 to £455,000.



BRITISH  
PROPERTY  
AWARDS

2025

★★★★★

GOLD WINNER

ESTATE AGENT  
IN FLINTSHIRE



BRITISH  
PROPERTY  
AWARDS

2025

★★★★★

GOLD WINNER

ESTATE AGENT  
IN DENBIGHSHIRE

# YOUR FREE PROPERTY REPORT



WE OFFER FREE ADVICE

**MORTGAGES - SURVEYS - SOLICITORS**

