



**22F, KILCREGGAN
VIEW, GREENOCK, PA15 3JD**



 **neillclerk**
ESTATE AGENTS



Description

This rarely available larger style three bedroom TOP FLOOR FLAT offers an ideal rental investment opportunity. Specification includes: partial double glazing and electric heating. Shared rear drying green. Lies convenient for amenities and transport facilities.

Accommodation comprises: Entrance Hallway by UPVC double glazed door with three inbuilt cupboards. There is a bright Lounge with window to the front offering partial views beyond surrounding properties towards the River Clyde.

The rear facing Kitchen white fitted units and blue/black marble style work surface areas.

There are three double sized Bedrooms. The 1st and 3rd bedrooms benefit from storage. The Bathroom with rear window has a three piece suite offering: pedestal wash hand basin, wc and bath with "Bristan" shower plus wet wall panelling.

Viewing is highly recommended for this affordable three bedroom home.
EPC = D.

Measurements

Hallway

Lounge
3.63m x 5.05m (11'11 x 16'7)

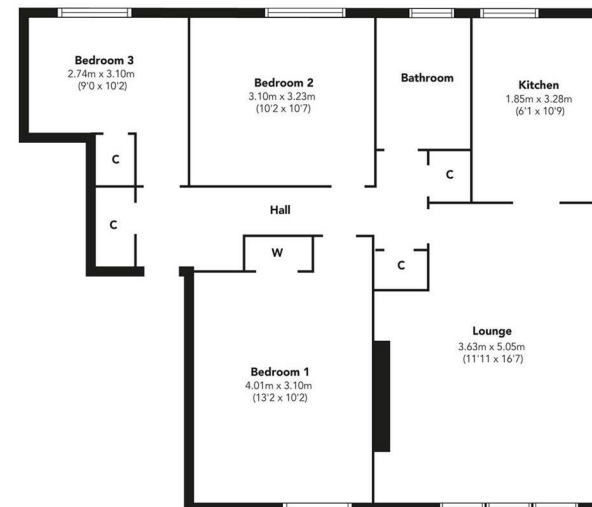
Kitchen
1.85m x 3.28m (6'1 x 10'9)

Bedroom 1
4.01m x 3.10m (13'2 x 10'2)

Bedroom 2
3.10m x 3.23m (10'2 x 10'7)

Bedroom 3
2.74m x 3.10m (9'0 x 10'2)

Bathroom



Floorplans are indicative only - not to scale
Produced by Plushplans 











The
next
step..



To view call 01475 888400. Speak to us 7 days a week until 11pm every day to book your viewing appointment.

House to sell or rent?

Call 01475 888400 to book your free market appraisal.

Require a solicitor?

Ask us to supply a free legal quotation from Neill Clerk & Murray, Solicitors.
www.neillclerkmurray.co.uk

Stay fully up-to-date by following Neill Clerk on:



**60 West Blackhall Street
Greenock
Renfrewshire
PA15 1UY**

t: 01475 888400

e: sales@neillclerk.co.uk

w: www.neillclerk.co.uk



Agents Notes:

These sales particulars are set out as a general outline only, issued in good faith, but do not constitute representations of fact and do not form part of any offer or contract. Any services, equipment, appliances, fittings or central heating systems have not been tested and no warranty is given or implied that these are in working order. All measurements are approximate and for guidance only.

Neither Neill Clerk Estate Agents nor any of its employees or agents has any authority to make or give any representation or warranty whatever in relation to this property.

Find all our properties at: [rightmove](https://www.rightmove.co.uk) [Zoopla](https://www.zoopla.co.uk) [onTheMarket.com](https://www.onthemarket.com) [s1homes.com](https://www.s1homes.com)