



Estcourt Terrace, Leeds LS6 3EX

welcome to

Estcourt Terrace, Leeds

This mid-terrace property offers versatile living across four floors, including a basement. Featuring six well-proportioned bedrooms, it presents excellent potential throughout—ideal for large families or investors. With a welcoming yard to the front.



Basement

The basement offers a generous and flexible space with excellent potential. Could be adapted to suit a variety of needs—such as a home office, gym, playroom, or additional living area.

Ground Floor

Lounge

16' 5" x 13' (5.00m x 3.96m)

Lounge with large window to the front, carpeted throughout.

Kitchen

14' 4" x 9' 2" (4.37m x 2.79m)

Kitchen with fully fitted wall and base units, integrated appliances, window to the side, door to the rear, laminate flooring throughout.

Bedroom One

15' 2" x 11' MAX (4.62m x 3.35m MAX)

Built in furniture, carpeted throughout, window to the rear.

Shower Room

Shower room incorporating a walk in shower, washing hand basin, W/C.

First Floor

W/C

Additional W/C.

Shower Room

Shower room incorporating a walk in shower, washing hand basin, W/C.

Bedroom Two

13' 2" x 8' 2" MAX (4.01m x 2.49m MAX)

Built in furniture, carpeted throughout, window to the front.

Bedroom Three

11' 4" x 11' 10" MAX (3.45m x 3.61m MAX)

Built in furniture, carpeted throughout, window to the rear.

Bedroom Four

13' 1" x 9' 8" MAX (3.99m x 2.95m MAX)

Built in furniture, carpeted throughout, window to the front.

W/C

First floor W/C with washing hand basin.

Second Floor

Bedroom Five

16' x 13' 2" (4.88m x 4.01m)

Carpeted throughout, window to the front, built in storage.

Bedroom Six

11' 8" x 10' 2" (3.56m x 3.10m)

Carpeted throughout, window to the rear, built in storage.

W/C

Second floor W/C with washing hand basin.



view this property online williamhbrown.co.uk/Property/HEA109320



welcome to

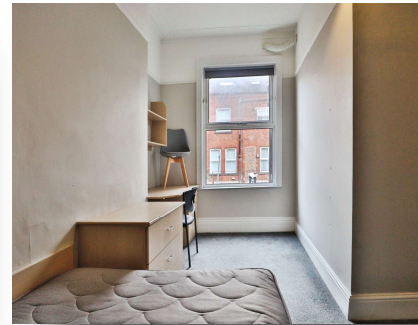
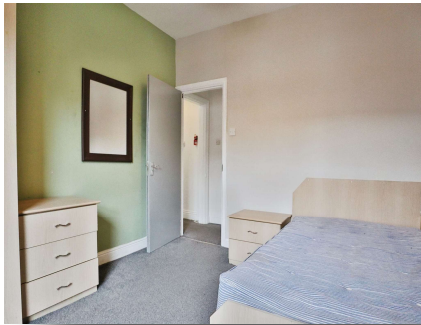
Estcourt Terrace, Leeds

- GUIDE PRICE £300,000-£325,000
- MID-TERRACE SIX BEDROOM PROPERTY WITH CHARACTER FEATURES
- FOUR FLOORS INCLUDING BASEMENT
- TWO SHOWER ROOMS
- FRONT YARD OFFERING CURB APPEAL

Tenure: Freehold EPC Rating: D
Council Tax Band: C

guide price

£300,000



Please note the marker reflects the
postcode not the actual property

view this property online williamhbrown.co.uk/Property/HEA109320



Property Ref:
HEA109320 - 0006

1. MONEY LAUNDERING REGULATIONS Intending purchasers will be asked to produce identification documentation at a later stage and we would ask for your co-operation in order that there is no delay in agreeing the sale. 2. These particulars do not constitute part or all of an offer or contract. 3. The measurements indicated are supplied for guidance only and as such must be considered incorrect. Potential buyers are advised to recheck measurements before committing to any expense. 4. We have not tested any apparatus, equipment, fixtures or services and it is in the buyers interest to check the working condition of any appliances. 5. Where an EPC, or a Home Report (Scotland only) is held for this property, it is available for inspection at the branch by appointment. If you require a printed version of a Home Report, you will need to pay a reasonable production charge reflecting printing and other costs. 6. We are not able to offer an opinion either written or verbal on the content of these reports and this must be obtained from your legal representative. 7. Whilst we take care in preparing these reports, a buyer should ensure that his/her legal representative confirms as soon as possible all matters relating to title including the extent and boundaries of the property and other important matters before exchange of contracts.

William H Brown is a trading name of Sequence (UK) Limited which is registered in England and Wales under company number 4268443, Registered Office is Cumbria House, 16-20 Hockliffe Street, Leighton Buzzard, Bedfordshire, LU7 1GN. VAT Registration Number is 500 2481 05.

 **william h brown**



0113 278 5337



Headingley@williamhbrown.co.uk



1a Arndale Centre, Otley Road, LEEDS, West
Yorkshire, LS6 2UE



williamhbrown.co.uk