



4 Tintern Avenue, Bolton  
£1,100 pcm

**Miller Metcalfe**  
*Every step of the way*

## 4 Tintern Avenue

Bolton

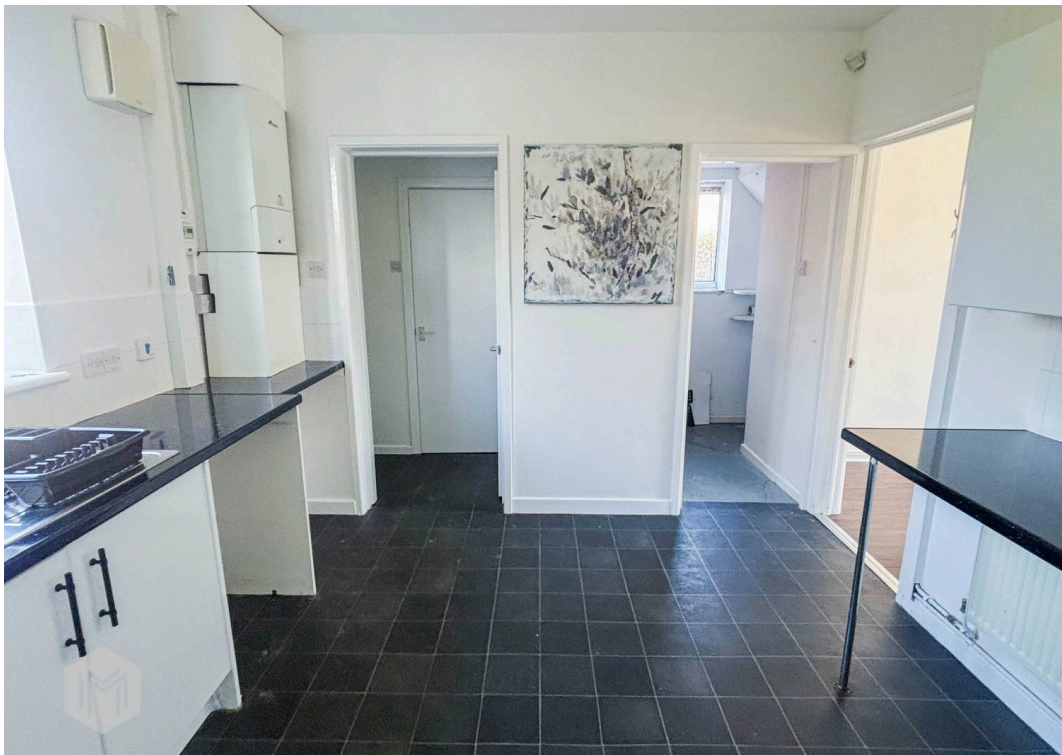
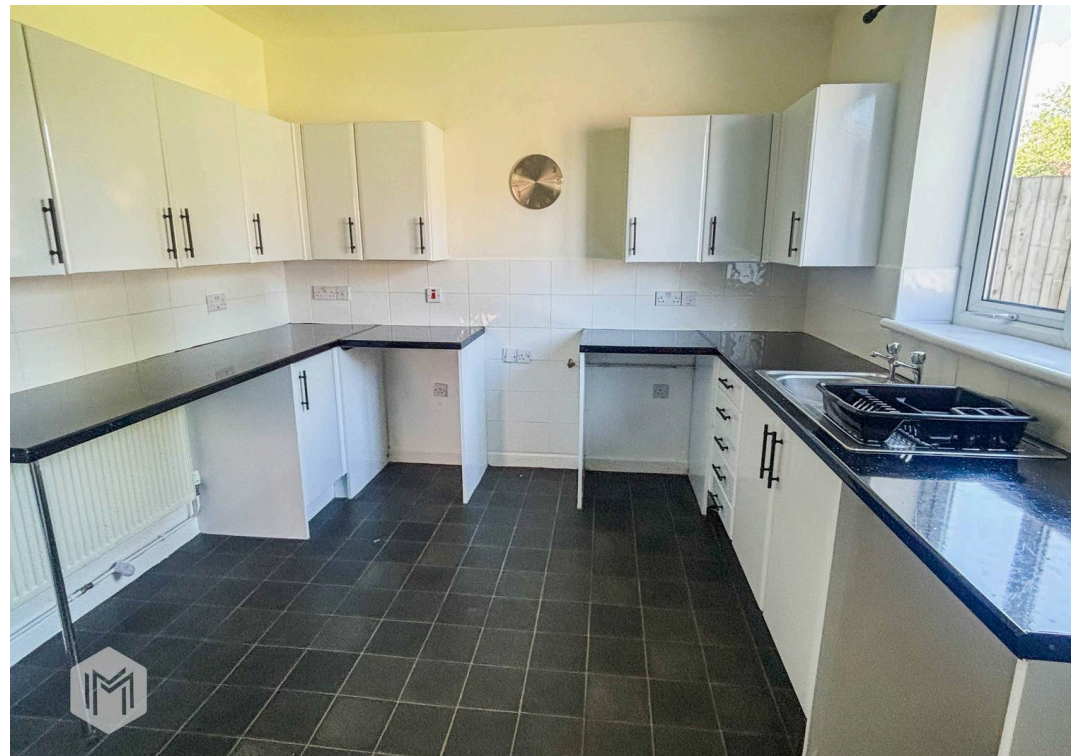
This good sized family home presents an excellent opportunity for buyers seeking a well-proportioned property in a popular location. Upon entering, you are greeted by a welcoming hallway that leads into a spacious lounge, ideal for family relaxation or entertaining guests. The kitchen/ dining room are thoughtfully arranged to provide both practicality and a sociable atmosphere, with ample space for dining and modern appliances designed to meet the needs of a busy household. The layout of the home is well considered, offering a seamless flow between living areas, which contributes to a comfortable and versatile environment for day-to-day living. The bedrooms are generously sized, providing plenty of room for family members or guests, while the family bathroom is finished with a three piece suite ensuring both comfort and convenience. Additional features include a driveway that provides off road parking, a valuable asset for families with multiple vehicles or those who regularly host visitors. The property is situated in a sought-after area, known for its friendly community and close proximity to local amenities, including reputable schools, shops, and transport links, making it particularly appealing to families and professionals alike. The interior is well maintained and decorated in neutral tones, allowing for personalisation to suit individual tastes. Storage solutions are thoughtfully integrated throughout the home, ensuring a clutter-free living space. This property combines generous proportions with a practical layout, making it an ideal choice for those looking to settle in a desirable neighbourhood. The overall presentation is both welcoming and functional, reflecting the care and attention given by the current owners. Viewing is highly recommended to appreciate the full potential and charm of this lovely family home. Whether you are upsizing, relocating, or seeking your first family property, this residence offers a blend of comfort, convenience, and style that is sure to impress. With its combination of attractive features, prime location, and practical benefits, this property stands out as a superb option for discerning buyers in today's market. Early enquiries are encouraged to avoid disappointment, as homes of this calibre in such a popular area are rarely available for long. Please contact our office for further information or to arrange a viewing at your earliest convenience.

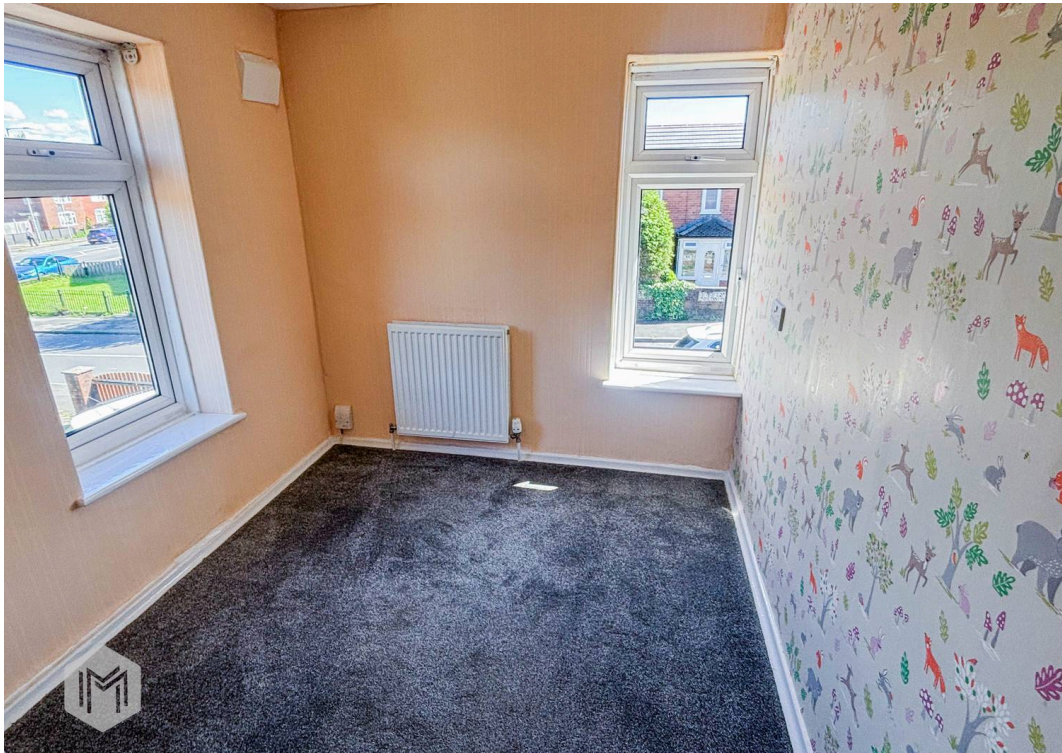
Council Tax band: TBD

EPC Energy Efficiency Rating: D

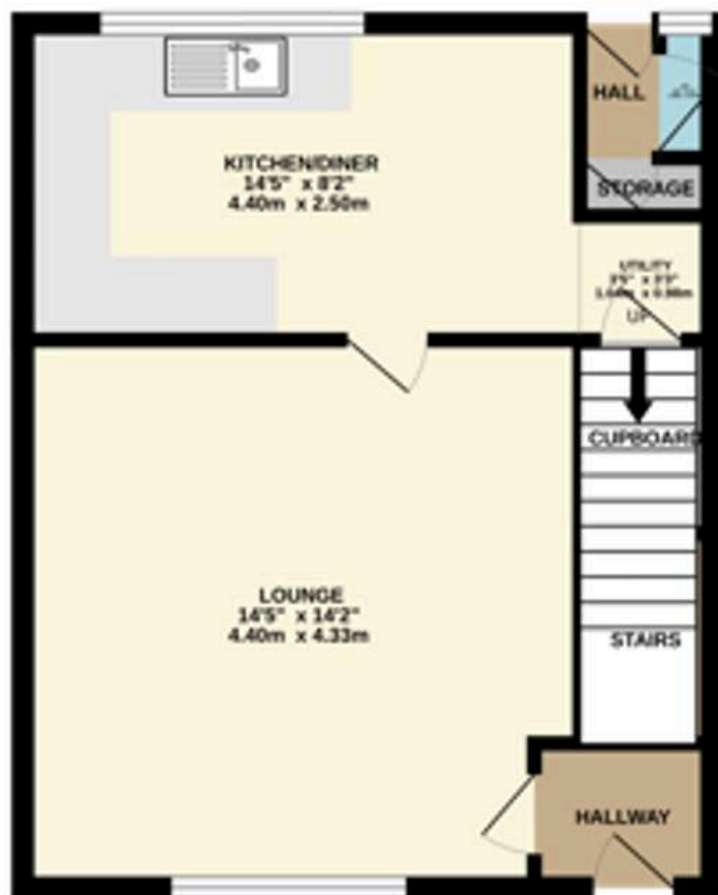
EPC Environmental Impact Rating: E







GROUND FLOOR



1ST FLOOR

