

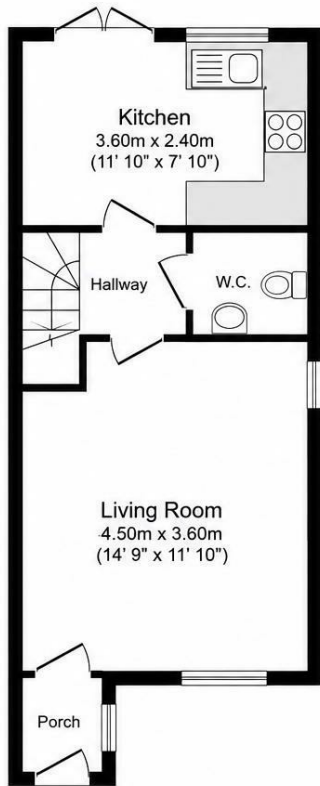


## 10 LEE ROAD NORTHAMPTON, NN5 6WP

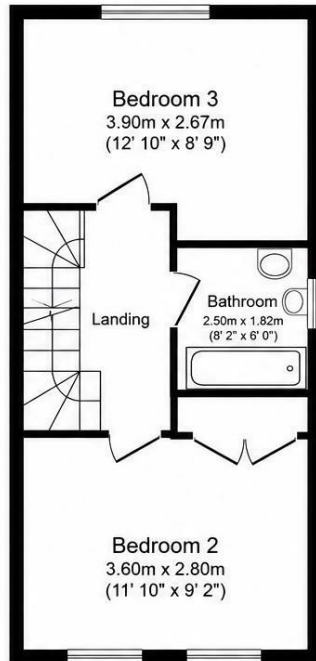
**£265,000**  
**FREEHOLD**

Stonhills are pleased to offer this well presented three bedroom three storey mid terrace home situated on Lee Road, close to Harlestone Firs. The accommodation comprises entrance hall, lounge, kitchen/dining room, WC, two bedrooms and a family bathroom on the first floor, with bedroom one and ensuite occupying the top floor. Outside there is an enclosed rear garden and off road parking. Conveniently located close to local amenities, schools, Northampton train station and offering excellent access to the A45 and M1 motorway. Viewing advised.

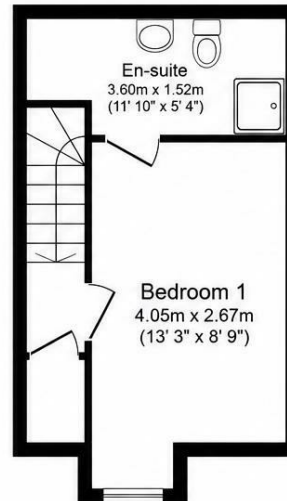




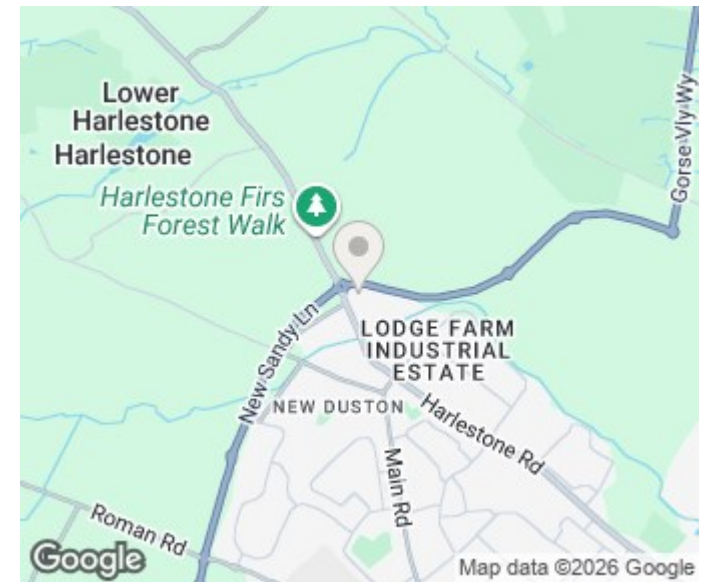
**Ground Floor**



**First Floor**



**Second Floor**



Energy Efficiency Rating		Current	Potential
Very energy efficient - lower running costs			
(92 plus) <b>A</b>			
(81-91) <b>B</b>			
(69-80) <b>C</b>			
(55-68) <b>D</b>			
(39-54) <b>E</b>			
(21-38) <b>F</b>			
(1-20) <b>G</b>			
Not energy efficient - higher running costs			
<b>England &amp; Wales</b>		EU Directive 2002/91/EC	

Agents Note: Whilst every care has been taken to prepare these particulars, they are for guidance purposes only. All measurements are approximate and are for general guidance purposes only and whilst every care has been taken to ensure their accuracy, they should not be relied upon and potential buyers/tenants are advised to recheck the measurements

Northampton Office Sales  
39 St Giles Street  
Northampton  
Northamptonshire  
NN1 1JF

01604 624424  
lewis@stonhills.co.uk  
<https://www.stonhills.co.uk/>

