

**2 Bed
Apartment
located in Calico Building**

AiHOMES.

46 Whitworth Street, Calico Building, MANCHESTER



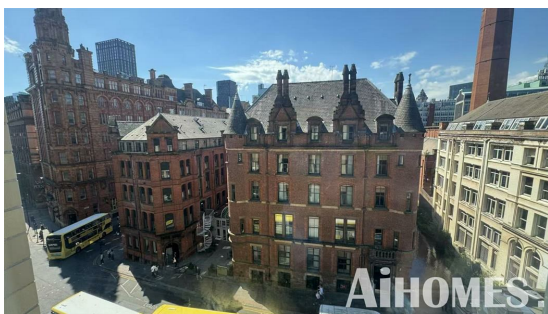
£2,000 Per Month

Welcome to this modern apartment located at 46 Whitworth Street in the Calico Building, Manchester. This stylish residence, built in 2021, offers a contemporary living experience in one of the city's most vibrant areas. Spanning an impressive 807 square feet, the apartment features a well-designed layout that maximises space and comfort.

Upon entering, you are greeted by a spacious reception room, perfect for entertaining guests or enjoying a quiet evening at home. The apartment boasts two generously sized bedrooms, providing ample space for relaxation and privacy. Each bedroom is complemented by its own bathroom, ensuring convenience and comfort for both residents and visitors.

The Calico Building is known for its modern architecture and prime location, placing you within easy reach of Manchester's bustling city centre. Here, you can enjoy a variety of shops, restaurants, and cultural attractions, making it an ideal choice for those who appreciate urban living.

This apartment is perfect for professionals, couples, or small families seeking a stylish and convenient home in Manchester. With its contemporary design and prime location, this property is not to be missed. Come and experience the best of city living in this exceptional apartment.

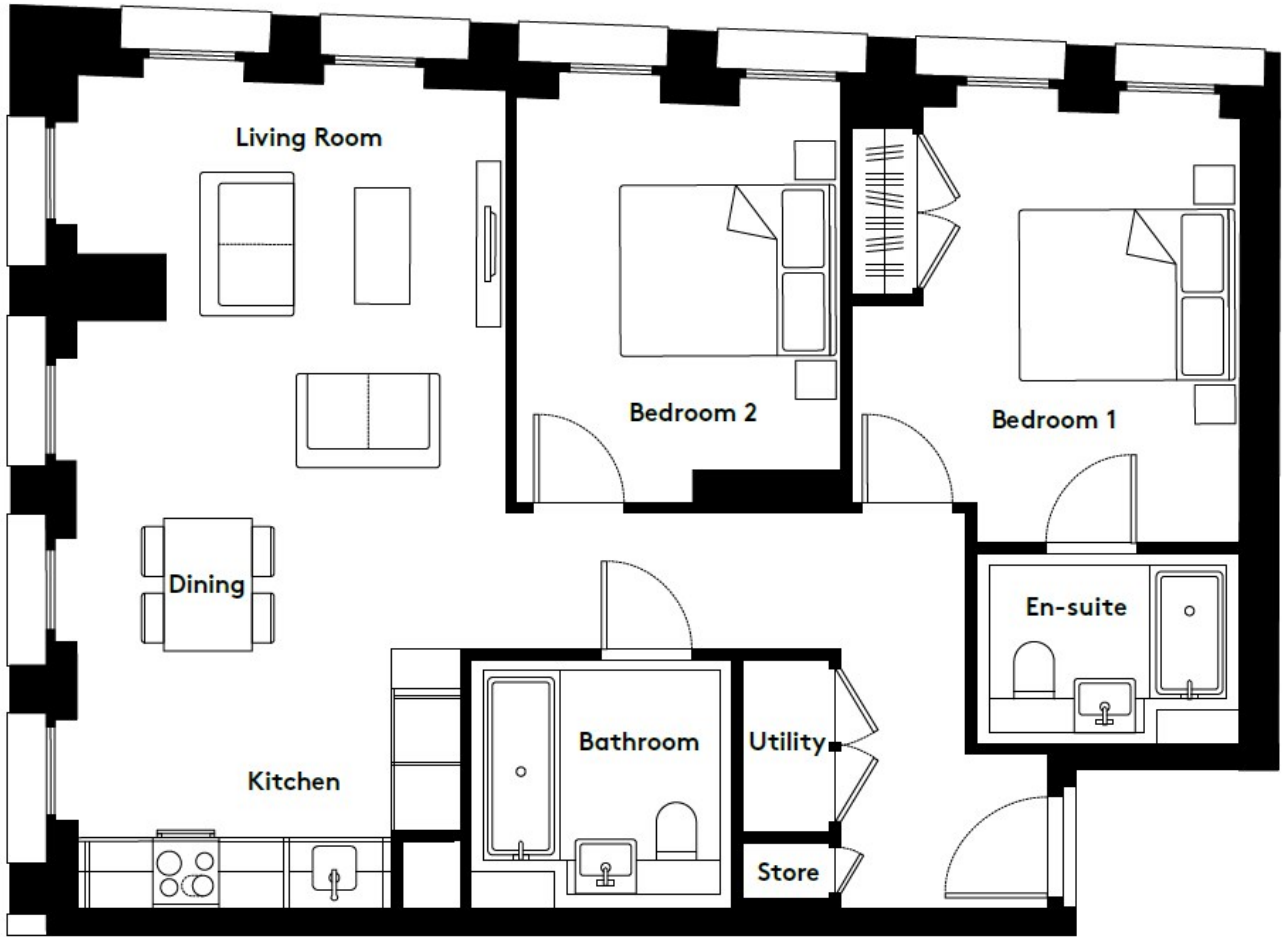







46 Whitworth Street, Calico Building, MANCHESTER





Energy Efficiency Rating		
	Current	Potential
<i>Very energy efficient - lower running costs</i>		
(92 plus) A		
(81-91) B		
(69-80) C	80	
(55-68) D		
(39-54) E		
(21-38) F		
(1-20) G		
<i>Not energy efficient - higher running costs</i>		
England & Wales	EU Directive 2002/91/EC	

EPC Rating: C
Council Tax Band: E

CONTACT

5th floor, Empress Business Center
 380 Chester Road
 Manchester
 M16 9EA

E: info@aihomes.uk

T: 0127 332 8069

AiHOMES.