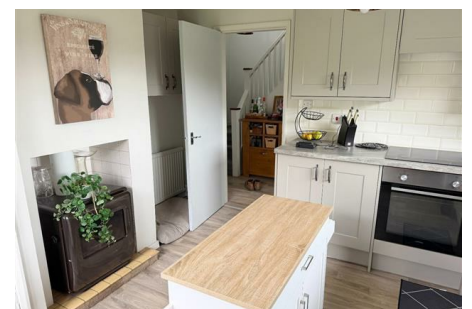


Rounthwaite **R&W** Woodhead

53 MARKET PLACE, MALTON, NORTH YORKSHIRE, YO17 7LX Tel: (01653) 600747

WATERDALE END COTTAGE THIXENDALE, MALTON, YO17 9TG



- Well presented Three bedroom property
- Beautiful village setting with spacious garden

£1,100 PER MONTH

Also at: 26 Market Place, Kirkbymoorside Tel: (01751) 430034 & Market Place, Pickering Tel: (01751) 472800

Email: malton@rounthwaite-woodhead.co.uk www.rounthwaite-woodhead.com

Description

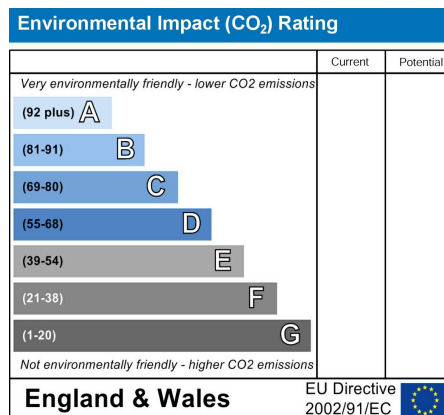
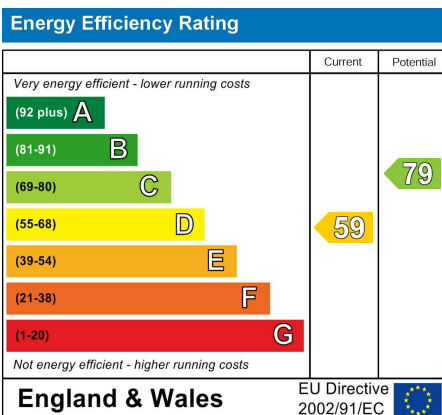
A well-presented three-bedroom semi-detached home enjoying a delightful position adjoining open fields within the picturesque Thixendale Valley. The accommodation comprises a well-equipped kitchen, cloakroom and a spacious dining/sitting room with open fire. To the first floor are three bedrooms and a shower room.

Externally, the property benefits from attractive enclosed gardens to both the front and rear, a useful timber shed and driveway parking for several vehicles. Oil-fired central heating. A lovely rural home in an enviable countryside setting.

General Information



Accommodation





Messrs Rounthwaite & Woodhead for themselves and their vendors and lessors whose agents they are give notice that these particulars are produced in good faith, set out as a general guide only and do not constitute any part of a contract. No person employed by Messrs Rounthwaite & Woodhead has any authority to make or give any representation or warranty whatsoever in relation to this property. The dimensions in the sales particulars are approximate only and the accuracy of any description cannot be guaranteed. Reference to machinery, services and electrical goods does not indicate that they are in good or working order. All reference to prices and rents etc. exclude VAT which may apply in some cases.

Covering Ryedale through offices in Malton, Pickering and Kirkbymoorside
www.rounthwaite-woodhead.com

Rounthwaite **R&W** Woodhead