

null
BED

Freehold with Planning Permission
Mayfield Court, Lustrells Vale, Brighton, BN2 8FY

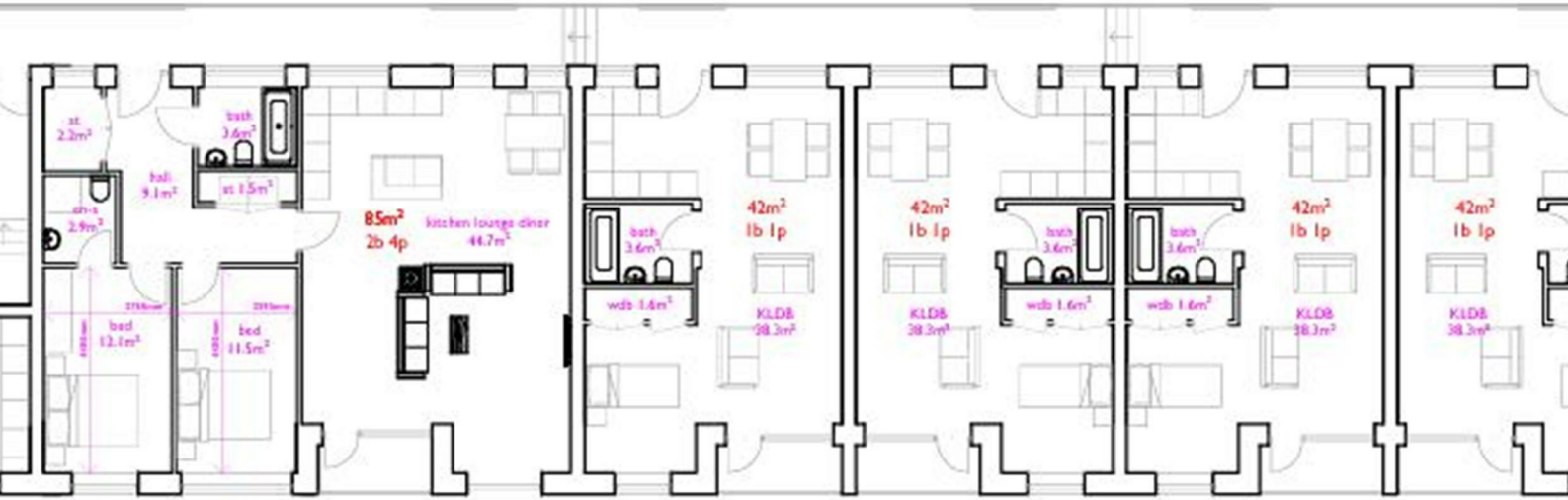


Offers Over £200,000

Freehold

phillipmann
we do more

www.phillipmann.com



new additional third floor layout - scale 1:250 at A3

Scale in Metres



inbrief...

A superb opportunity to acquire the Freehold of this building with Prior Approval Approved for 9 Third Floor Apartments.

Situated in this unrivalled position on this bustling street in Saltdean, with a good range of mixed residential and commercial buildings. The apartments are within easy reach of the local schools, bus routes to Brighton and Saltdean beach and other amenities.

The property is currently arranged as 30 residential flats which all have long leases. All apartments are on 999 year leases which were issued in 1968 and have a combined annual ground rent commanding £1642.

The Prior Approval permission includes creating a third floor, where there will be 1 x Two Bedroom Apartment, 4 x One Bedroom Apartment and 4 x Studio Apartments.

Please call for further information



levation (front) - scale 1:250 at A3

Scale
0



levation (rear) - scale 1:250 at A3

Scale in
0

EPC Rating - NA
Council Tax Band -
NA

moreinfo...

Phillip Mann Peacehaven Office
226-230 South Coast Road, Peacehaven, BN10 8JR
01273 586622



To see more details on this & all our homes go to
www.phillipmann.com