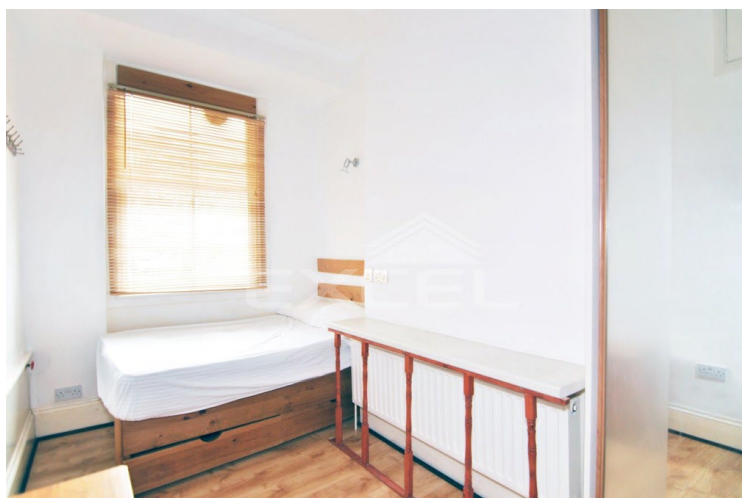


GOLDHURST TERRACE, SOUTH HAMPSTEAD, LONDON NW6 3HB



£390 PW

[£1,690 PCM] (FEES APPLY)

1 BEDROOM(S)

AVAILABLE: 12TH JUNE 2022

Available for long term rental inclusive of utility bills this first floor 1-bedroom apartment set within an imposing three storey red brick building located in the heart of South Hampstead, an area well served by transport links and the shopping facilities of Finchley Road. EPC: D

- Imposing red brick conversion
- South Hampstead location
- 1st floor apartment
- Wood strip flooring
- Bright reception room
- Open plan fitted kitchen
- Rear facing double bedroom
- Period features; high ceilings
- Bathroom/WC
- Inclusive of utility bills

T: 020 7691 9000

E: info@excel-property.co.uk

W: www.excel-property.co.uk

JP: www.excel-property.london/JP

A: 146 Finchley Road, London, NW3 5HS

