



Cleaveland Road, KT6

£800,000

Dexters



Cleaveland Road, KT6

A beautifully presented Victorian cottage located on one of Surbiton's most sought after River Roads. This spacious, two reception, two double bedroom home is just minutes from the pubs and restaurants on Maple Road, Surbiton mainline station, the River Thames, and the popular Farmer's Market.

On the ground floor there is a lovely, bright front reception room, with period fireplace, a dining room with original coving and a smart integrated kitchen. On the first floor there are two good size double bedrooms and a large luxurious four piece bathroom.

To the rear of the property there is a smart south west facing courtyard garden and to the front is further outside space set behind a picket fence.

Cleaveland Road is one of Surbiton's premier river roads with everything you need on your doorstep, including the river, the desirable Maple Road, Surbiton's popular high street and the mainline train station with it's fast links into London.

Features

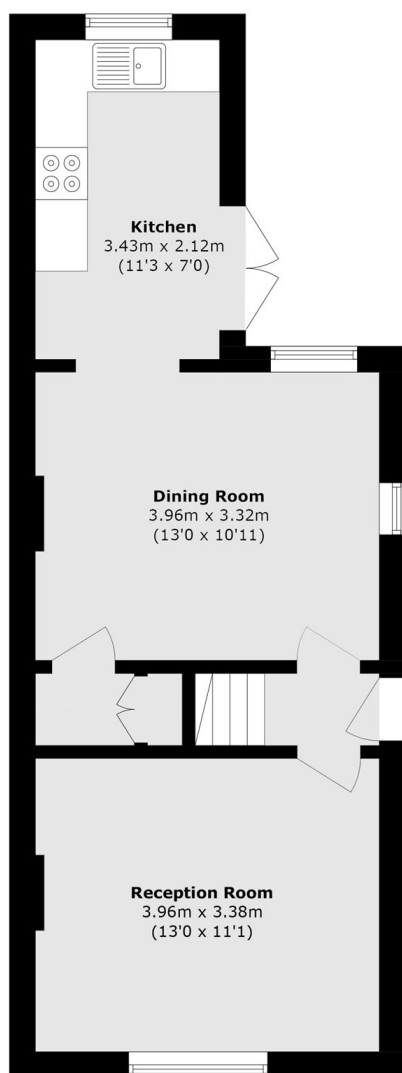
- Period Home
- River Road
- Two Double Bedrooms
- Beautifully Presented
- South West Facing Garden



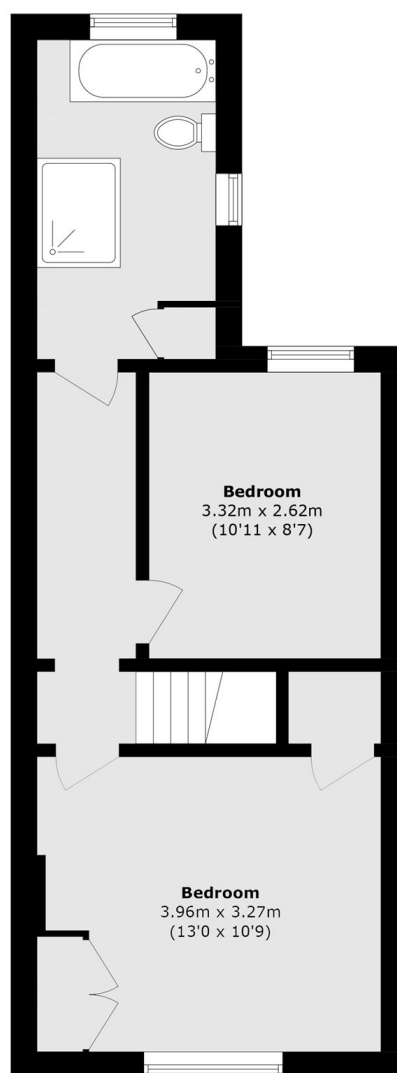




Cleaveland Road, Surbiton, KT6



Ground Floor



First Floor

Total area (approx.): 78.0 sq. m (839.6 sq. ft)