



Roseberry Place, E8

£780,000

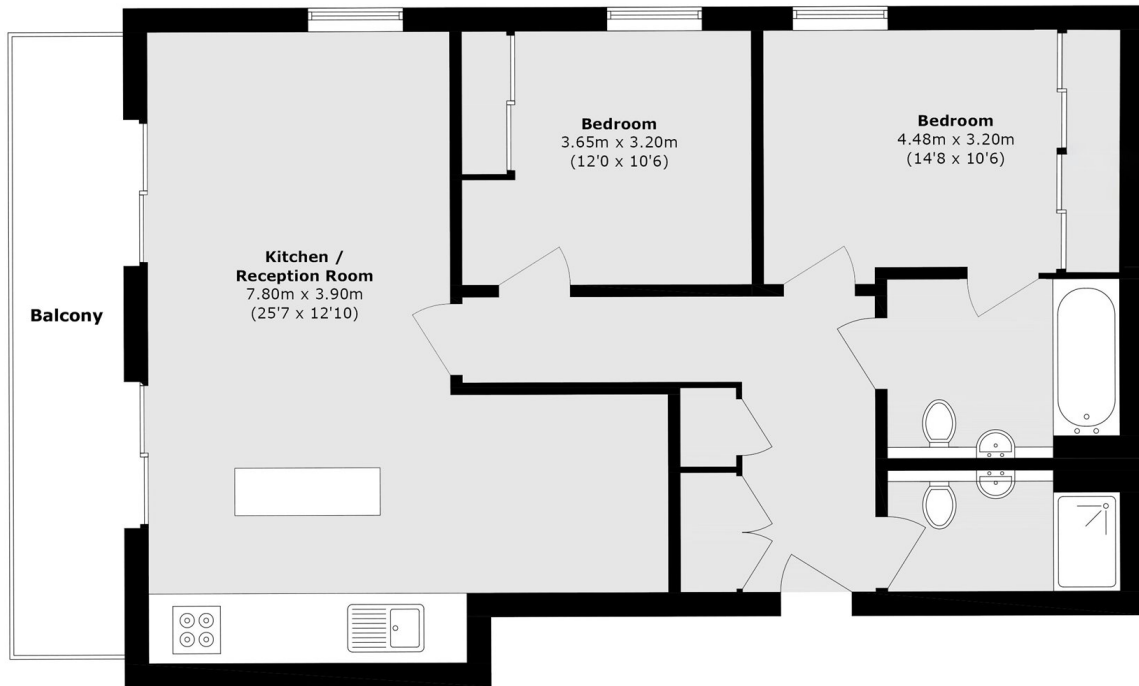
A two bedroom, two bathroom apartment, measuring in excess of 969 sq ft. Located within a secure, modern building, this property has floor-to-ceiling windows, a full-width, south facing balcony and an open-plan kitchen & living area, complete with an island & integrated appliances.

The property is less than quarter of a mile to Dalston Junction station, making it perfectly placed for access to Shoreditch, Islington and the City and the area's many shops, bars, cafés and restaurants are on your doorstep.

Features

- 2 Bedroom
- 2 Bathroom
- Balcony
- South Facing
- Secure Block
- 969+ sq ft

Roseberry Place, London, E8



Total area (approx.): 90.1 sq. m (969.8 sq. ft)
Balcony area (approx.): 1.1 sq. m (11.8 sq. ft)