



Finnart Close, Weybridge, KT13 8QE





Presented in excellent order throughout, a two bedroom end of terrace house, located in the heart of central Weybridge within a short walk of the high Street.

The property has been extended to the rear adding extra space to the sitting room with doors opening onto a private garden. There is also a recently fitted kitchen.

Upstairs the master bedroom is situated at the back of the house overlooking the rear garden. The second bedroom has built in storage and the family bathroom is fitted with a white suite with a shower over the bath and part tiled walls.

Outside there is a south westerly aspect rear garden with patio and lawn areas and side access to the front of the property. There is also two allocated parking spaces.





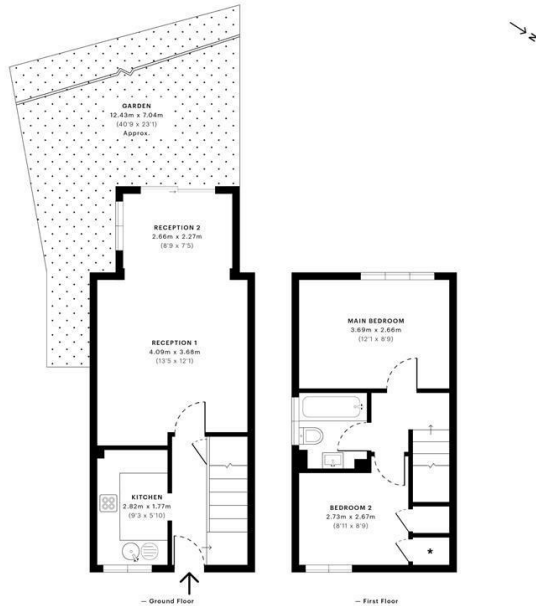


## Finnart Close, KT13

CAPTURE DATE: 22/02/2020 LASER SCAN POINTS: 30,503,117

GROSS INTERNAL AREA

56.69 sqm / 610.21 sqft



GROSS INTERNAL AREA (GIA) Net floor area of the property. 56.69 sqm / 610.21 sqft	NET INTERNAL AREA (NIA) Includes walls and internal fixtures. 32.99 sqm / 370.38 sqft	EXTERNAL STRUCTURAL FEATURES Balconies, terraces, etc. 0.00 sqm / 0.00 sqft	RESTRICTED HEAD HEIGHT Rooms are under 1.9m. 0.00 sqm / 0.00 sqft
---	---	---	---



Spec Verified floor plans are produced in accordance with Royal Institution of Chartered Surveyors' Property Measurement Standards. Plans and gardens are illustrative only and excluded from all area calculations. Due to rounding, numbers may not add up precisely. All measurements shown for the individual room lengths and widths are the maximum points of measurements captured in the scan.

IPMS 3B RESIDENTIAL: 55.53 sqm / 597.72 sqft  
IPMS 3C RESIDENTIAL: 53.80 sqm / 579.95 sqft  
\*Excluded from measurements  
url: w/ 6020c048ef6c5f0ed004f0ee5

EPC Rating: 66 D



Grants Homes 60 Church Street, Weybridge, Surrey, KT13 8DL  
T: 01932 841020 E: [lettings@grantshomes.co.uk](mailto:lettings@grantshomes.co.uk)

