





226 Railway Road

Rhoose, Barry

Immaculate four-bed detached home with large kitchen/diner, en-suite, landscaped garden, garage, parking, top schools catchment, and excellent transport links. Turn-key ready. EPC B84.

Council Tax band: F

Tenure: Freehold

EPC Energy Efficiency Rating: B

EPC Environmental Impact Rating: B

- FOUR BEDROOM, DETACHED FAMILY HOME
- BEAUTIFULLY PRESENTED THROUGHOUT
- CLOSE PROXIMITY TO TRAVEL LINKS AND PRIMARY SCHOOL
- LARGE KITCHEN/ DINER
- COWBRIDGE COMPREHENSIVE CATCHMENT
- TURN KEY READY
- EPC RATING B84
- LANDSCAPED REAR GARDEN
- PARKING FOR 2 VEHICLES PLUS GARAGE WITH POWER AND LIGHTING
- EV CHARGER INSTALLED





Entrance hallway

Living Room

14' 9" x 11' 11" (4.49m x 3.63m)

WC

5' 11" x 4' 1" (1.81m x 1.24m)

Kitchen/ Diner

18' 8" x 11' 0" (5.69m x 3.36m)

Utility Room

5' 7" x 4' 0" (1.69m x 1.23m)

Landing

Bedroom One

13' 11" x 8' 6" (4.24m x 2.59m)

En-suite

6' 7" x 4' 0" (2.01m x 1.22m)

Bedroom Two

9' 3" x 9' 2" (2.83m x 2.80m)

Bedroom Three

7' 10" x 9' 3" (2.38m x 2.81m)

Bedroom Four

7' 3" x 7' 9" (2.20m x 2.35m)

Bathroom

6' 8" x 5' 7" (2.03m x 1.71m)





Entrance hallway

Living Room

14' 9" x 11' 11" (4.49m x 3.63m)

WC

5' 11" x 4' 1" (1.81m x 1.24m)

Kitchen/ Diner

18' 8" x 11' 0" (5.69m x 3.36m)

Utility Room

5' 7" x 4' 0" (1.69m x 1.23m)

Landing

Bedroom One

13' 11" x 8' 6" (4.24m x 2.59m)

En-suite

6' 7" x 4' 0" (2.01m x 1.22m)

Bedroom Two

9' 3" x 9' 2" (2.83m x 2.80m)

Bedroom Three

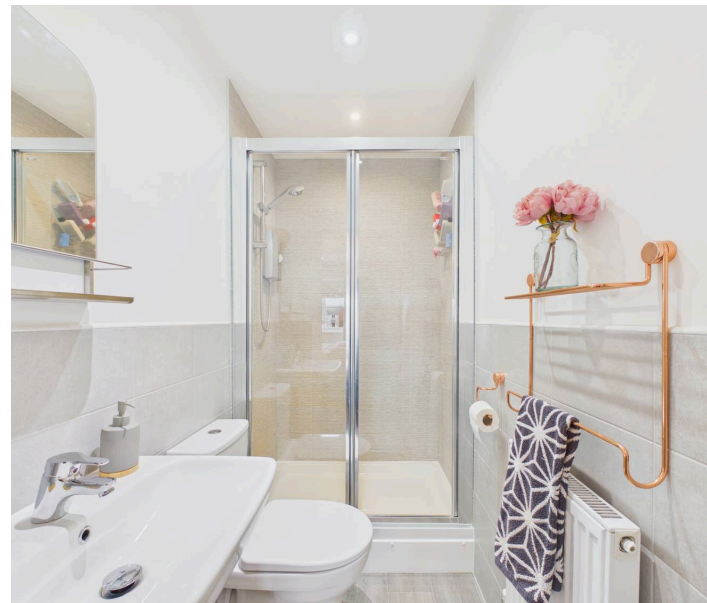
7' 10" x 9' 3" (2.38m x 2.81m)

Bedroom Four

7' 3" x 7' 9" (2.20m x 2.35m)

Bathroom

6' 8" x 5' 7" (2.03m x 1.71m)





Entrance hallway

Living Room

14' 9" x 11' 11" (4.49m x 3.63m)

WC

5' 11" x 4' 1" (1.81m x 1.24m)

Kitchen/ Diner

18' 8" x 11' 0" (5.69m x 3.36m)

Utility Room

5' 7" x 4' 0" (1.69m x 1.23m)

Landing

Bedroom One

13' 11" x 8' 6" (4.24m x 2.59m)

En-suite

6' 7" x 4' 0" (2.01m x 1.22m)

Bedroom Two

9' 3" x 9' 2" (2.83m x 2.80m)

Bedroom Three

7' 10" x 9' 3" (2.38m x 2.81m)

Bedroom Four

7' 3" x 7' 9" (2.20m x 2.35m)

Bathroom

6' 8" x 5' 7" (2.03m x 1.71m)





GARDEN

DRIVEWAY

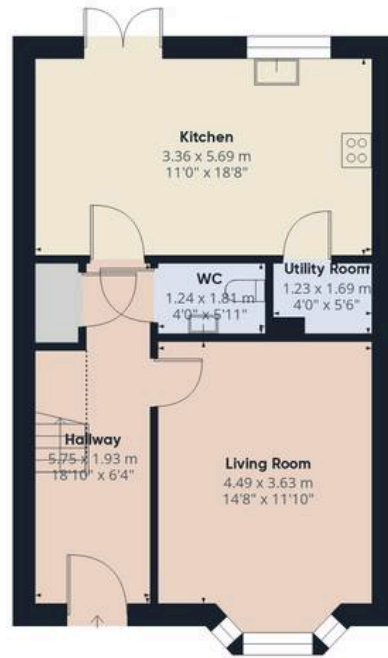
2 Parking Spaces

GARAGE

Single Garage

With power and lighting





Ground Floor

Approximate total area⁽¹⁾

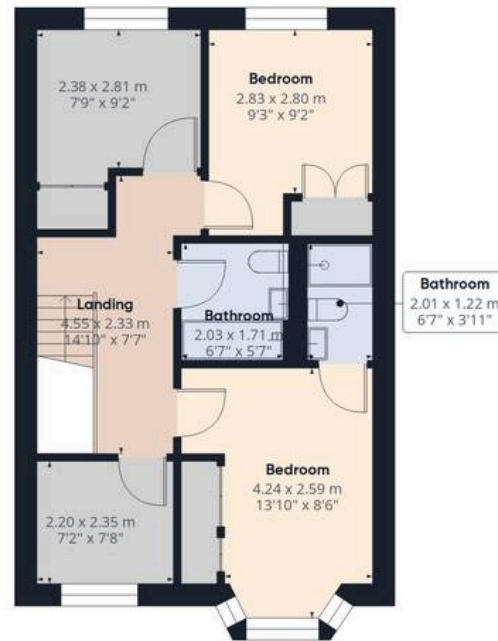
101.1 m²

1091 ft²

Reduced headroom

1.6 m²

18 ft²



First Floor

(1) Excluding balconies and terraces

Reduced headroom

..... Below 1.5 m/5 ft

Calculations reference the RICS IPMS 3C standard. Measurements are approximate and not to scale. This floor plan is intended for illustration only.

GIRAFFE360





Chris Davies Estate Agents

Chris Davies Estate Agents, 29 Fontygary Road - CF62 3DS

01446 711900

rhoose@chris-davies.co.uk

www.chris-davies.co.uk/

HELPFUL INFORMATION - whilst we try to ensure our sales particulars are complete, accurate and reliable, if there is any point which is particularly important, please ask and we will be happy to check it, including specific information in respect of commuting links, surroundings, noise, views, or condition. For security purposes, applicants who wish to view will need to provide their name, address and telephone number. All measurements are approximate to the widest and longest points. Buyers are advised to instruct a solicitor to obtain verification of tenure and a surveyor to check that appliances, installations and services are in satisfactory condition.