



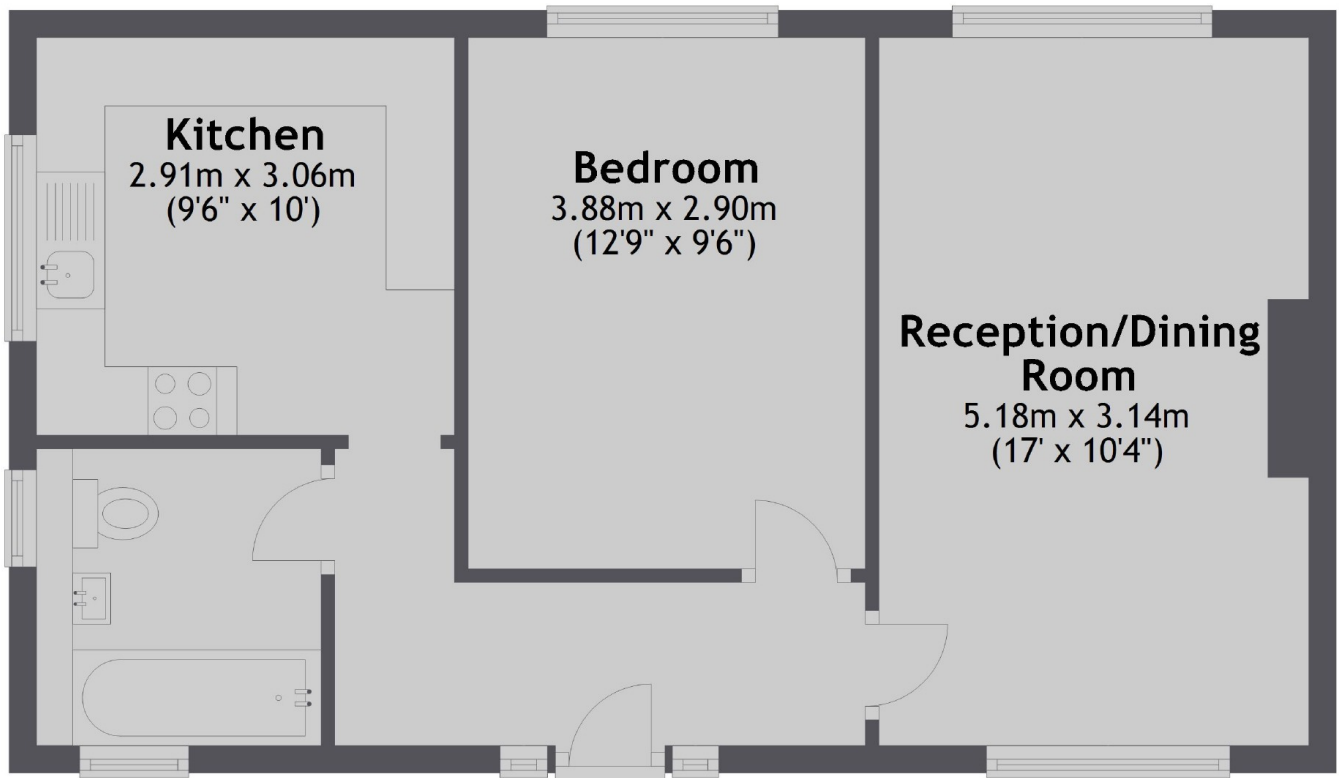
Eaton Rise, W5

£404 pw (£1,750 pcm)

A bright one bedroom first floor flat offering a large reception room with space for dining and a separate kitchen. Finished with wooden floors and neutral décor throughout

Only half a mile from Ealing Broadway station (Elizabeth, Central and District lines) and the shops and restaurants of the Broadway. Montpelier Park is also 100 yards away.

First Floor



Total area: approx. 48.1 sq. metres (518.0 sq. feet)

Robertson Smith & Kempson Ealing Lettings
1 The Broadway,
London, W5 2NT
020 8840 7885
ealinglettings@robertsonsmithandkempson.co.uk

Energy Rating: E. We aim to make our particulars both accurate and reliable. However they are not guaranteed; nor do they form part of an offer or contract. If you require clarification on any points then please contact us, especially if you're traveling some distance to view. Please note that appliances and heating systems have not been tested and therefore no warranties can be given as to their good working order.