

2 Hinchley Close

Hartford, Northwich

Impressive Four-Bedroom Detached Home, just a short walk from Hartford Village.

Council Tax band: F

Tenure: Freehold

EPC Energy Efficiency Rating: C

EPC Environmental Impact Rating: D

- Detached & Extended Home
- 4 Double Bedrooms
- Short Walk to Hartford Village
- Spacious Driveway
- Underfloor Heating
- Spacious Lounge & Dining Room
- Utility & Downstairs WC
- Additional Downstairs Space
- Juliet Balcony to the Landing
- Two En-Suite Bathrooms

Entrance Hallway

Spacious Hallway connecting the Lounge, Playroom, Downstairs WC and Kitchen Diner. Staircase leading to first floor.

Lounge

Connecting to the dining room. Double glazing to the front elevation. Fireplace point.

Dining Room

Providing access to the Kitchen Diner and the Conservatory.

Kitchen

Fitted with a range of wall, drawer and base units with worksurfaces above. Integral appliances. Providing access to the Snug, Utility Room and back to the Entrance Hallway.

Snug

With Velux windows overhead and bifold doors to the rear garden. Underfloor heating.

Utility Room

With a worksurface and space for various utilities. Access door to rear garden. Underfloor heating.

Playroom

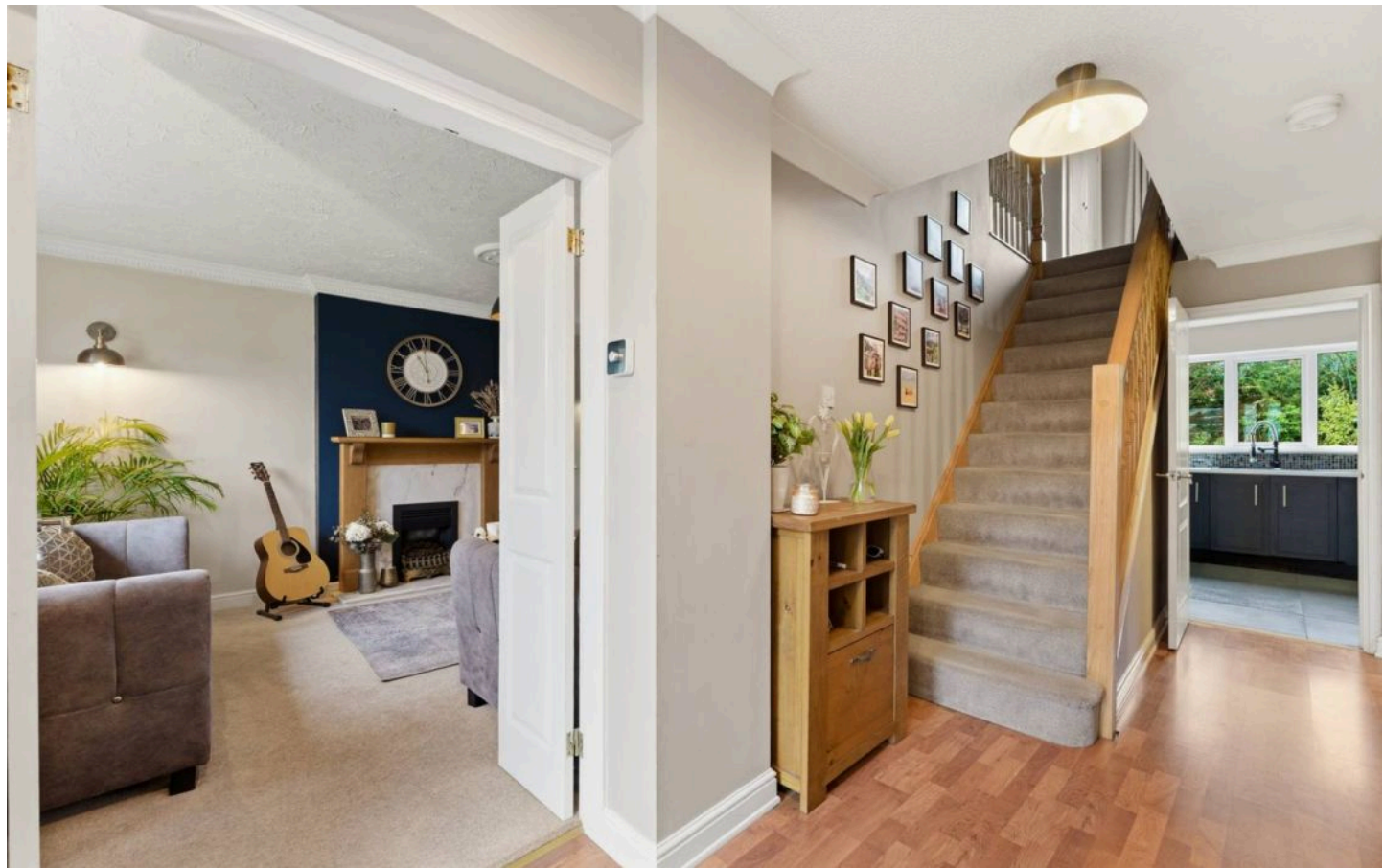
Currently being used as a playroom, this versatile space could be used in a range of different ways.

Downstairs WC

With a low level WC, hand wash basin and vanity unit.

Conservatory

Currently being used as a meditation/yoga space, with doors connecting to the Dining Room and Rear Garden.



Conservatory

Currently being used as a meditation/yoga space, with doors connecting to the Dining Room and Rear Garden.

Spacious Landing

With a fabulous Juliet Balcony overlooking the rear garden. Connecting to all Four Bedrooms, the family bathroom. Storage options. Loft access point.

Master Bedroom

Overlooking the front of the home, with access to the Master En-Suite.

Master En-Suite

Underfloor heating. Low level WC, hand wash basin and vanity unit, heated towel rail, stand in shower. High ceilings allow for spacious living.

Bedroom Two

Built in storage. Providing access to it's own en-suite.

Bedroom Two En-Suite

Shower cubicle, heated towel rail, low level WC, hand wash basin with vanity unit.

Bedroom Three

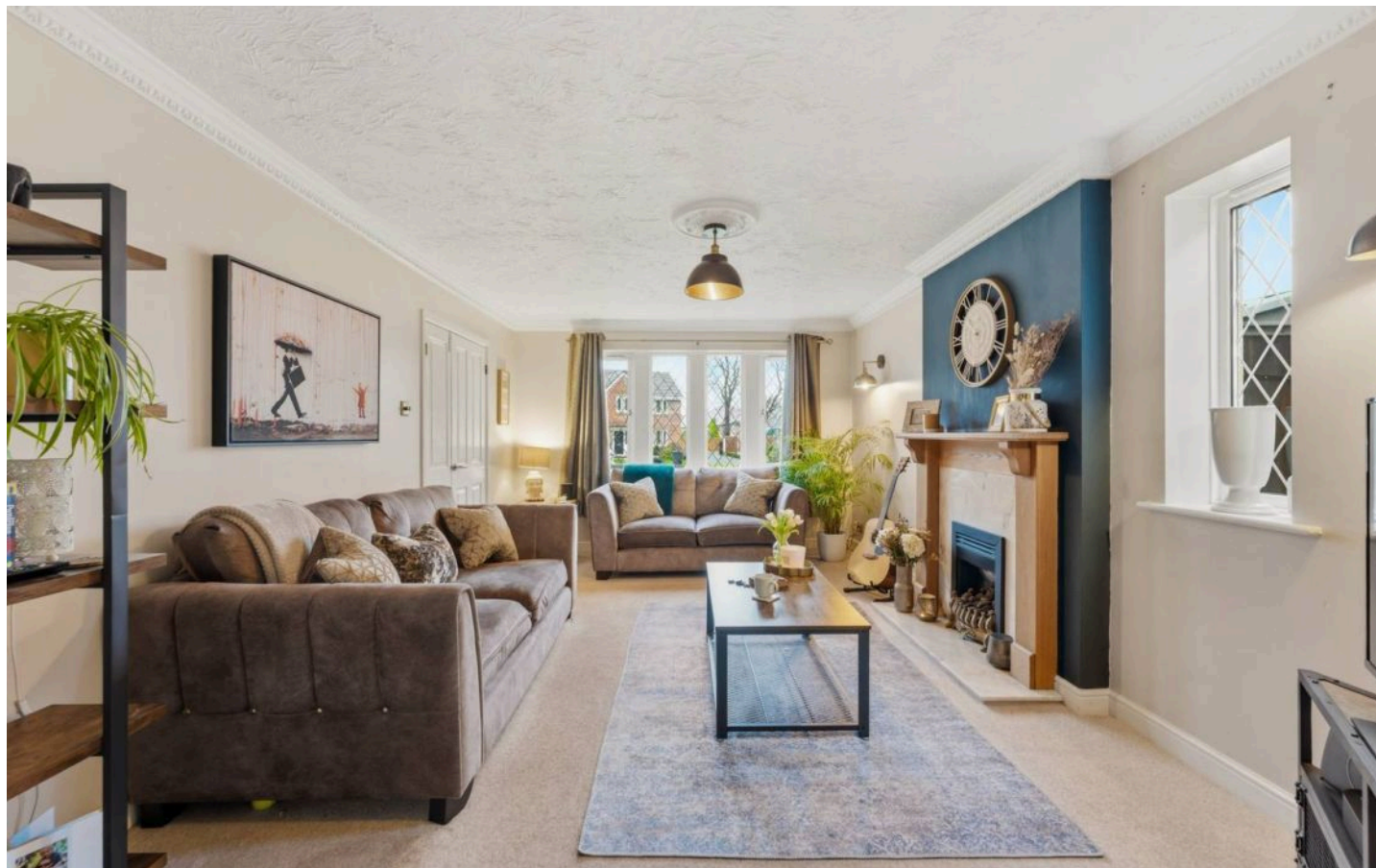
Overlooking the rear garden.

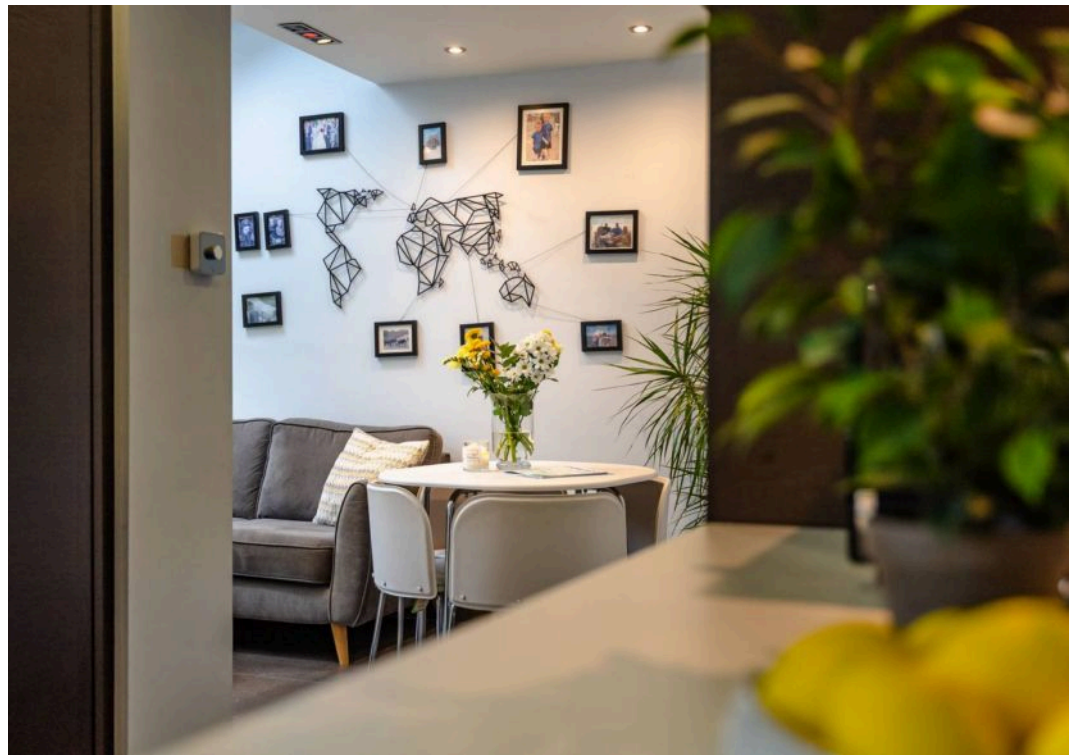
Bedroom Four

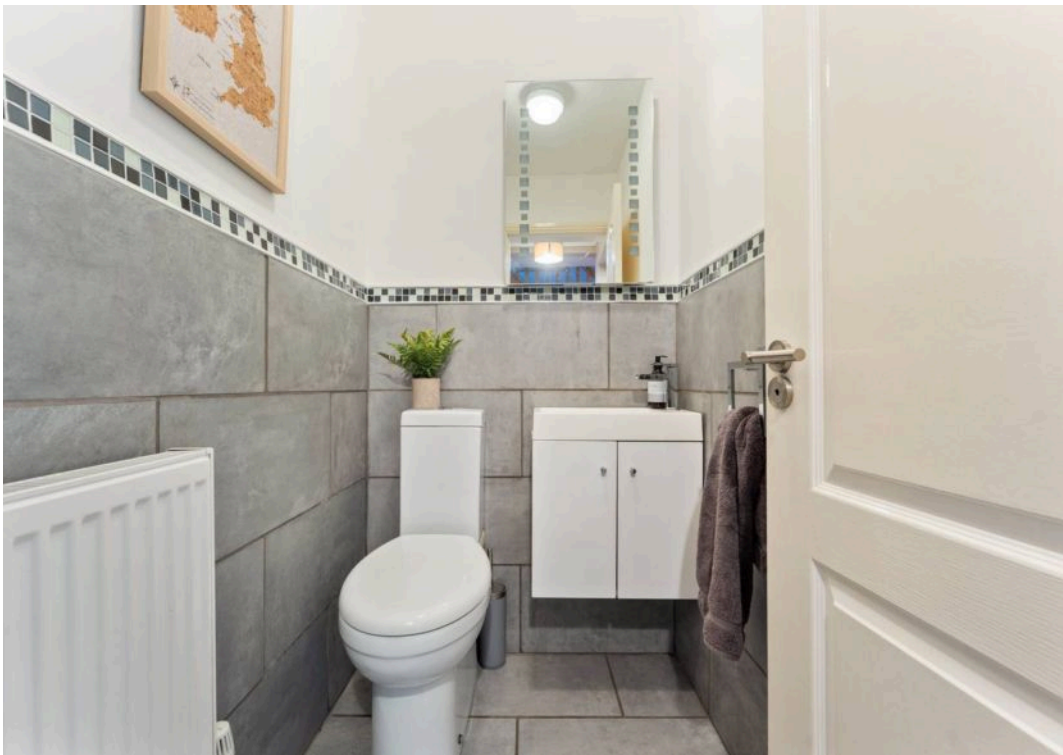
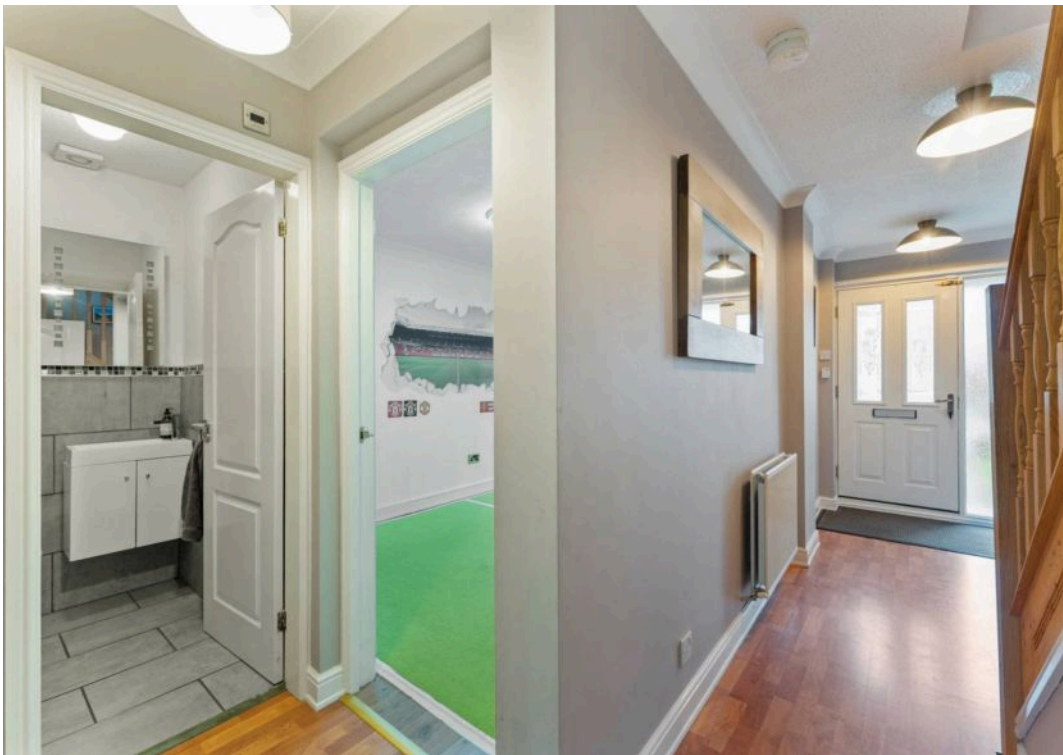
Overlooking the rear garden. Versatile space currently used as an office/bedroom.

Family Bathroom

Underfloor heating. Bathtub with overhead rainfall shower. Low level WC. Hand wash basin.

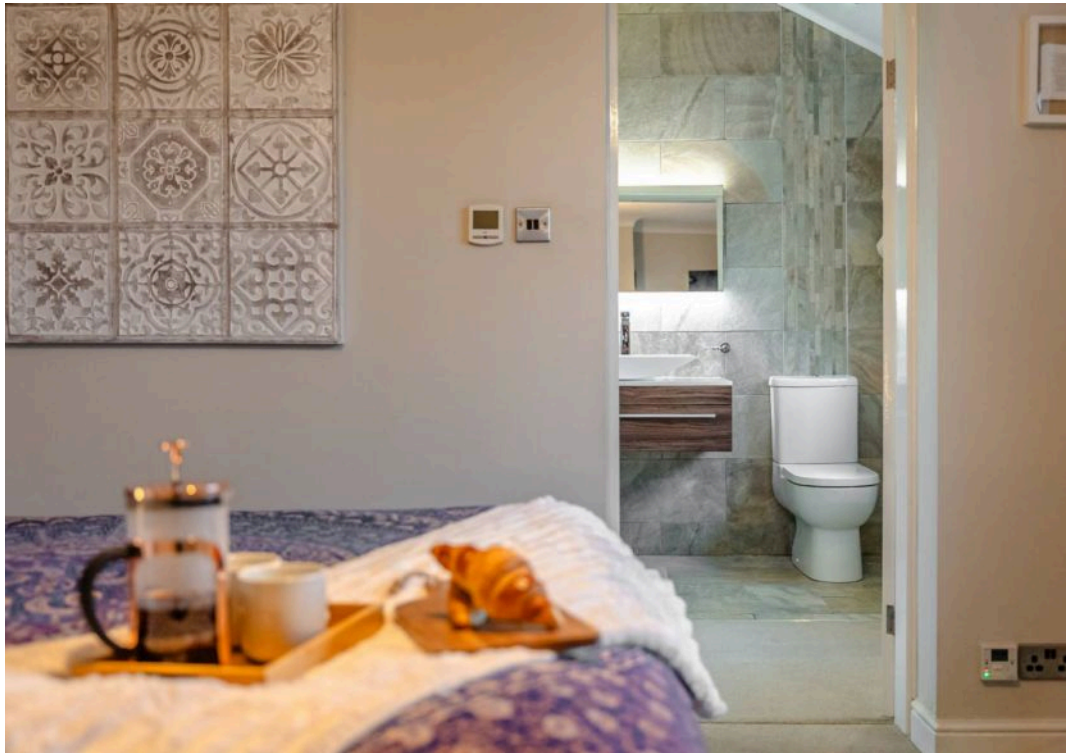


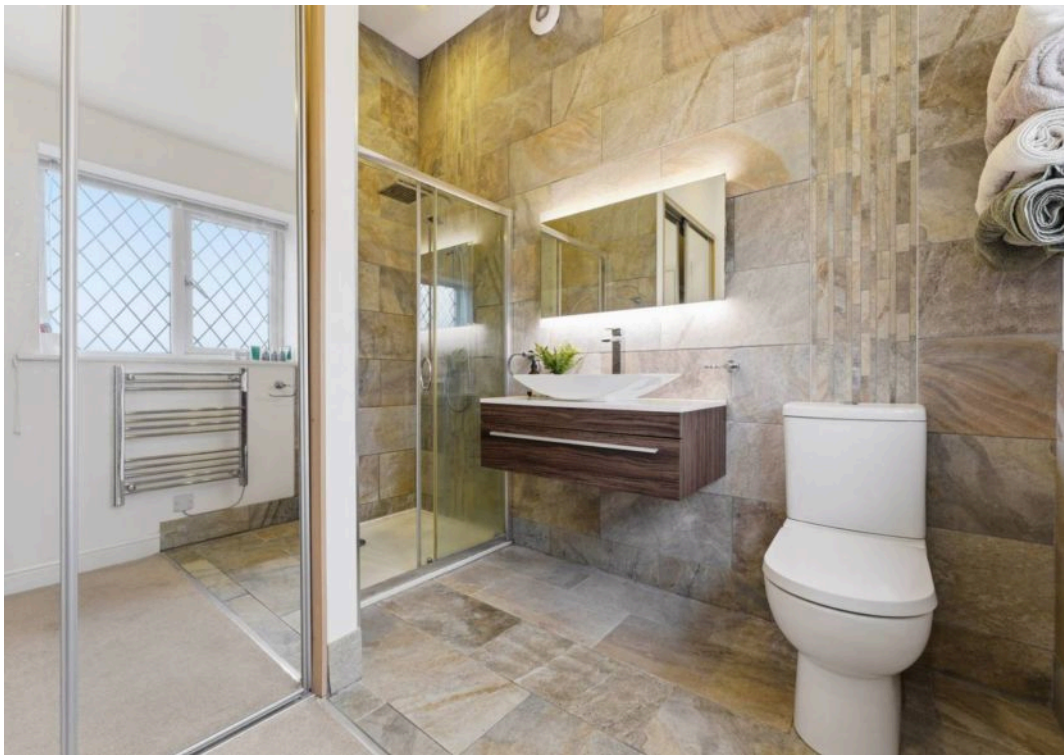








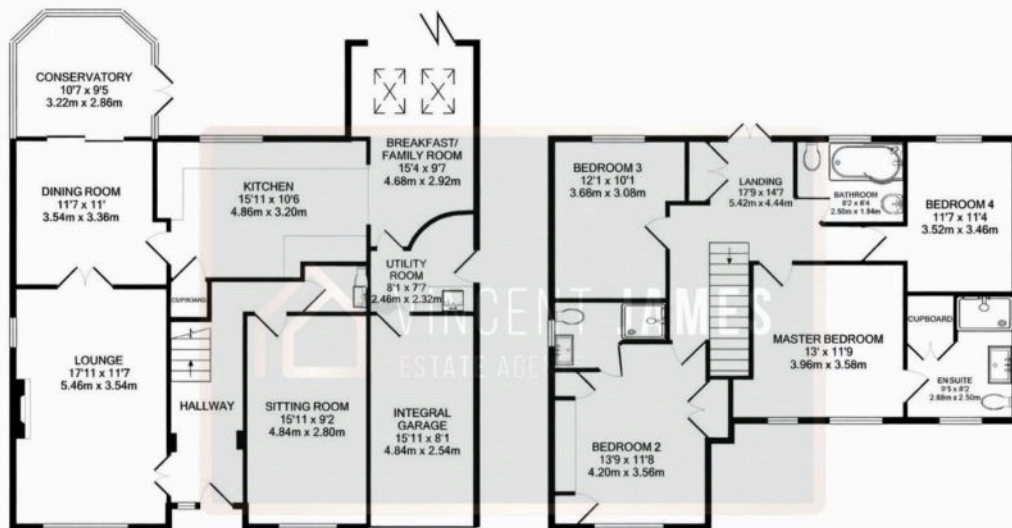














Vincent James Estate Agents

87 Witton Street, Northwich – CW9 5DR

01606663939 • hello@vincentjamesestateagents.co.uk • www.vincentjamesestateagents.co.uk/