

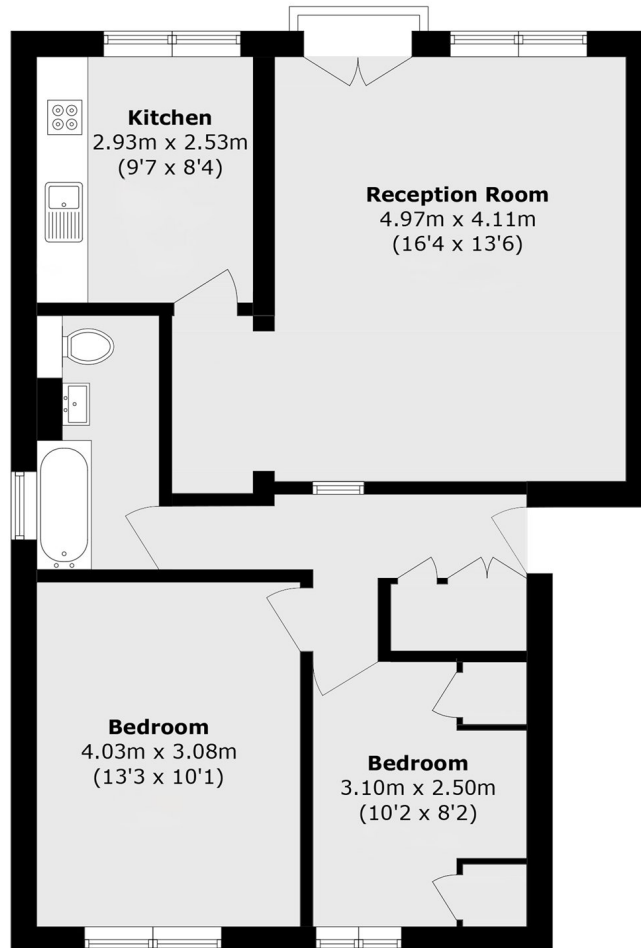


Amherst Road, W13

£485 pw (£2,100 pcm)

Set on the top floor, this well presented two double bedroom flat offers generous accommodation and excellent storage. The property has bright south-facing reception room, a separate fitted kitchen, off-street parking (on a first come, first served basis) and the added benefit of garage.

Tudor Court is less than a mile from Ealing Broadway station, shops and amenities.



Total area (approx.): 64.0 sq. m (688.8 sq. ft)

Robertson Smith & Kempson Ealing Lettings
1 The Broadway,
London, W5 2NT
020 8840 7885
ealinglettings@robertsonsmithandkempson.co.uk

Energy Rating: D. We aim to make our particulars both accurate and reliable. However they are not guaranteed; nor do they form part of an offer or contract. If you require clarification on any points then please contact us, especially if you're traveling some distance to view. Please note that appliances and heating systems have not been tested and therefore no warranties can be given as to their good working order.