



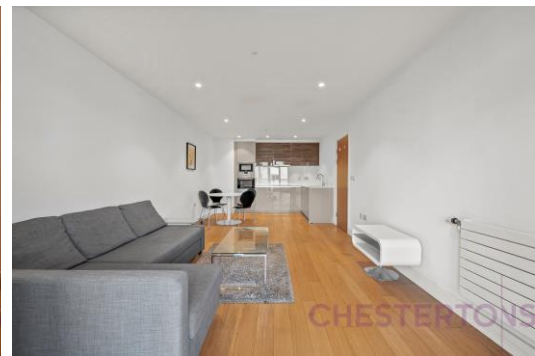
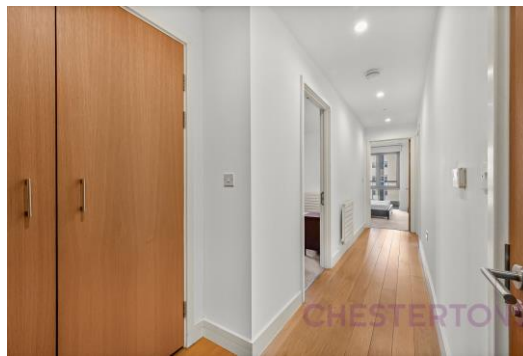
Barking Road

London, E16

£2,295 per month
(£529.62 per week)

Modern one-bedroom flat with open-plan living, fitted kitchen, and contemporary bathroom. Well located near amenities and transport links to Canary Wharf and the City.

CHESTERTONS



Barking Road

London, E16

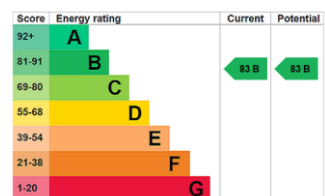
- Modern one-bedroom flat
- Bright open-plan living area
- Fitted kitchen and contemporary bathroom
- Close to local amenities
- Excellent transport links to Canary Wharf and the City



This well-presented flat offers a fantastic opportunity for first-time buyers, professionals, or investors seeking a modern home in a convenient East London location. Situated within a contemporary development, the property combines comfortable living with excellent access to local amenities and transport links.

The flat features a bright and spacious open-plan living and dining area, designed to maximise natural light and provide a welcoming space for both relaxing and entertaining. The adjoining kitchen is fitted with modern units and integrated appliances, offering both style and practicality.

Minimum Term: months
Deposit Required: £0.00
Local Authority: Newham
Council Tax Band: C
EPC Rating: B

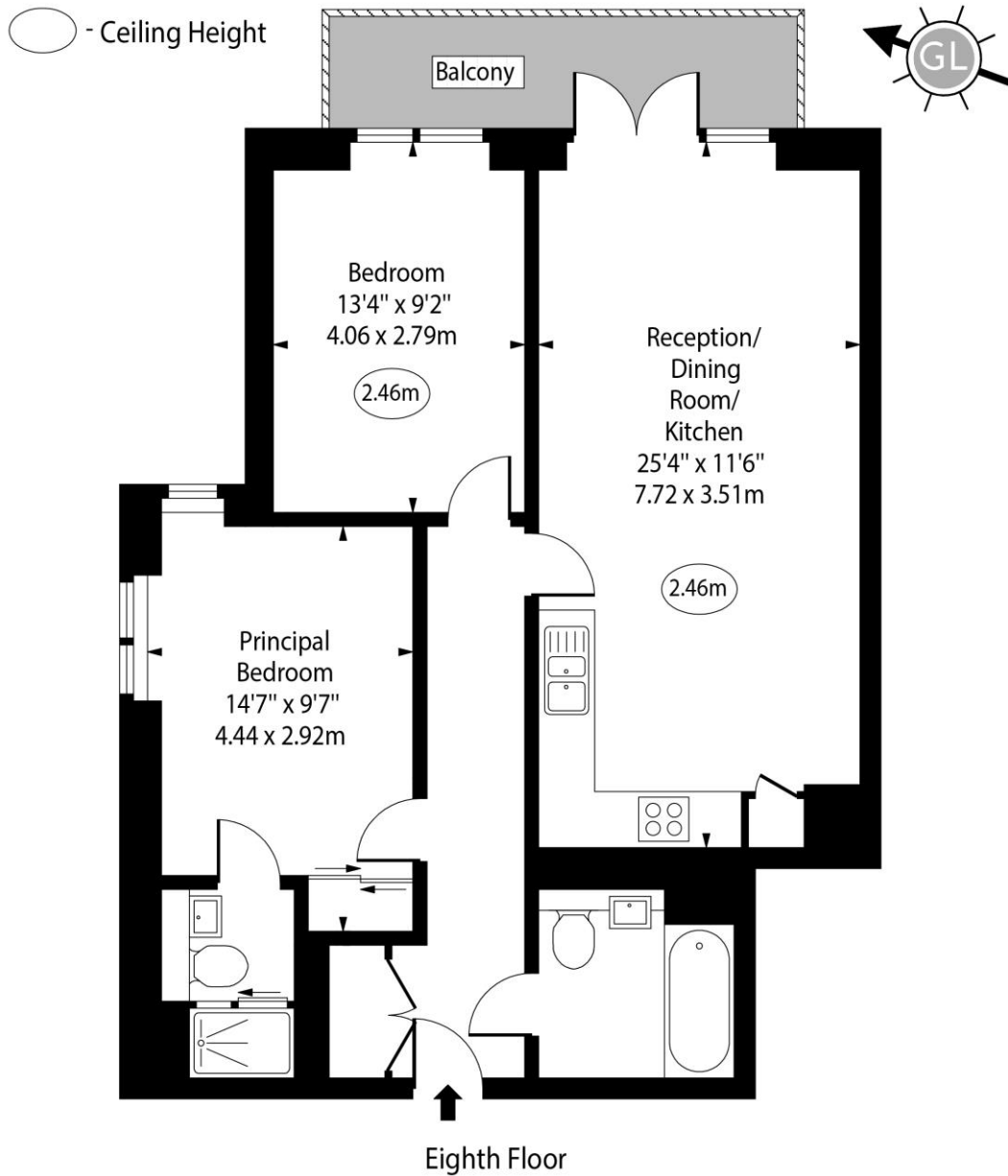


Chestertons Canary Wharf & Greenwich Lettings

Harbour Island
 28 Harbour Exchange Square
 Canary Wharf & Docklands
 London
 E14 9GE
 canarywharflettingsusers@chestertons.co.uk
 02075108310

Additional tenant charges apply (fees apply to non-AST tenancies only)
 Tenancy Agreement Fee: £300
 References per Tenant/Guarantor: £60
 Inventory check (approx. £100 – £250 inc. VAT)
chestertons.co.uk/property-to-rent/applicable-fees

Barking Road, E16



Approx Gross Internal Area 740 Sq Ft - 68.75 Sq M

Every attempt has been made to ensure the accuracy of the floor plan shown. However, all measurements, fixtures, fittings, and data shown are approximate interpretations and for illustrative purposes only. Measured according to the RICS. Not To Scale.

www.goldlens.co.uk
Ref. No. 031470M