



Flat 2, Sonny Rae Villa Thurlow Road, Torquay – TQ1 3GJ
£250,000





Flat 2

Sonny Rae Villa Thurlow Road, Torquay

Exclusive new development of 11 stunning apartments by the award-winning, family-owned builders McCarthy Homes. This apartment benefits from 2 bedrooms, 2 bathrooms, parking and private outside space.. Council Tax band: TBD

Tenure: Leasehold

- Exclusive new development of 11 apartments by award-winning McCarthy Homes
- Stunning garden level apartment with private outside space
- Lift access to all floors
- Rebuilt Victorian villa combining period elegance with modern specification
- Two bedrooms, principal with luxury en suite
- Beautifully appointed main bathroom with contemporary finishes
- Lounge/dining room
- Semi-open plan kitchen with integrated appliances
- Allocated parking, cycle storage and dedicated recycling area
- Secure video entry system with in-apartment video communication



Flat 2

Sonny Rae Villa Thurlow Road, Torquay

Thurlow Road is an elevated residential address in Torquay, positioned between the sought-after area of Wellswood and the town centre. The tree lined road enjoys a quiet tucked away setting while benefiting from sea views across Tor Bay from various vantage points. The location combines convenience with lifestyle appeal, offering straightforward access to local schools, transport links and the wider English Riviera, making it ideal for both permanent residence and a secure coastal retreat. Torquay Harbour and the marina are nearby, offering waterside dining and leisure facilities. Well regarded schools are close by including Ilsham C of E Primary School and Torquay Boys' and Girls' Grammar Schools. Regular bus services connect across Torbay, with Torquay train station providing mainline links to Exeter, Bristol and London Paddington. The A380 South Devon Highway offers direct road access to Exeter and the M5 beyond.

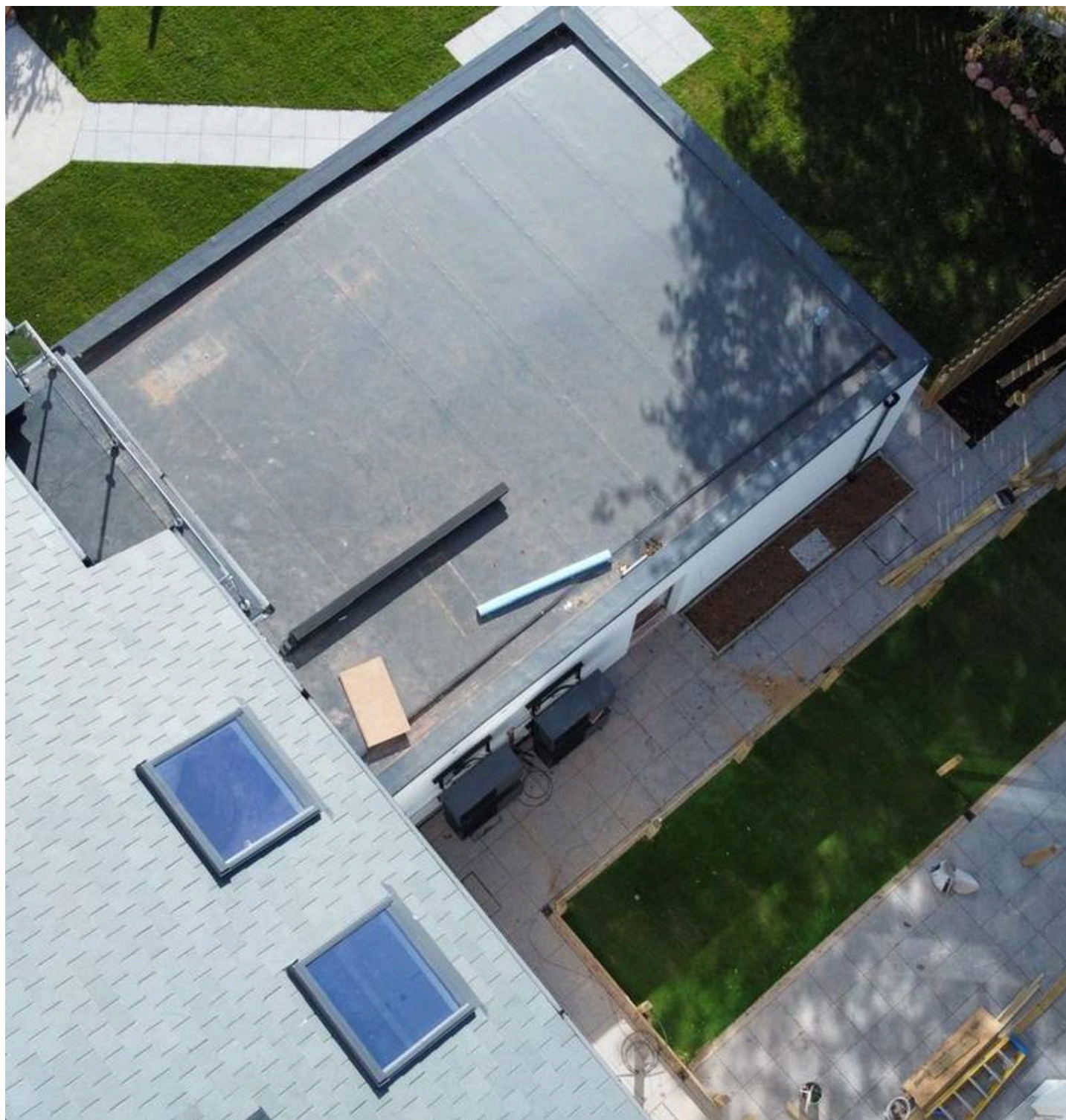
Absolute Sales & Lettings

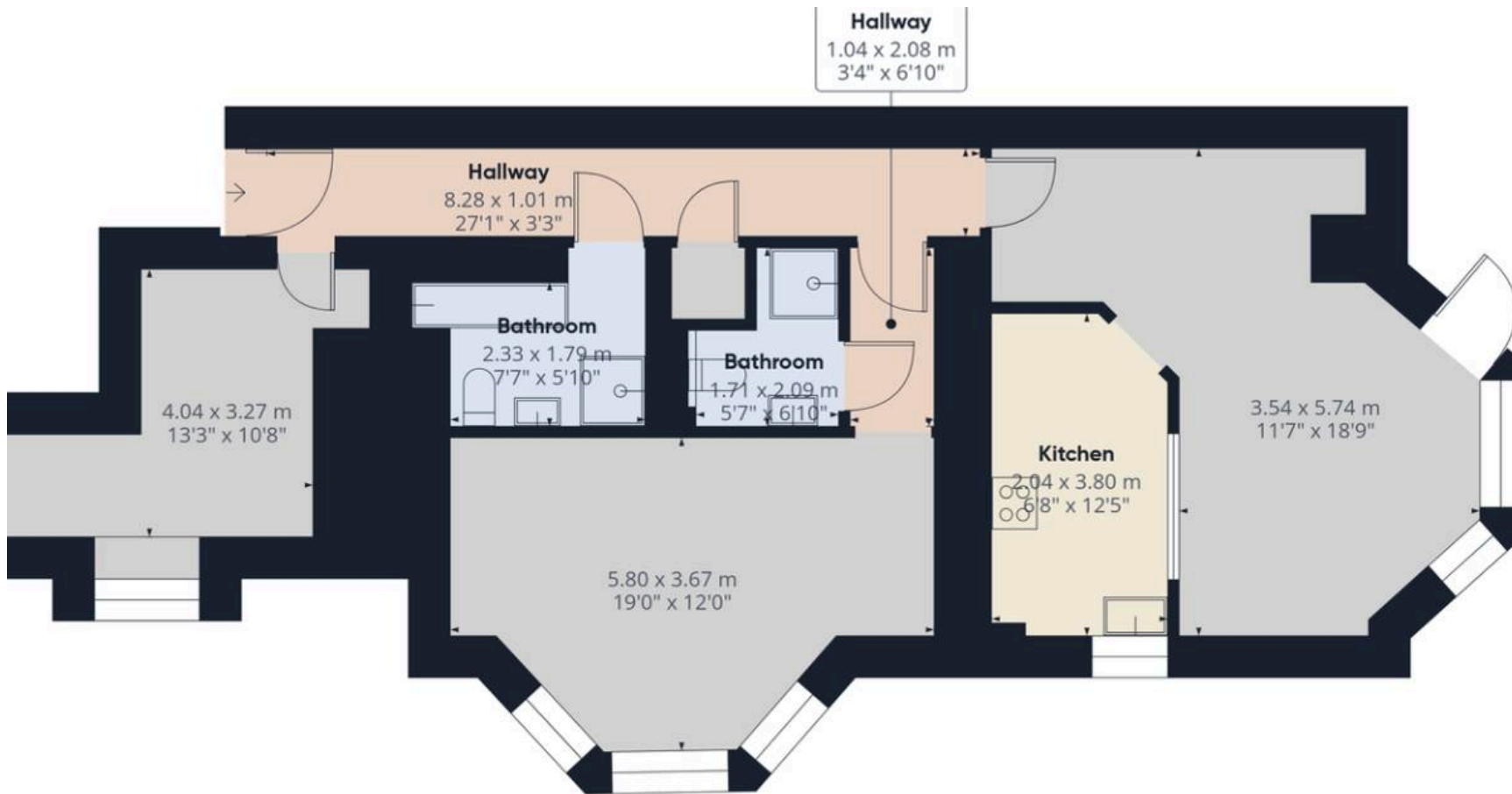
Absolute Sales & Lettings Ltd, 13 Ilsham Road - TQ1 2JG

01803 214214

torquay@movewithabsolute.co.uk

movewithabsolute.co.uk/





Approximate total area^m

76.9 m²

829 ft²

