



Guide Price

£500,000

Freehold

5x  2x  2x 

**Brisley Court,
Kingsnorth, Ashford,
Kent, TN23**

Wards
Helping you move forwards



Main features

- Private cul-de-sac
- Guest cloakroom
- Modern kitchen with integrated appliances
- Utility room
- En-suite to main bedroom
- Good size private rear garden
- Garage and driveway parking

Accommodation

GROUND FLOOR

Entrance Hall
 Lounge: 19'2 x 12'2 (5.85m x 3.71m)
 Cloak Room
 Dining Room: 12'6 x 9'8 (3.81m x 2.95m)
 Kitchen: 12'6 x 9'2 (3.81m x 2.80m)
 Utility Room: 9'4 x 6'2 (2.85m x 1.88m)

FIRST FLOOR

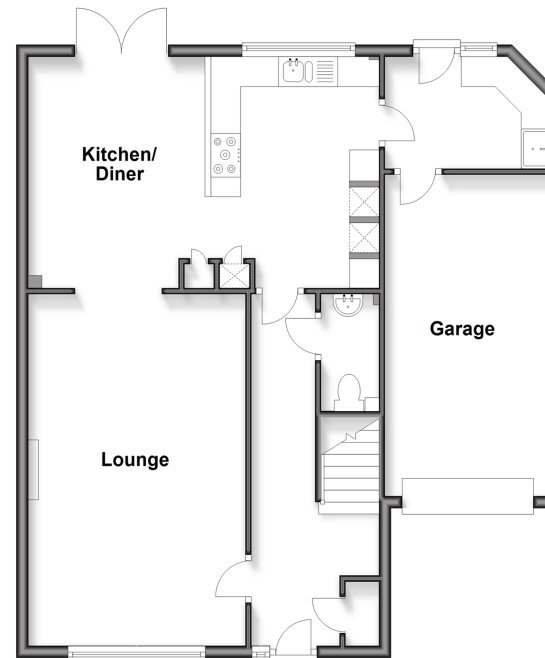
Landing
 Bedroom 3: 19'8 x 9'2 (6.00m x 2.80m)
 Bedroom 4: 8'7 x 6'9 (2.62m x 2.06m)
 Bedroom 1: 12'2 x 9'7 (3.71m x 2.92m)
 En-Suite Shower Room
 Bathroom
 Bedroom 2: 12'3 x 10'2 (3.74m x 3.10m)
 Bedroom 5: 6'9 x 6'7 (2.06m x 2.01m)

OUTSIDE

Garage & Driveway

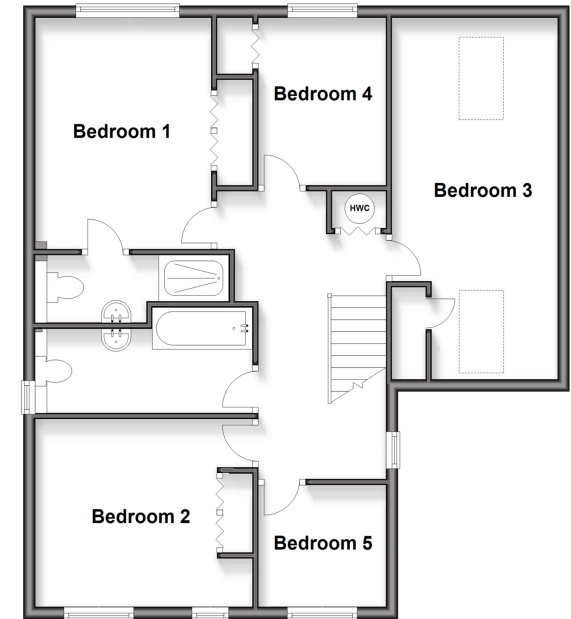
Ground Floor

Approx. 79.5 sq. metres (856.0 sq. feet)



First Floor

Approx. 76.2 sq. metres (819.9 sq. feet)



Call Ashford - 01233 639531 ■ wardsof Kent.co.uk

■ Legal advice should be taken to verify fixtures/fittings, planning, alterations and/or lease details

■ Appliances & services are untested, dimensions are approximate and floor plans are not to scale



12232340/20260221/SH/JRB