



Lakedale Road, SE18

£450,000

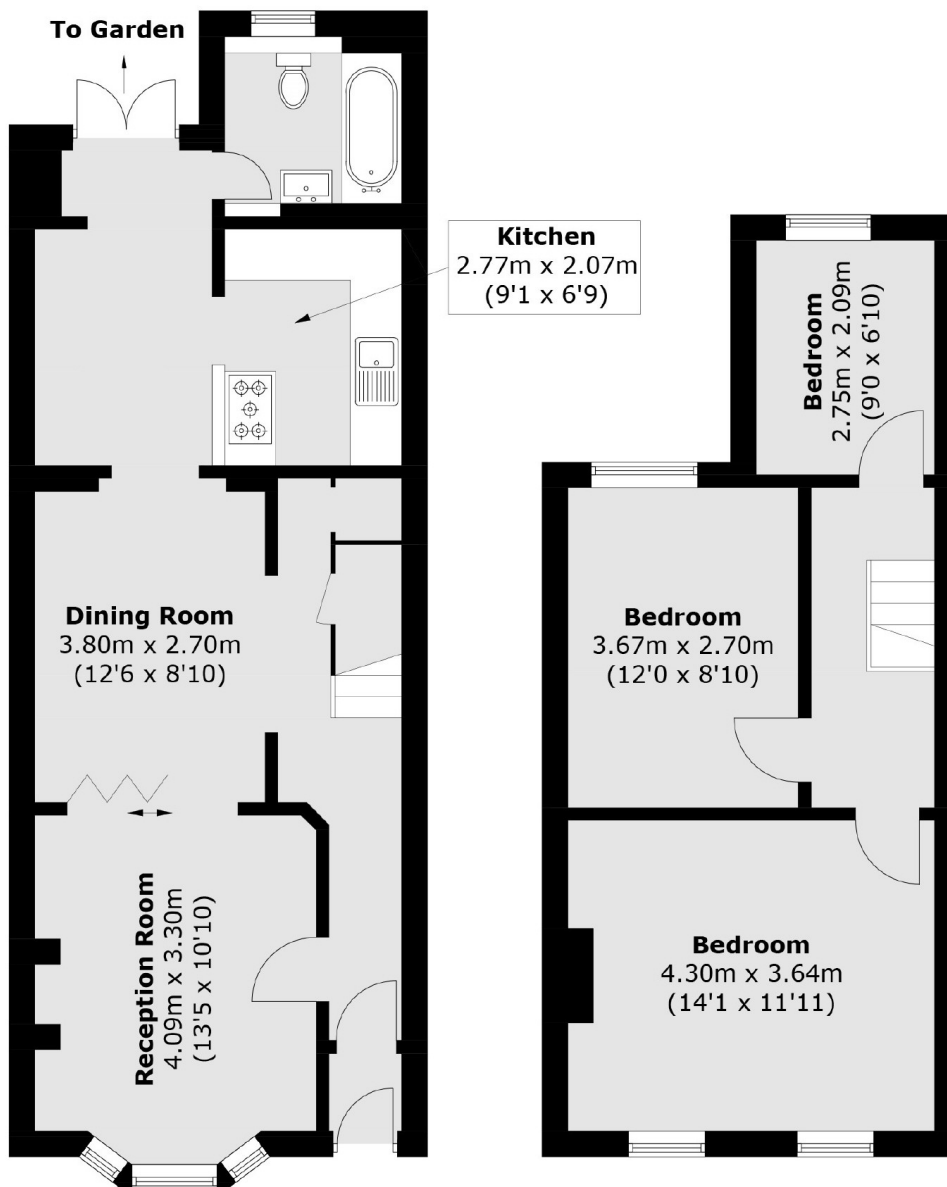
A bright and well-proportioned three-bedroom freehold house, ideally positioned on a popular residential street directly opposite Winn's Common. The ground floor features a separate front reception room, a generous dining room leading into a modern fitted kitchen, and a contemporary family bathroom. Upstairs, you'll find three well-proportioned bedrooms, all filled with natural light and offering a warm, comfortable feel. To the rear is a private garden, ideal for entertaining or relaxing, and at the far end you benefit from beautiful panoramic views across the London skyline a rare find in this area.

Ideally located close to Plumstead Station, Woolwich Arsenal DLR, and the Elizabeth Line, the property offers excellent access into Canary Wharf, London Bridge, and Central London. You're also within easy reach of local shops, schools, and green spaces like Winn's Common and Plumstead Gardens.

Features

Victorian House
Chain Free
Three Bedrooms
Views Overlooking London
Close To Plumstead Station
Good Condition Throughout

Lakedale Road, London, SE18



Ground Floor

First Floor

Total area (approx.): 91.3 sq. m (982.7 sq. ft)