



Willow Vale, W12

£600,000

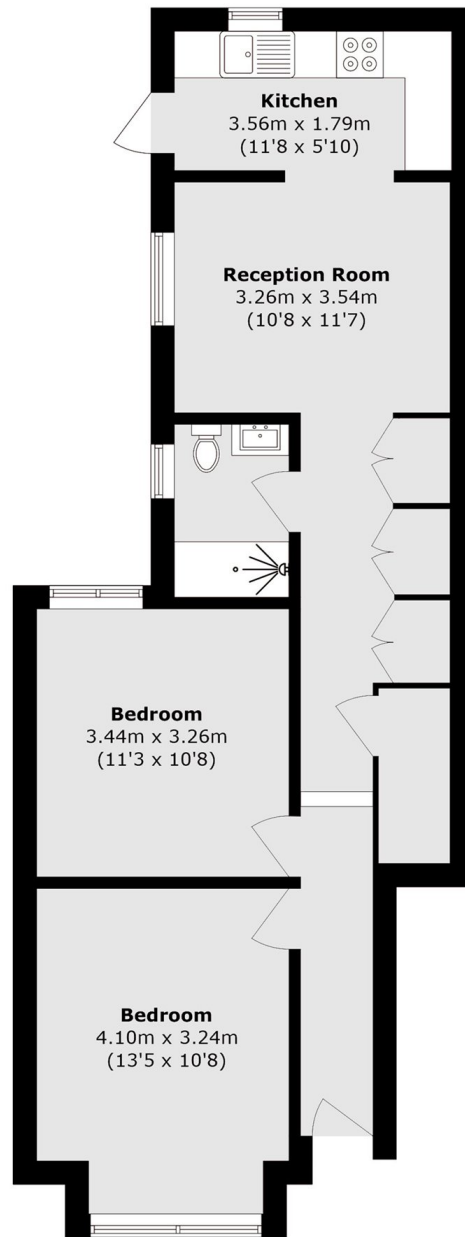
A recently refurbished two-bedroom garden flat in the heart of Shepherd's Bush, with a open-plan living room/ kitchen with direct access to a private patio garden. Offered to the market with no onward chain.

The location couldn't be more convenient. You're just moments from Shepherd's Bush station and all the amenities the area has to offer, with Westfield London, Soho House and the hustle and bustle of Shepherd's Bush on your doorstep. If you prefer a more neighbourhood feel, the cafés, independent shops and local favourites of Askew Road Village are just a short stroll away.

Features

- No Onward Chain
- Two Double Bedrooms
- Garden Patio
- Recently Refurbished
- Quiet Residential Road
- Westfields Shopping Centre

Willow Vale, London, W12



Total area (approx.): 61.3 sq. m (659.8 sq. ft)