

Flat (EPC Rating: D)

NORTHFIELD AVENUE LONDON, W13 9RR

Per month

£2,900 Per

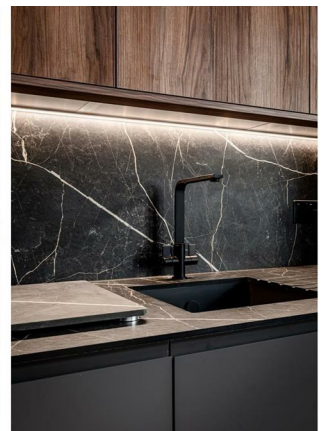
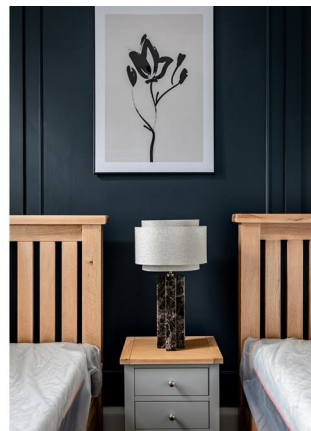
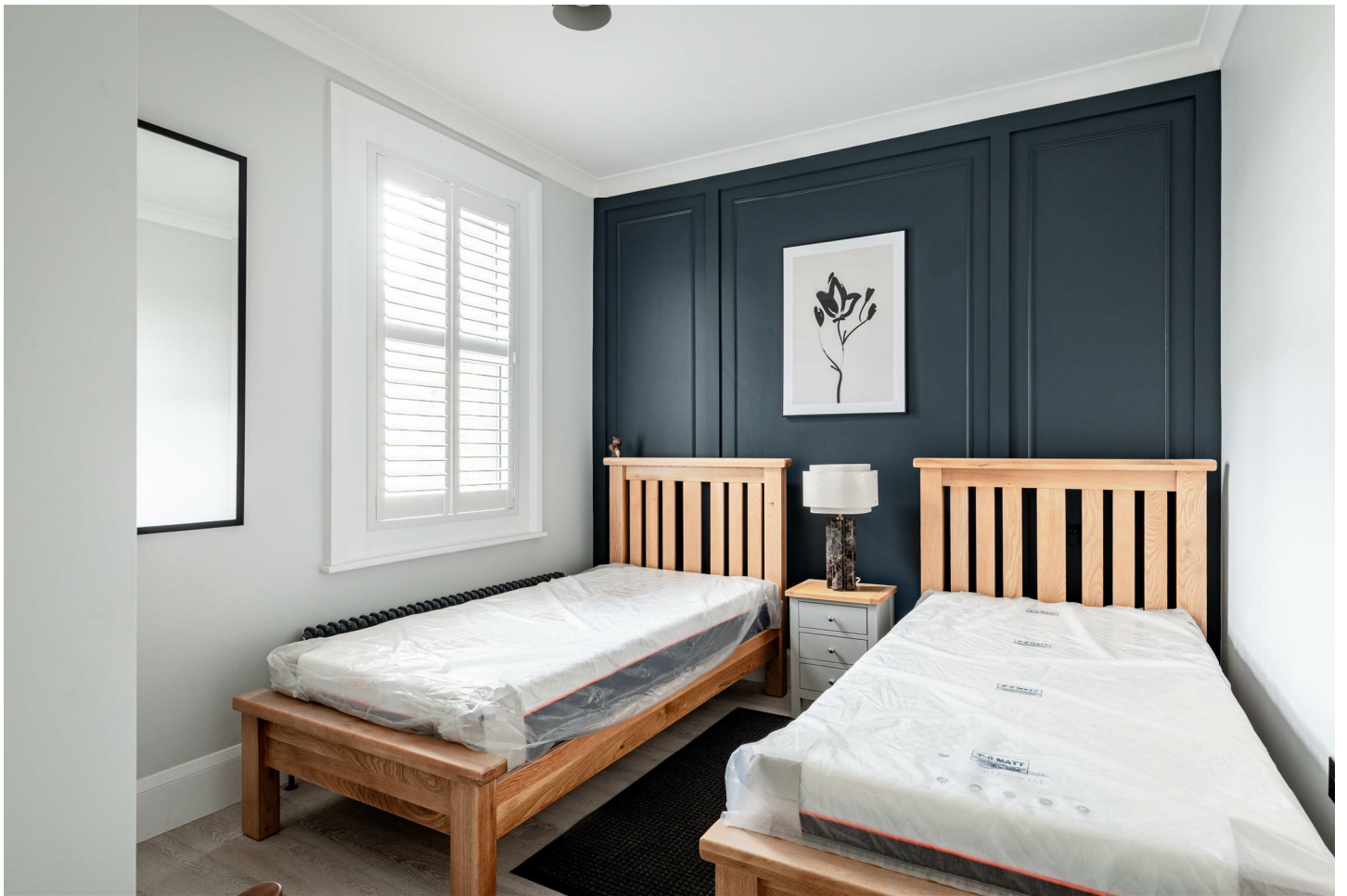
ALEXANDER STEER
Estate Agents



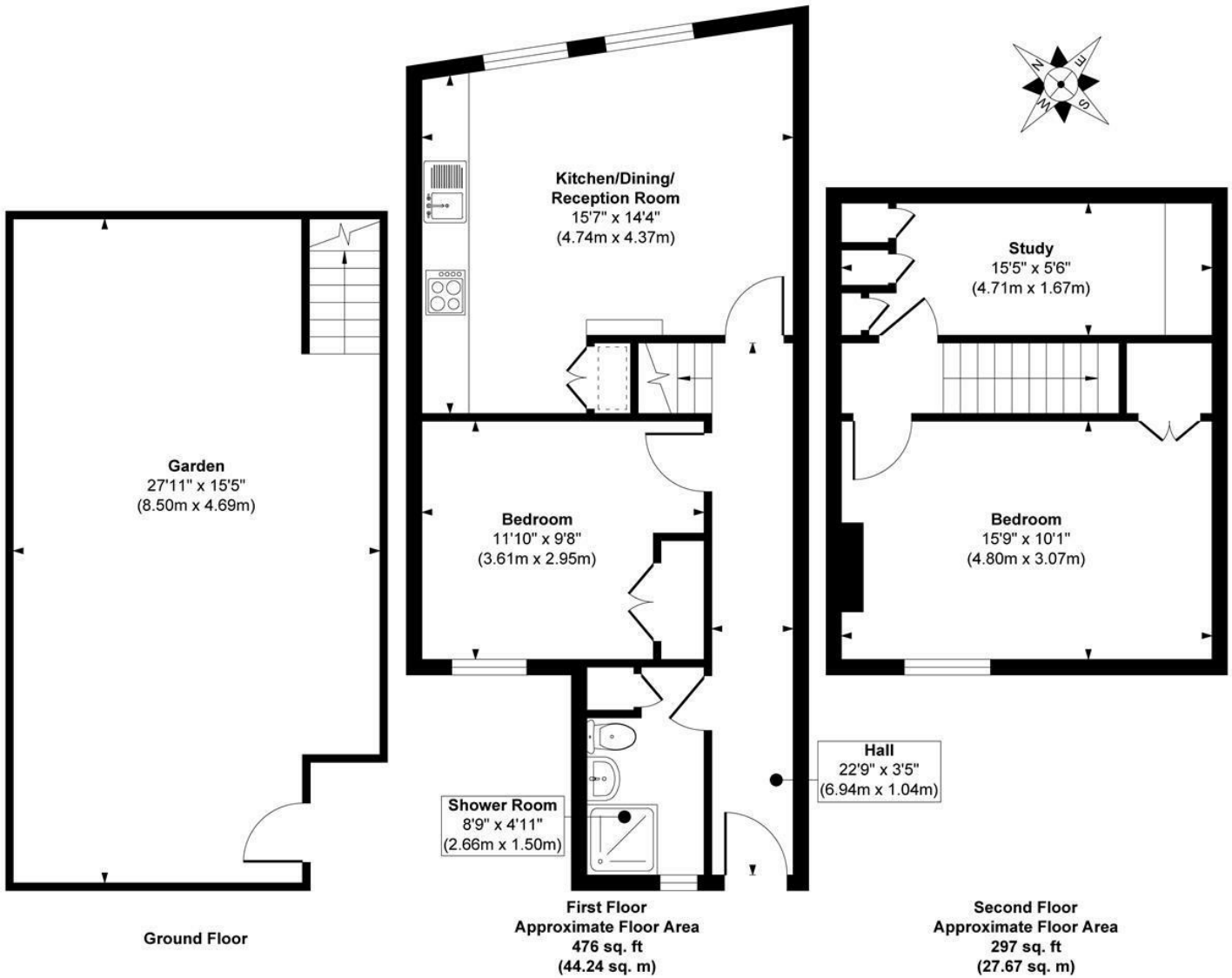
2 BEDROOM FLAT LOCATED IN LONDON

An exceptional two-bedroom split-level maisonette finished to an outstanding specification throughout, featuring a stunning open-plan kitchen/reception room, luxury shower room, separate study, private landscaped garden. Ideally located on vibrant Northfield Avenue, close to Northfields Underground Station and an excellent selection of cafés, restaurants and local amenities.

Situated on the popular Northfield Avenue, this property is just moments from a fantastic selection of cafés, restaurants, independent shops and everyday amenities. Northfields Underground Station (Piccadilly Line) is within easy walking distance, offering excellent links to Central London and Heathrow Airport, while nearby West Ealing provides Elizabeth Line services. Lammas Park and Walpole Park are also close by, making this an ideal location for professionals, couples and families alike.



Northfield Avenue



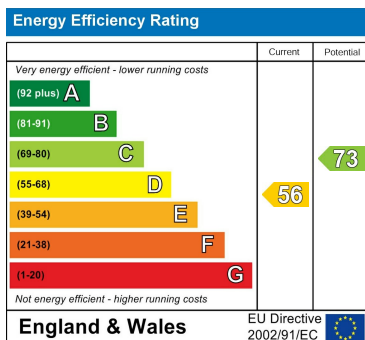
Approx. Gross Internal Floor Area 773 sq. ft / 71.91 sq. m

Illustration for identification purposes only, measurements are approximate, not to scale.

Produced by Elements Property

Council Tax Band

Energy Performance Graph



Call us on

0203 822 0111

hello@alexandersteer.co.uk

alexandersteer.co.uk



©ALEXANDERSTEERPROPERTY

Agents Note: Whilst every care has been taken to prepare these particulars, they are for guidance purposes only. All measurements are approximate and are for general guidance purposes only and whilst every care has been taken to ensure their accuracy, they should not be relied upon and potential buyers are advised to recheck the measurements.