

# HUNTERS®

HERE TO GET *you* THERE



## 41 Eastlake Road

London, SE5 9QJ

£2,400



Large 2 double bedroom period conversion.

This split level 2 double bedroom apartment forms part of an imposing Victorian Terrace. The first floor benefits from a spacious separate reception, and a modern fitted kitchen diner with a range of integrated appliances.

The second floor contains two good sized double bedrooms and a beautiful contemporary bathroom which comes with both bath and shower fitting.

Situated on a quiet residential street minutes from excellent transport links including Loughborough Junction overland station with easy access to the West End & City.

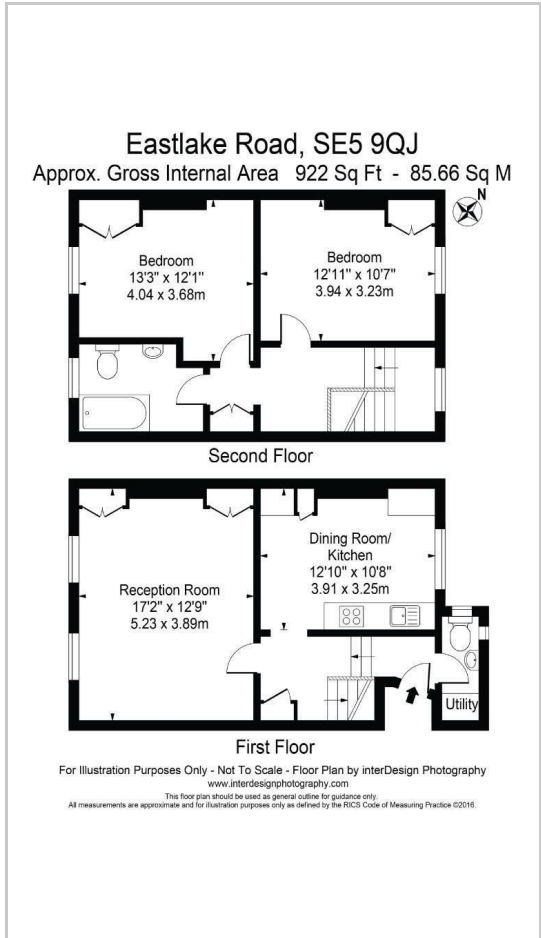
There are a vast range of bars, restaurants and local amenities nearby. Brixton with its vibrant entertainment scene and tube station is a short hop away.



## Area Map



## Floor Plans



## Energy Efficiency Graph



These particulars are intended to give a fair and reliable description of the property but no responsibility for any inaccuracy or error can be accepted and do not constitute an offer or contract. We have not tested any services or appliances (including central heating if fitted) referred to in these particulars and the purchasers are advised to satisfy themselves as to the working order and condition. If a property is unoccupied at any time there may be reconnection charges for any switched off/disconnected or drained services or appliances - All measurements are approximate. **THINKING OF SELLING?** If you are thinking of selling your home or just curious to discover the value of your property, Hunters would be pleased to provide free, no obligation sales and marketing advice. Even if your home is outside the area covered by our local offices we can arrange a Market Appraisal through our national network of Hunters estate agents.