

Abbey Heights



The Kirkstone

Four bedroom detached house



The Kirkstone

Ground Floor

Kitchen/Diner
8.55m x 2.75m (max)

Lounge
3.40m x 5.08m

Study
2.92m x 1.71m

Utility
1.69m x 1.88m

Garage
3.14m x 5.69m



First Floor

Primary Bedroom
3.75m x 3.21m (max)

Dressing Area
2.06m x 1.38m

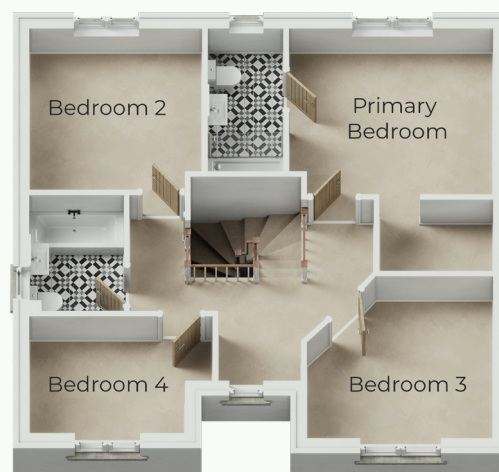
En-Suite
1.40m x 2.76m

Bedroom 2
3.17m x 3.09m (max)

Bedroom 3
3.40m x 3.13m (max)

Bedroom 4
3.36m x 2.23m (max)

Bathroom
1.70m x 2.30m



Tel: 07824 160 634 / 01539 560 605
Dalton Lane, Barrow-in-Furness LA14 4PZ
oakmerhomes.co.uk


Oakmere[®]
CREATING QUALITY HOMES

The images shown are for illustration purposes only. Whilst every care is taken to ensure accuracy of information contained in this brochure, we cannot take responsibility for any error or misdescription and we reserve the right to alter or amend designs and specifications without prior notice. The information contained herein is for guidance only and does not form part of any contract or warranty. External finishes may vary from those shown and any dimensions given are approximate and sizes may vary from those indicated. Properties may be built handed (mirror image). External materials, landscaping, garage and window positions may vary to suit the location of individual homes. Elevational treatments may vary to those shown, please speak to our New Homes Advisor for the details regarding individual plot specifications.