



Birkbeck Avenue, W3

£775,000

Situated on a tree lined road and less than a quarter of a mile from Springfield Gardens, this four bedroom, two reception mid-terrace family home is filled with natural light, period feature and has a South facing garden, Birkbeck Avenue will be sold with no onward chain.

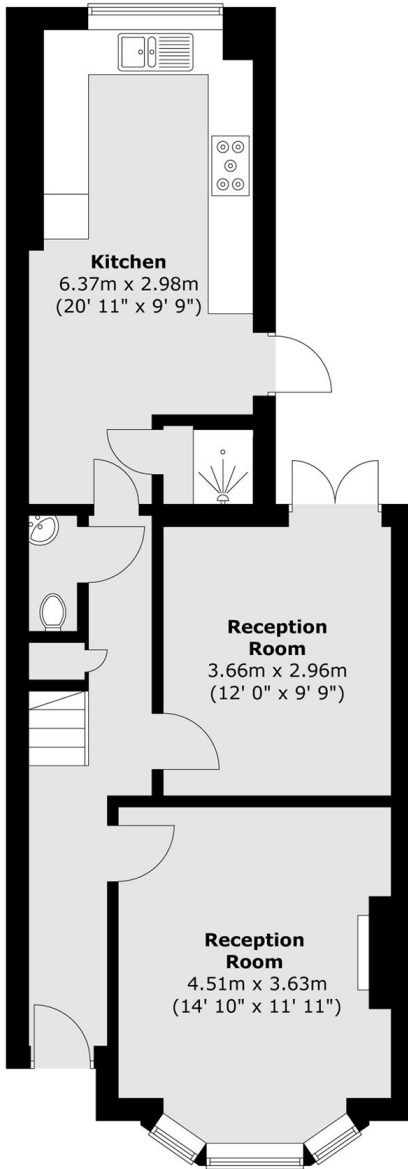
Birkbeck Avenue is located just a 0.3 mile walk to Acton Main Line which is on the Elizabeth line and provides access in and around London. The development is also conveniently placed just a stones throw away from a parade of shops to cater for your daily needs.

Features

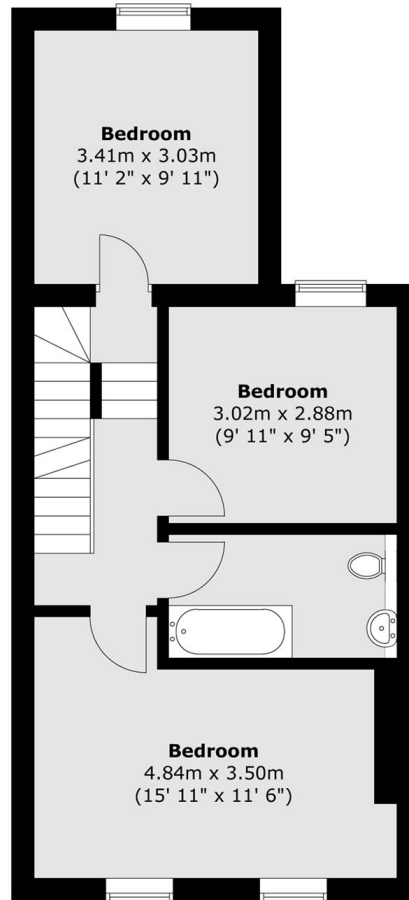
- Period House
- Four Bedrooms
- Two Receptions
- Three Bathrooms
- Elizabeth Line
- No Onward Chain

Birkbeck Avenue, London, W3

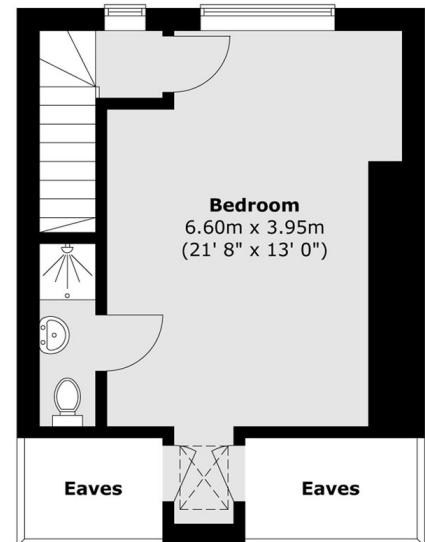
Ground Floor



First Floor



Second Floor



Total area (approx.) : 131.4 sq. m (1414 sq. ft)
(Excluding eaves)