



**FELIKS AUGUSTINE**

PROPERTY SALES AND LETTINGS



## Deptford High Street London

**£1,800 Per month**

In the heart of vibrant Deptford, this spacious one bedroom flat offers a quiet oasis but is well connected. The property is ideally situated just a stone's throw from Deptford Station, a mere 100 metres away, providing excellent transport links to key destinations such as London Bridge, Cannon Street, Charing Cross, Luton and Hampstead.

The flat is spacious and quiet, making it a perfect retreat from the hustle and bustle of city life. Its central location means you are never far from an array of local amenities, including a variety of pubs, cafes, bars, restaurants, and clubs, ensuring that you can enjoy the lively culture that Deptford has to offer.

Additionally, the proximity to the Docklands Light Railway (DLR) enhances your connectivity, making commuting and exploring London easy with frequent trains to Canary Wharf, Bank, Tower Gateway and Lewisham. This property is an ideal choice for those seeking comfort and convenience in one of London's most dynamic areas.









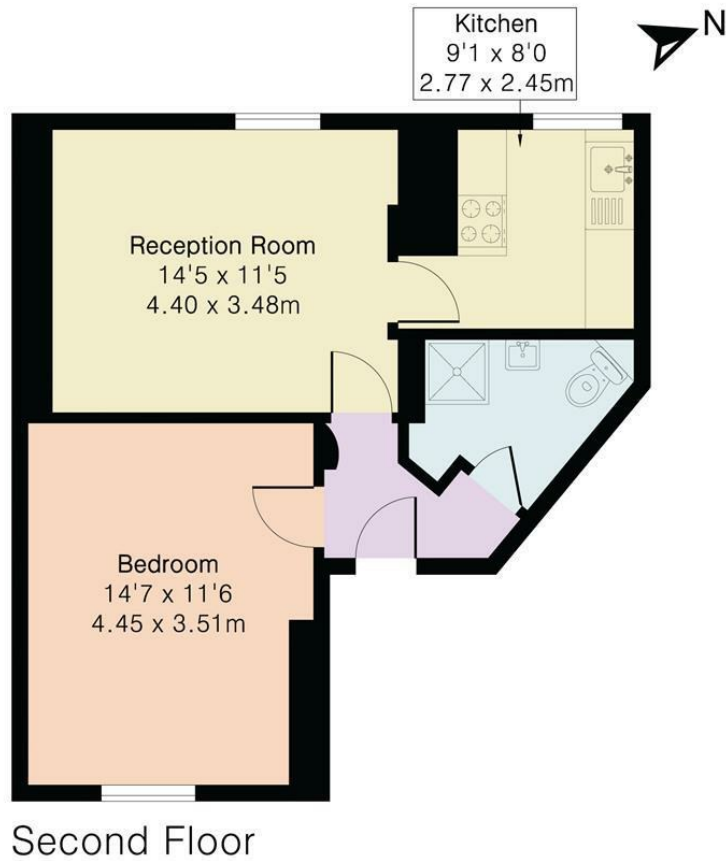


## Additional Information

**Local Authority** - Lewisham  
**Council Tax** - Band B  
**Viewings** - By Appointment Only

**Floor Area** - 474.00 sq ft  
**Tenure** -

Approximate Gross Internal Area 507 sq ft - 47 sq m



Floor plan produced in accordance with RICS Property Measurement 2nd Edition. Although Pink Plan Ltd ensures the highest level of accuracy, measurements of doors, windows and rooms are approximate and no responsibility is taken for error, omission or misstatement. These plans are for representation purposes only and no guarantee is given on the total square footage of the property within this plan. The figure icon is for initial guidance only and should not be relied on as a basis of valuation.



Energy Efficiency Rating		Current	Potential
Very energy efficient - lower running costs			
(92 plus) A			
(81-91) B			
(69-80) C			
(55-68) D		67	78
(39-54) E			
(21-38) F			
(1-20) G			
Not energy efficient - higher running costs			
<b>England &amp; Wales</b>		EU Directive 2002/91/EC	

Agents Note: Whilst every care has been taken to prepare these particulars, they are for guidance purposes only. All measurements are approximate and are for general guidance purposes only and whilst every care has been taken to ensure their accuracy, they should not be relied upon and potential buyers/tenants are advised to recheck the measurements

London Bridge  
52 Weston Street  
London  
SE1 3QJ

lettings@feliksaugustine.com  
<http://www.feliksaugustine.com/>

