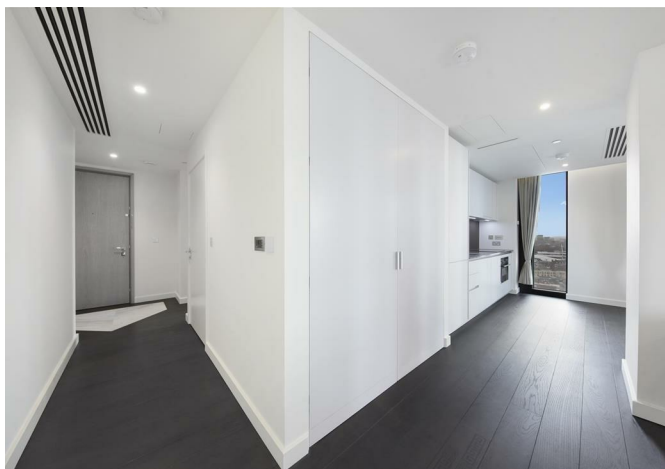
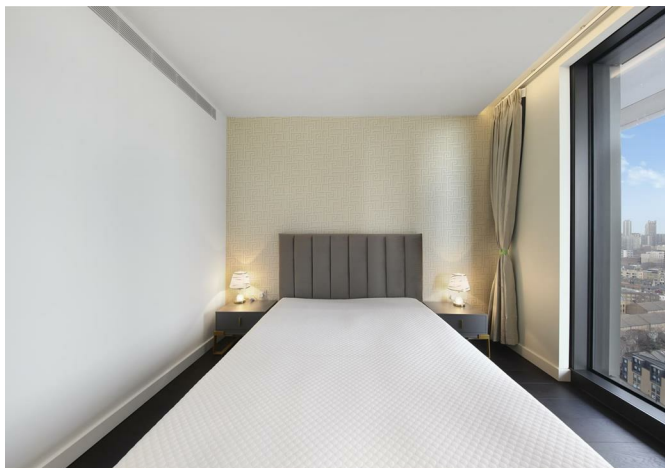




Flat 1705 67 Bondway, London, SW8 1GR  
**£995 Per Week**



## Flat 1705 67 Bondway, London, SW8 1GR

**£995 Per Week**

Nestled in the vibrant heart of London, 67 Bondway presents an exceptional opportunity for those seeking a modern apartment in a prime location.

This property is ideally situated, offering easy access to a plethora of local amenities, including shops, restaurants, and public transport links, making it perfect for both professionals and families alike.

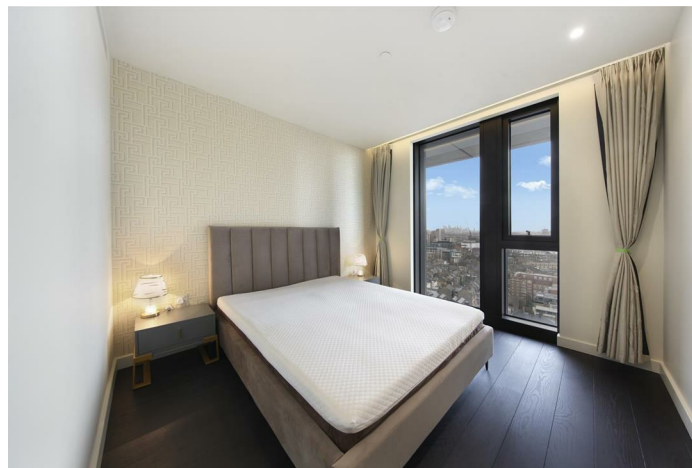
The apartment boasts a contemporary design, ensuring a comfortable and stylish living environment. With its spacious layout, residents can enjoy a sense of openness and light throughout the home. The property is designed to cater to modern living, featuring high-quality finishes and fixtures that enhance the overall aesthetic.

Living in this area means you are never far from the excitement of city life, while also having the option to retreat to the tranquillity of your own space. The surrounding neighbourhood is known for its friendly community atmosphere, making it an inviting place to call home.

## Description

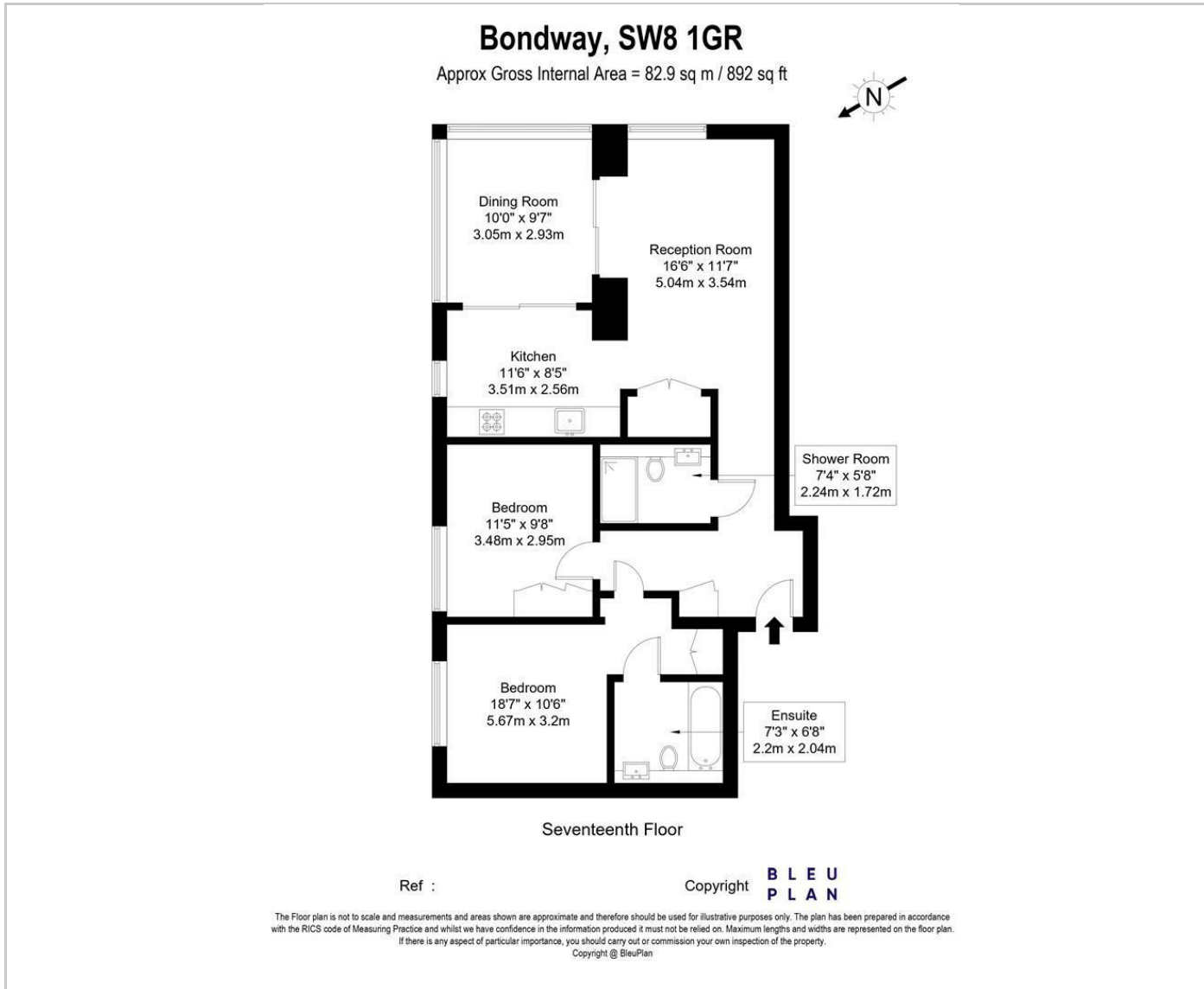


## Situation

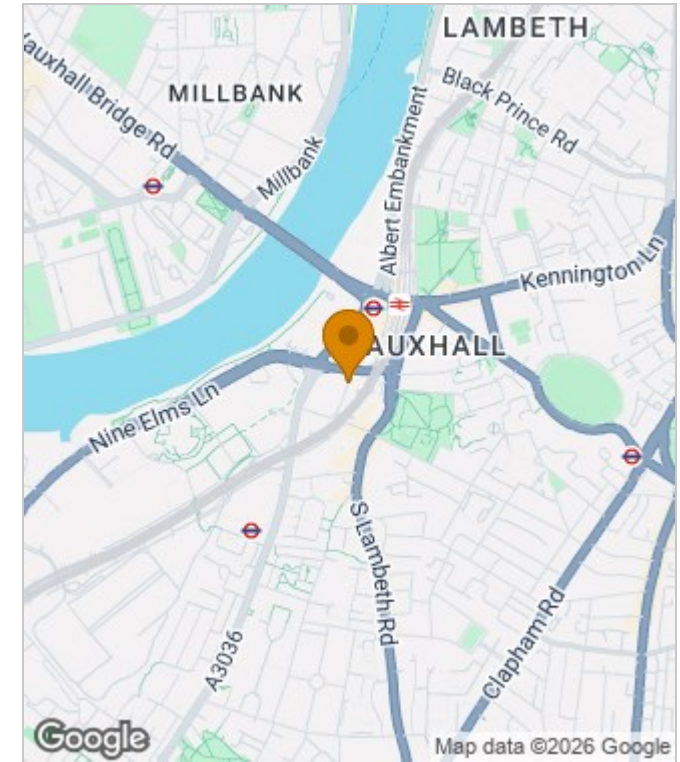


Furnished  
Council Tax Band: New Build  
Available: 25th February 2026

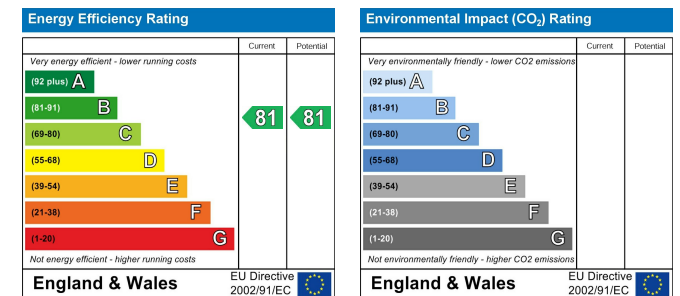
## Floor Plans



## Area Map



## Energy Performance Graph



These particulars, whilst believed to be accurate are set out as a general outline only for guidance and do not constitute any part of an offer or contract. Intending purchasers should not rely on them as statements of representation of fact, but must satisfy themselves by inspection or otherwise as to their accuracy. No person in this firm's employment has the authority to make or give any representation or warranty in respect of the property.