



## The Glebe, SE3

£975,000

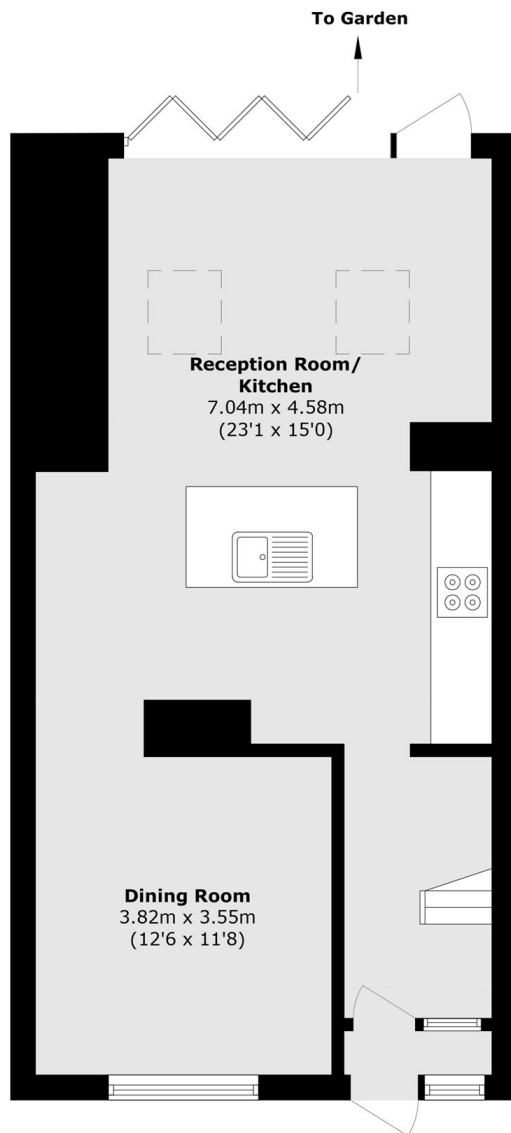
This well-presented post-war three-bedroom house offers modern living with a spacious open-plan kitchen/reception room, separate dining room, and a stylish family bathroom. Finished to a good standard throughout, the home is ready to move into and further benefits from valuable land to the side, providing excellent potential for extension or development (STPP).

Within easy reach of Blackheath Village, Greenwich Park, and excellent transport links.

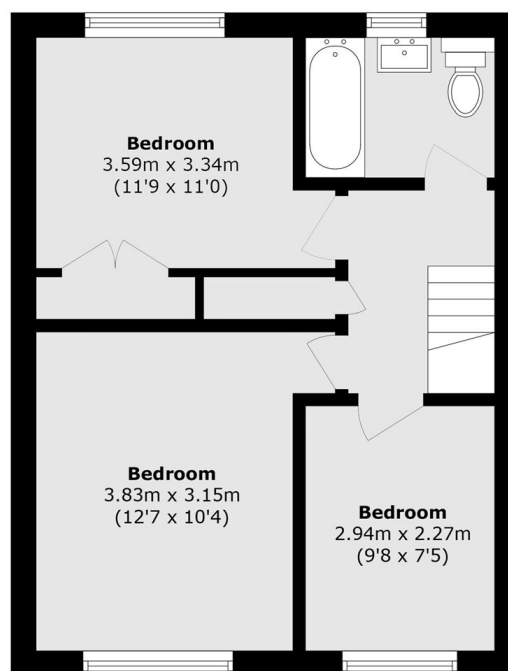
### Features

- Three Bedrooms
- Chain Free
- Modern
- Extended At The Rear
- No Work Required
- Sought After Location

# The Glebe, London, SE3



**Ground Floor**



**First Floor**

Total area (approx.): 100.6 sq. m (1082.8 sq. ft)