



# CONNAUGHT SQUARE

London - W2



**HARWOOD**  
ADVISORY

A comprehensively restored and refurbished Georgian townhouse, set on the prestigious Connaught Square, offering exceptional living across one of London's most sought-after garden squares.



CONNAUGHT  
SQUARE  
Hyde Park - W2





CONNAUGHT  
SQUARE  
Hyde Park - W2

  
**HARWOOD**  
ADVISORY

Occupying a wide footprint on the coveted west side, this Grade II listed home has undergone a meticulous two-and-a-half-year restoration, blending historic character with bespoke craftsmanship and contemporary luxury throughout its 3,534 sq ft.



**HARWOOD**  
ADVISORY

CONNAUGHT  
SQUARE  
Hyde Park - W2

The house provides beautifully proportioned reception rooms alongside refined living spaces, designed to balance grand entertaining with a sense of warmth and intimacy.





CONNAUGHT  
SQUARE  
Hyde Park - W2

  
HARWOOD  
ADVISORY

Elegant period detailing, including intricate crown mouldings and an original working fireplace, sits seamlessly alongside rich, contemporary finishes, creating a home of timeless sophistication.



CONNAUGHT  
SQUARE  
Hyde Park - W2

  
HARWOOD  
ADVISORY

# CONNAUGHT SQUARE

Hyde Park - W2



With views across the private garden square and positioned moments from Hyde Park, Mayfair and Marylebone, this is a rare opportunity to acquire one of Connaught Square's most distinguished residences.



**CONNAUGHT  
SQUARE**  
Hyde Park - W2

### **Key Points**

5 bedrooms | 4 bathrooms | Outside  
Space | Private Study | Close to  
Hyde Park

### **Tenure:**

Freehold

### **Local Authority:**

City of Westminster

### **Council Tax:**

Band H

### **Approx. Gross Internal Area:**

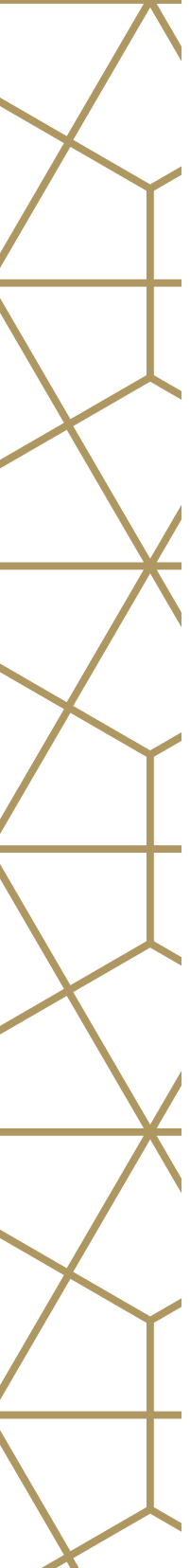
3,454 sqft

### **Guide Price:**

£8,950,000



**HARWOOD**  
ADVISORY



## Connaught Square, W2

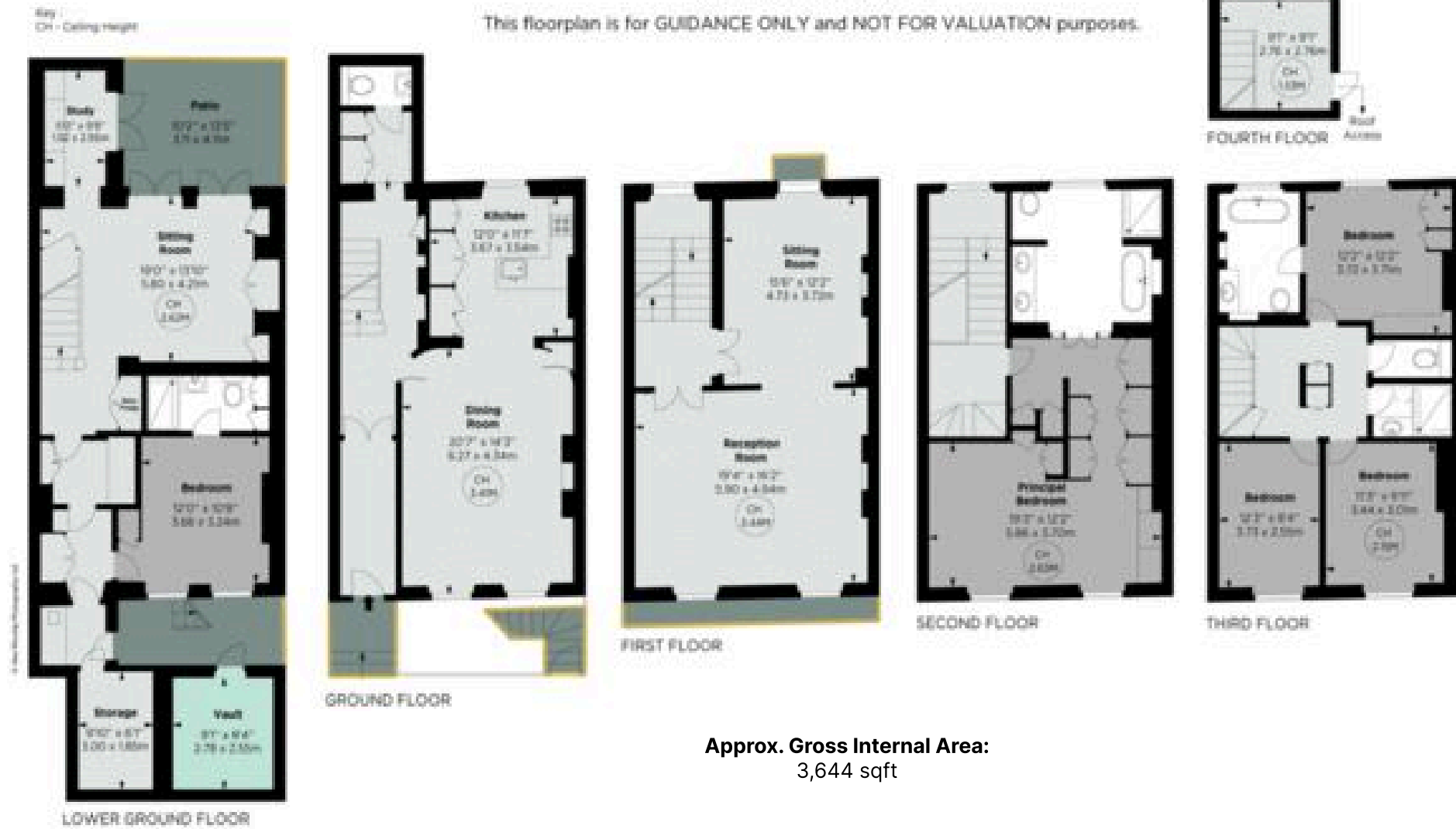
APPROX. GROSS INTERNAL AREA \*  
3454 Sq Ft - 320.88 Sq M  
(Excluding Vault)

APPROX. VAULT AREA \*  
80 Sq Ft - 7.43 Sq M

TOTAL APPROX. GROSS INTERNAL AREA \*  
3534 Sq Ft - 328.31 Sq M



This floorplan is for GUIDANCE ONLY and NOT FOR VALUATION purposes.





CONNAUGHT  
SQUARE  
Hyde Park - W2



Important Notice: 1. These particulars have been prepared in good faith as a general guide, they are not exhaustive and include information provided to us by other parties including the seller, not all of which will have been verified by us. 2. We have not carried out a detailed or structural survey; we have not tested any services, appliances or fittings. Measurements, floor plans, orientation and distances are given as approximate only and should not be relied on. 3. The photographs are not necessarily comprehensive or current, aspects may have changed since the photographs were taken. No assumption should be made that any contents are included in the sale. 4. We have not checked that the property has all necessary planning, building regulation approval, statutory or regulatory permissions or consents. Any reference to any alterations or use of any part of the property does not mean that necessary planning, building regulations, or other consent has been obtained. 5. Prospective purchasers should satisfy themselves by inspection, searches, enquiries, surveys, and professional advice about all relevant aspects of the property. 6. These particulars do not form part of any offer or contract and must not be relied upon as statements or representations of fact; we have no authority to make or give any representation or warranties in relation to the property. If these are required, you should include their terms in any contract between you and the seller.

For more information, contact:

*Sami Robertson*

T: +44 (0) 7748 508 891

E: [sami@harwoodadvisory.com](mailto:sami@harwoodadvisory.com)

*Ollie Blakelock*

T: +44 (0) 7979 692 240

E: [ollie@harwoodadvisory.com](mailto:ollie@harwoodadvisory.com)

*Marc Collier*

T: +44 (0) 7454 726 600

E: [marc@harwoodadvisory.com](mailto:marc@harwoodadvisory.com)



**HARWOOD**  
ADVISORY