

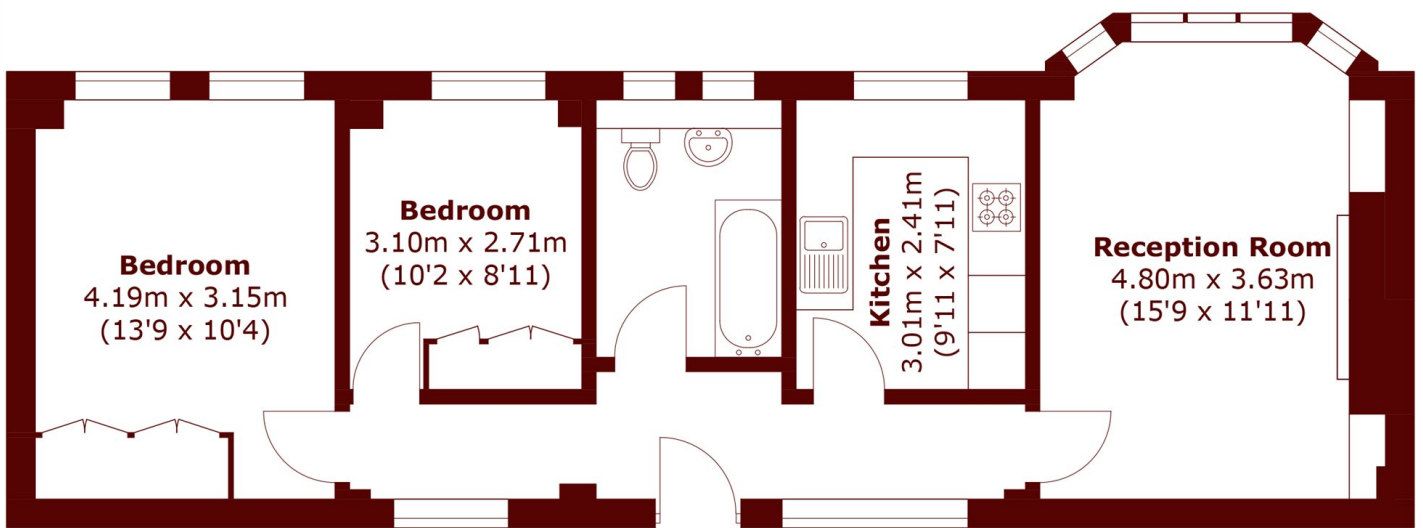


Macaulay Court, SW4

£575,000



- Second floor apartment
- Close to Clapham Common
- In good order throughout
- Communal bike storage
- Hot water included in s/c
- 145 year lease



Second Floor

Total area (approx.): 61.1 sq. m (657.7 sq. ft)

Marsh & Parsons Clapham

28 Old Town, London, SW4

0LB

020 7501 3666