



## CRISP ROAD, W6

£1,000,000

An outstanding three double bedroom, two bathroom first floor apartment within a boutique riverside development and a private balcony. This exceptional flat is finished to exacting standards and benefits from a

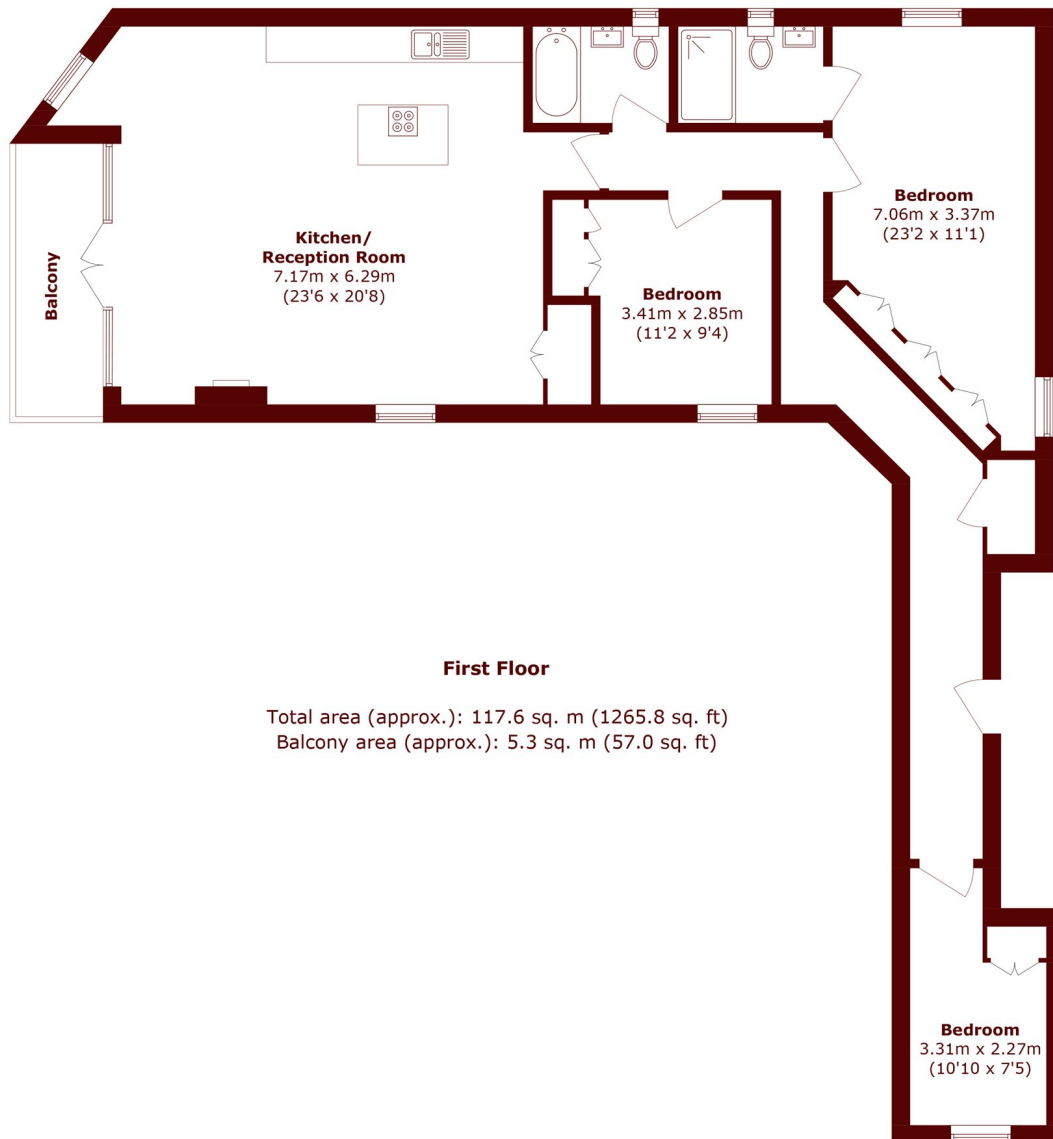
Three double bedrooms

Excellent Transport links

Boutique Riverside Development

Private balcony

# STEP INSIDE CRISP ROAD



**Bishops Park**  
020 7993 9888

Energy Rating: C We aim to make our particulars both accurate and reliable. However, they are not guaranteed; nor do they form part of an offer or contract. If you require clarification on any points then please contact us, especially if you're traveling some distance to view. Please note that appliances and heating systems have not been tested and therefore no warranties can be given as to their good working order

**MARSH &  
PARSONS**