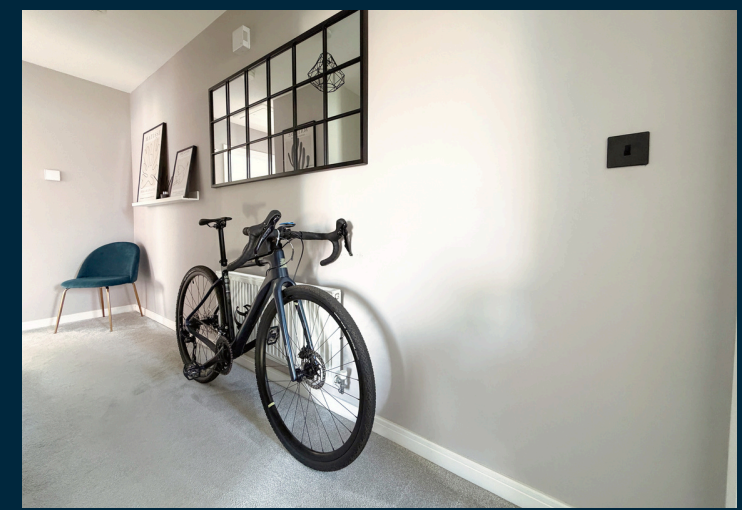




Violette Close

Kings Hill | West Malling | ME19 4UQ





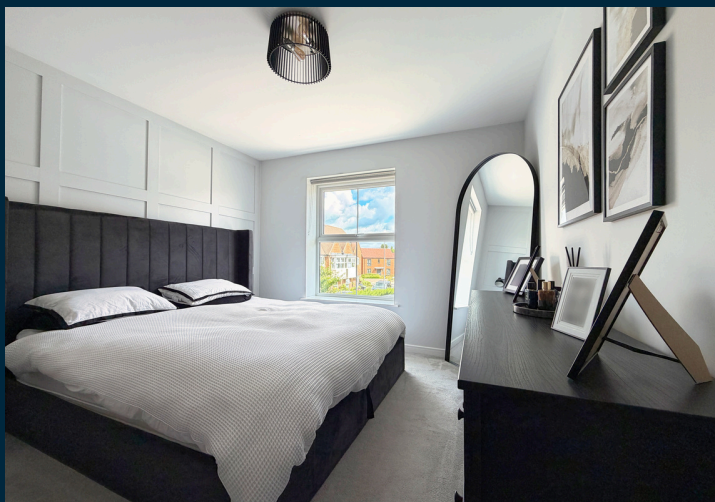
Introducing Violette Close, an exclusive cluster of just three properties forming a quiet, private cul-de-sac.

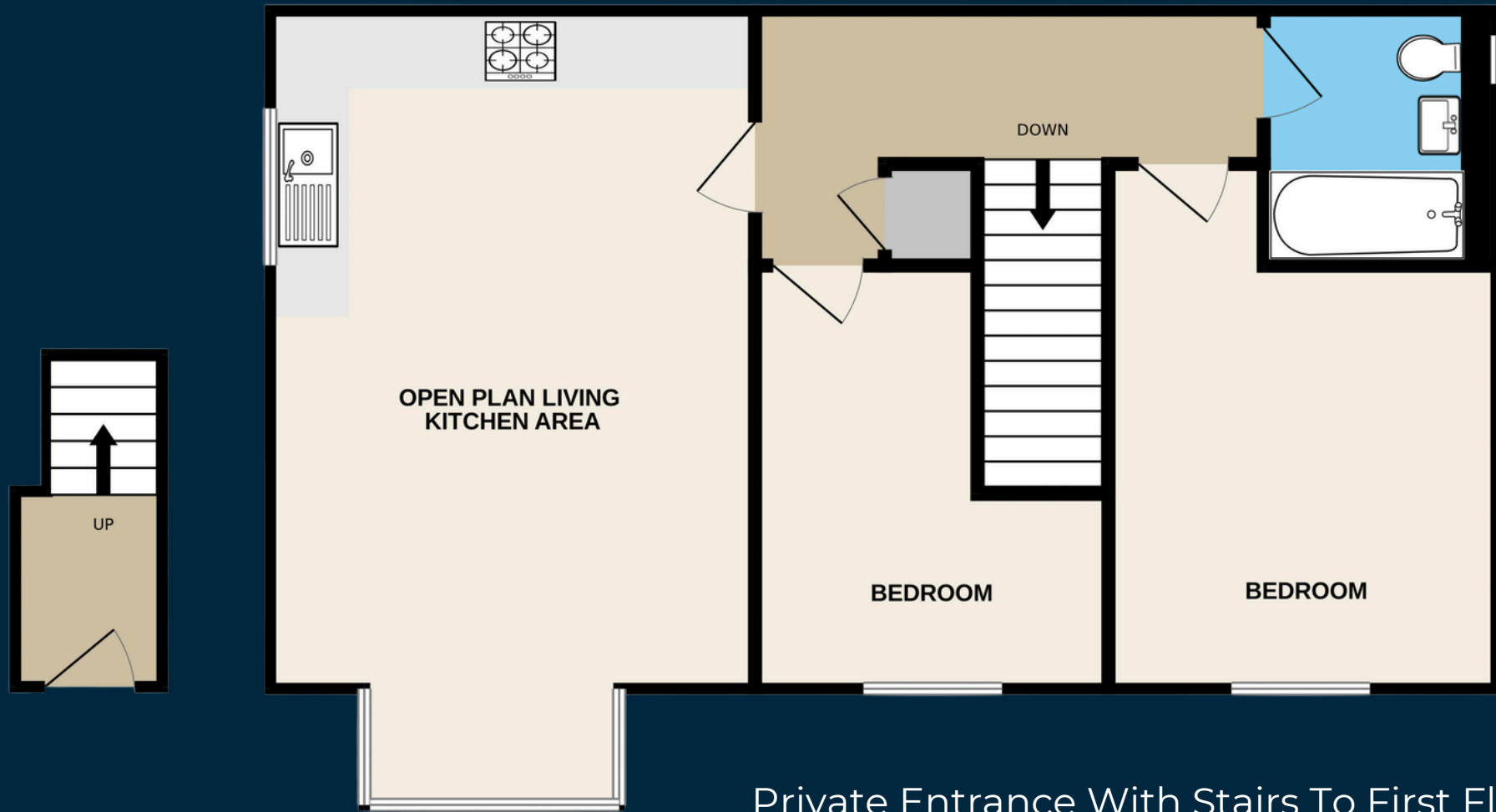
This stunning link-detached Coach House is what we consider a 'turn key property' and was originally one of the developer's show homes, showcasing the very best of their specification and design. Built in 2021, it is offered to the market chain free and with the remainder of its NHBC warranty, providing peace of mind for the next owner.

Occupying the entire first floor, the accommodation feels wonderfully spacious, extending to an impressive 764 sqft (approx). A generous landing sets the tone, leading through to the bright and inviting open-plan living and kitchen area. Modern fitted cabinetry, ample worktop space and the natural flow of the room create a light, airy environment that's ideal for everyday living as well as entertaining.

Both bedrooms are comfortable doubles, offering flexibility for guests, home working or a peaceful principal room. A fresh, contemporary bathroom completes the layout, finishing the home with a clean and modern feel.

For a modern development, the facilities and amenities within Kings Hill are immeasurable and cater for not just the local community but beyond. Sporting and leisure facilities here are superb and include the renowned Kings Hill Golf Club, David Lloyd, Cricket Club and Kings Hill Sports Park to name just a few and for those who love their outdoor space, nearby walks across fields, vineyards and woodland settings are endless. The mainline station of West Malling is only 1.6 miles away and junction 4 of the M20 is accessible in under 3 miles.





Private Entrance With Stairs To First Floor
Landing
Open Plan Living/Kitchen Area - 18'10 x 13'5
Bedroom - 11'9 increasing to 14'11 x 10'9
Bedroom - 11'9 reducing to 5'5 x 9'10 (L Shaped)
Bathroom - 6'8 x 6'3



01732 647009



@sreynoldsrealestate

www.stuartreynolds.expuk.com