



Balladier Walk, London, E14

London

£0



12 Ballardier Walk

London

Positioned on the banks of the Limehouse Cut Canal, this immaculately presented two-storey, three-bedroom house offers approximately 858 sq ft of well-proportioned internal living accommodation, combining contemporary style with a peaceful waterside setting.

- Perched On The Banks Of The Limehouse Cut Canal
- Freehold House
- South Facing Garden
- Three Bedrooms
- Off Street Parking Available
- Chain Free
- Full Frontal Views Of The Canal
- 858 Sq/Ft Internal Living Space



Positioned on the banks of the Limehouse Cut Canal, this immaculately presented two-story, three-bedroom house offers 858 sq ft of well-proportioned internal living accommodation, combining contemporary style with a peaceful waterside setting.

The property features a bright and spacious reception room, a modern fitted kitchen, and three generously sized bedrooms arranged over two floors. Large windows throughout allow for an abundance of natural light, while the thoughtfully designed layout provides both comfortable living and practical functionality.

To the rear, a south-facing private garden offers an ideal space for outdoor dining and entertaining, enjoying sunlight throughout the day. Further benefits include off-street parking, excellent storage, and a desirable canal-side location.

Ideally situated close to local amenities, transport links, and green open spaces, this superb home presents an excellent opportunity for families, professionals, and investors alike seeking a well-connected East London address.

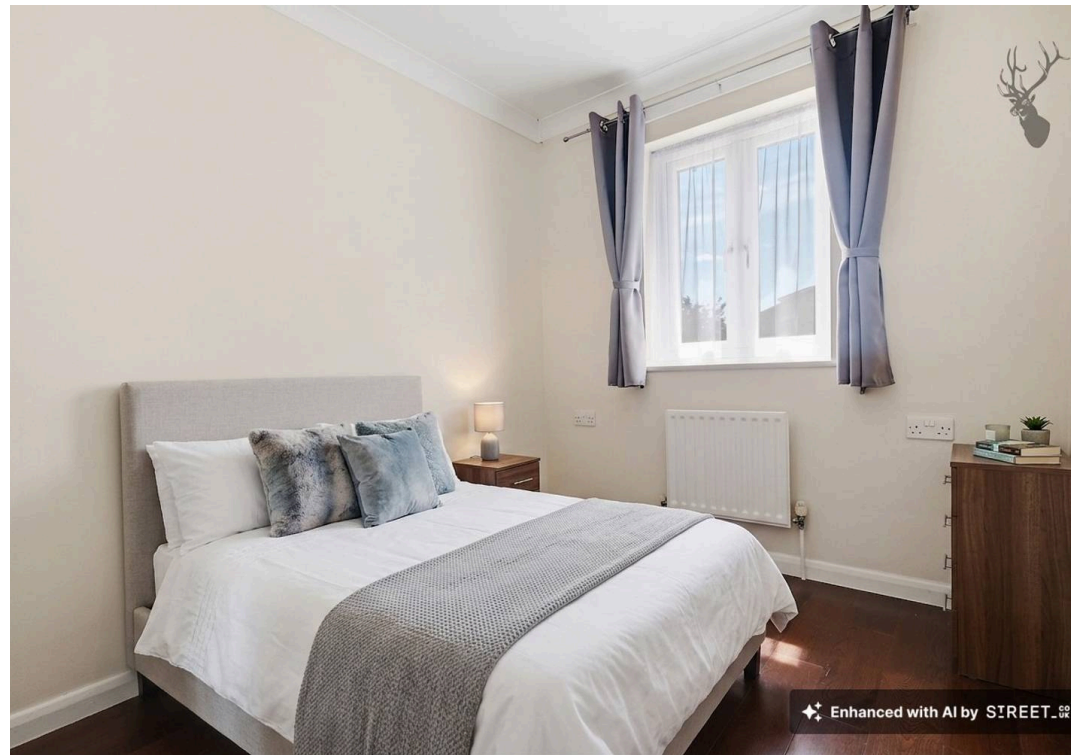
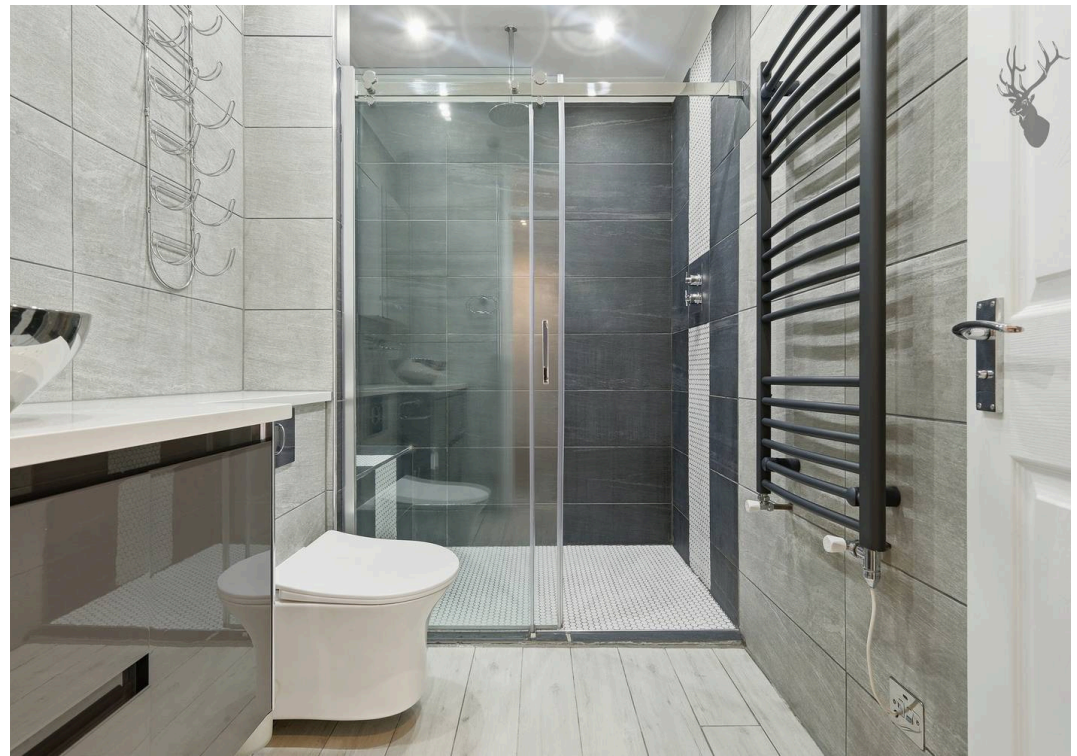
Council Tax band: E

Tenure: Freehold

EPC Energy Efficiency Rating: C

EPC Environmental Impact Rating: C

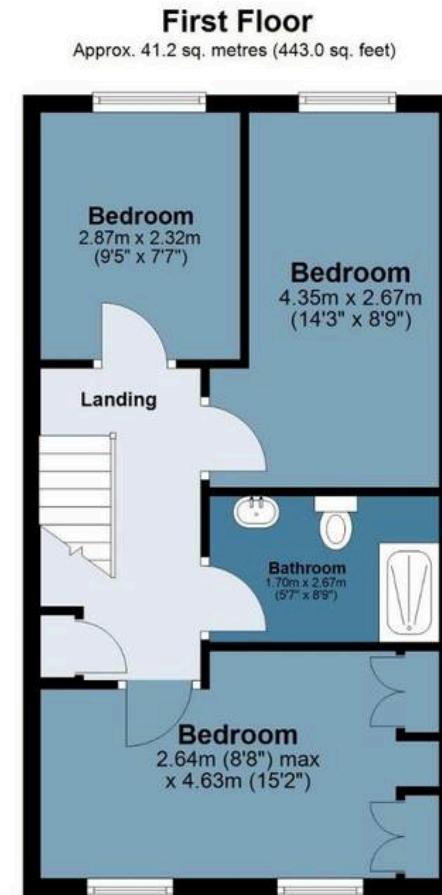






Balladier Walk

Approx. Gross Internal Area 79.8 sq. metres (858.8 sq. feet)



Measurements are approximate and for illustration purposes only. While we do not doubt the accuracy and completeness, we advise you conduct a careful independent assessment of the property to determine monetary value

FROM EAST LONDON ENERGY TO WEST ESSEX EASE

We Make Moving Home Easy.

At Butler and Stag, we do more than just connect London to West Essex – we make the move seamless. With offices spanning from vibrant East London to the tranquillity of West Essex, we understand the nuances of each area and the journey people take between them. Our marketing goes beyond standard listings, showcasing every property with precision, creativity, and reach that others simply can't match. Coupled with an unparalleled attention to detail, from first enquiry to final move-in, we ensure every client and customer feels informed, supported, and confident. Simply put, we do the little things that make a big difference, setting us apart in every step of the property experience.



LONDON STRATFORD SOUTH WOODFORD BUCKHURST HILL LOUGHTON EPPING BEYOND

Like what you see? Let's talk

Book your **FREE** valuation now



020 8102 1236

london@butlerandstag.com

508 Roman Road, Bow, London, E3 5LU

butlerandstag.uk

IMPORTANT NOTICE - These particulars have been prepared in good faith and they are not intended to constitute part of an offer or contract. We have not performed a structural survey on this property and the services, appliances and specific fittings have not been tested. All photographs, measurements, floor plans and distances referred to are given as a guide and should not be relied upon.

BUTLER & STAG

