



Orchard Garth
Beverley

Guide Price £425,000 – £450,000

WIGWAM

- 3 Bedroom detached bungalow
- Expansive garden with summer house, hot tub, and motorised retractable shade
- Fully renovated home
- Newly installed bathroom with walk in shower and bath
- High spec kitchen with Miele appliances and Quartz worktop
- Large double garage with electric roller shutter door
- EV charger

Beautifully presented and fully renovated, this exceptional three-bedroom detached bungalow offers a rare blend of contemporary luxury and every-day comfort, set in a sought-after residential location.

The property welcomes you with a sense of space and light, featuring a thoughtfully designed layout that flows seamlessly from room to room.

The heart of the home is the high specification kitchen, appointed with premium integrated Miele appliances, a stunning Quartz worktop, and ample storage, making it a dream for keen cooks and entertainers alike.

The spacious living room is perfect for both relaxing evenings and lively gatherings, featuring bi-fold doors to the expansive garden, Somfy motorised blinds, and even air-conditioning.



While the three generously sized bedrooms provide peace and privacy for the whole family, with the primary bedroom benefitting from built in wardrobes.

The newly installed bathroom is finished to a high standard, boasting a walk-in shower and a separate bath, offering a touch of spa-like luxury.

Outside, the property truly excels, offering expansive wrap-around gardens that deliver a sense of tranquillity and outdoor living at its finest. The beautifully landscaped garden features a large decked area, covered by a stylish pergola with a motorised retractable electric roof and integrated screens, providing the perfect setting for al fresco dining or relaxing in all weather conditions. The hot tub, complete with shelter and steps, invites you to unwind in total privacy, while the charming summer house offers a versatile space for hobbies, a home office, or simply a quiet retreat. Practicality is well catered for, with a storage shed and a paved area for easy maintenance.

The large double garage, accessed via an electric shutter door, and the generous driveway at the front of the property provide ample parking for multiple vehicles, as well as convenient EV charging.

Combining high-end finishes with outstanding outdoor amenities, this bungalow offers a unique opportunity for those seeking a stylish, move-in ready home with exceptional space both inside and out.





Kitchen

With tiled floor, handleless kitchen units, quartz worktops, integrated Miele appliances of induction hob, oven, dishwasher, extractor, 1.5 bowl sink and tap, window, French doors to rear garden, and radiator.

Living room

With carpet, electric fire, bi-fold doors to decking in garden, Somfy motorised blinds in cassette, radiator, and window

Bathroom

With tiled floor and walls, walk in shower cubicle, bath, wash basin on vanity unit, toilet, towel radiator, extractor fan, and window.

Bedroom 1

With carpet, built in wardrobes, air conditioning unit, radiator, and window.

w/c

With tiled floor and half tiled wall, toilet, wash basin on vanity unit, towel radiator, and window

Bedroom 2

With carpet, air conditioning unit, radiator, and window.

Bedroom 3

With carpet, radiator, and window.

Garden

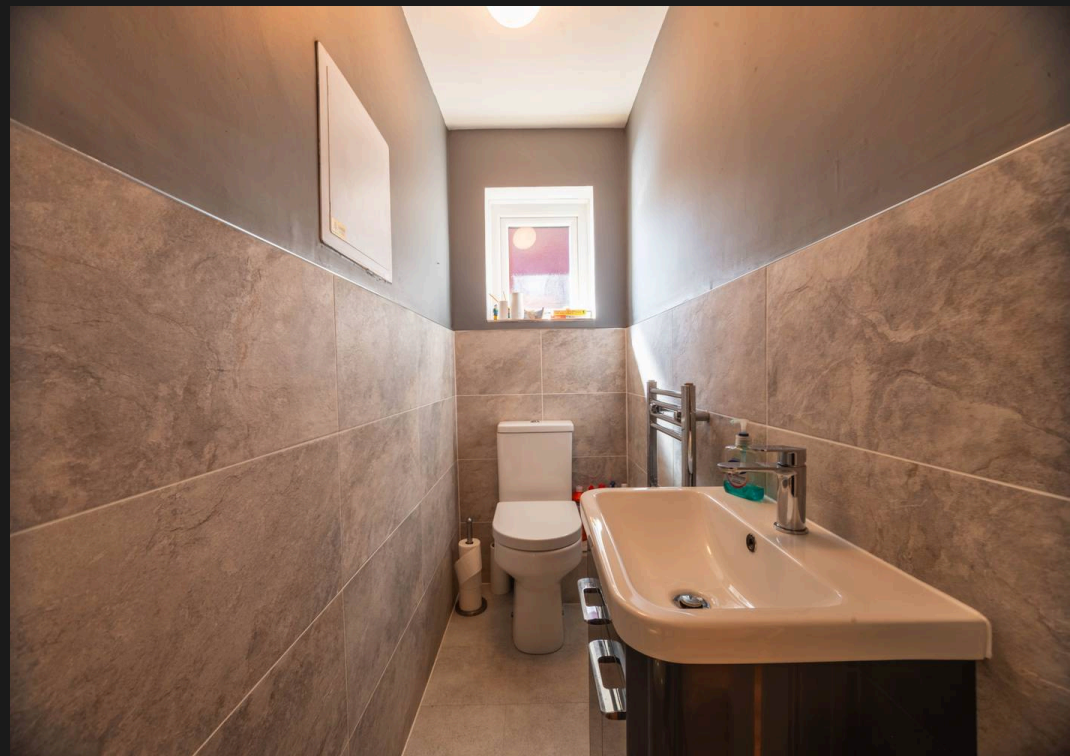
Large wrap around garden with summer house, large decked area covered by a pergola with retractable electric roof and screens with integrated drainage, hot tub with shelter and steps, storage shed, and paved area.

Driveway and Garage

Driveway in front of the property with space for multiple vehicles, with EV charger. Also benefits from a large double garage with plumbing and electric shutter door.

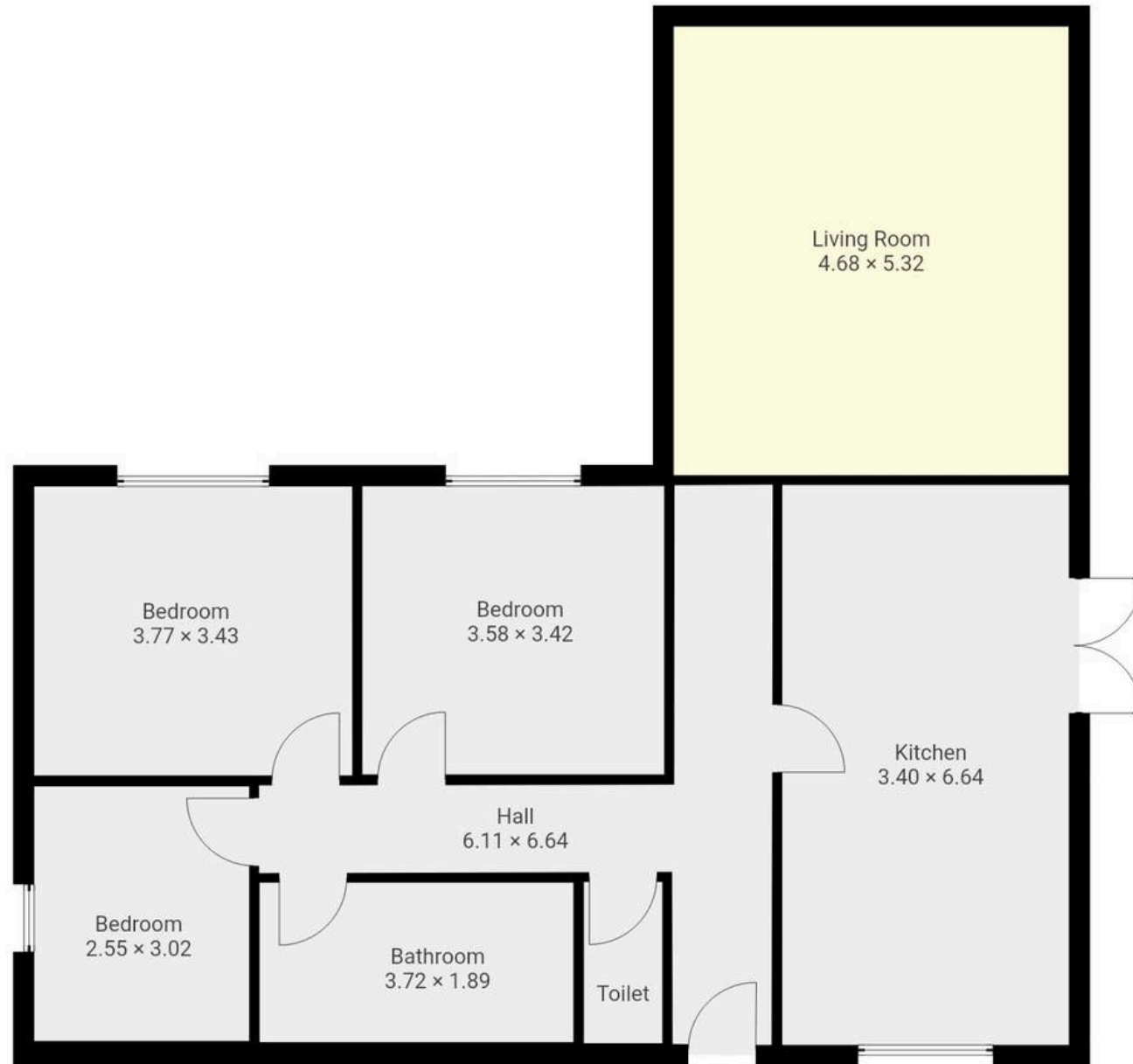












This floor plan is provided without warranty of any kind. All measures have been taken to ensure quality and accuracy, however we disclaim any warranty including, without limitation, satisfactory quality or accuracy of dimensions.



Wigwam

Block A, Unit 7B, Flemingate, Beverley - HU17 0NQ

01482505152 • hello@wigwamhomes.co.uk • www.wigwamhomes.co.uk